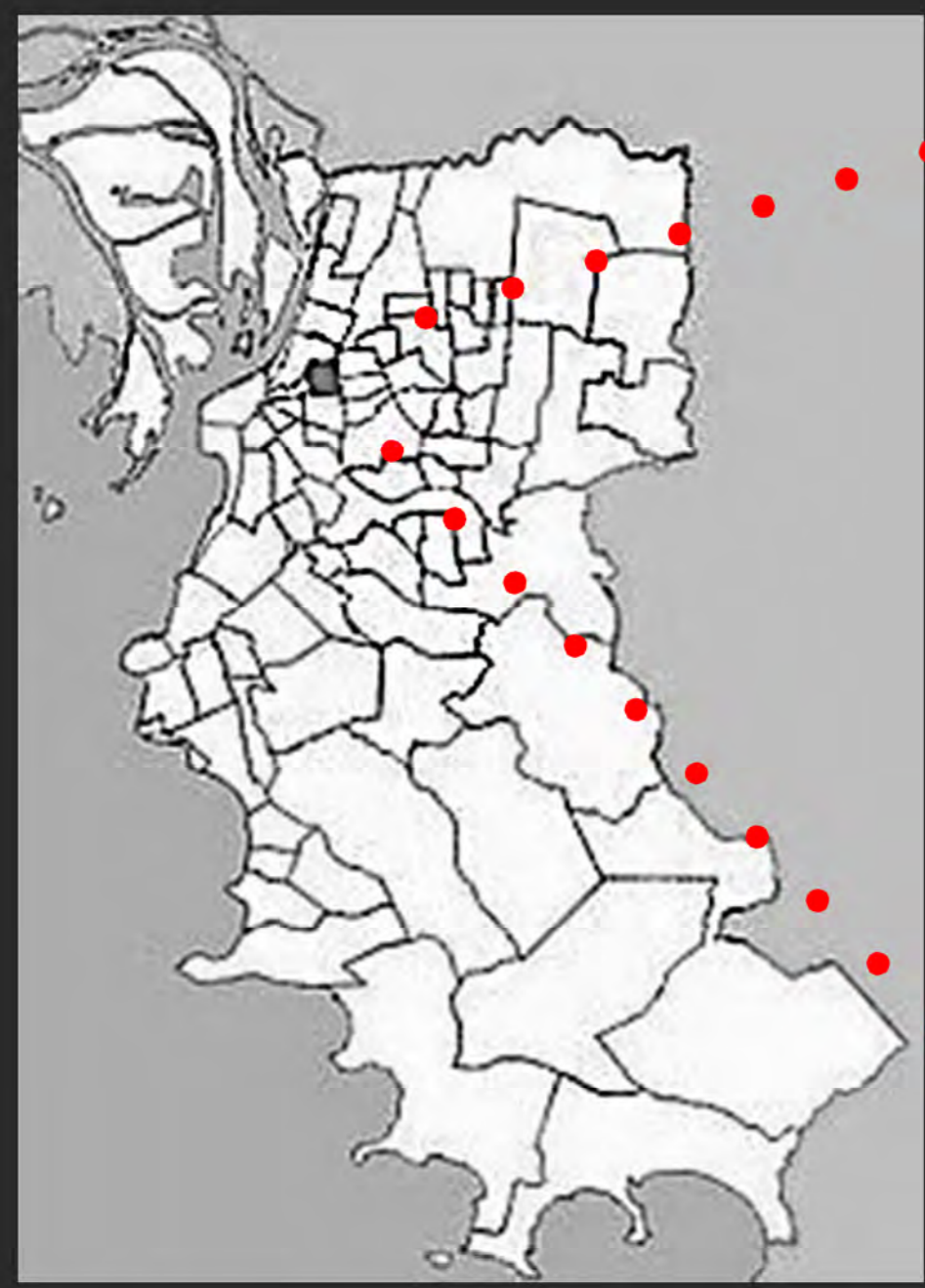


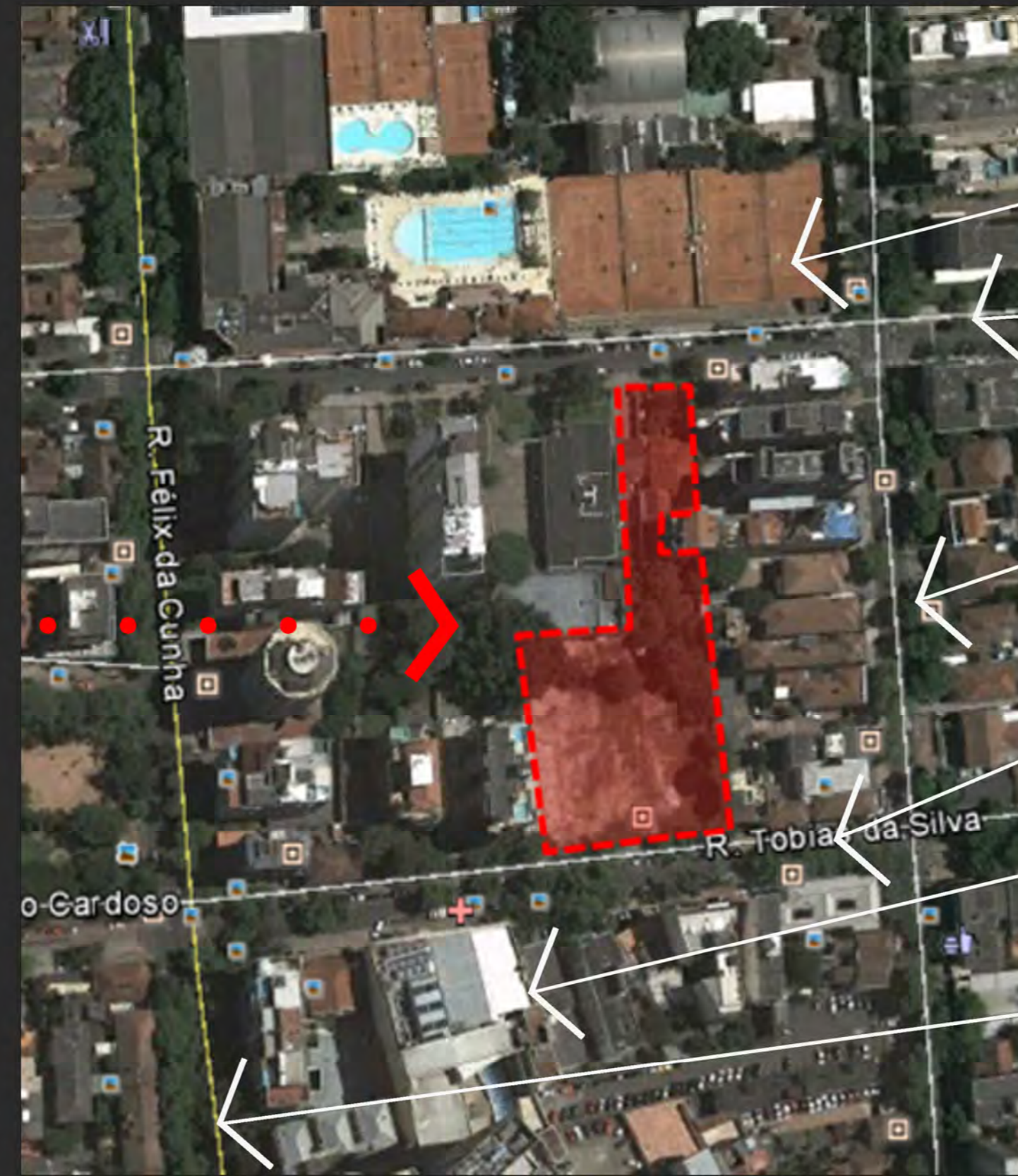
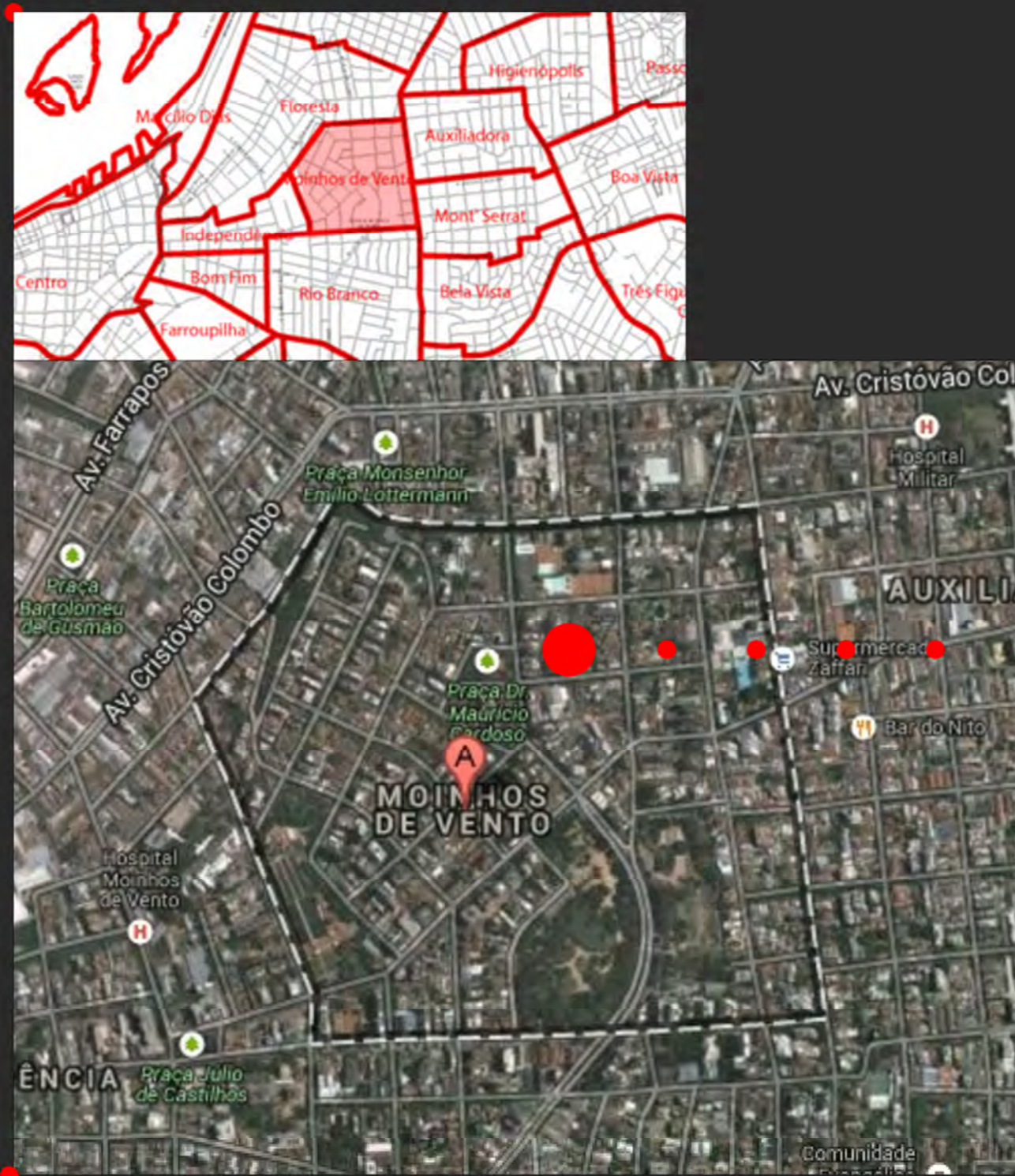
# APART-HOTEL PARA 3ª IDADE

+ SERVIÇOS E COMÉRCIO

## • O terreno



PORTO ALEGRE-RIO GRANDE DO SUL



ASSOCIAÇÃO LEOPOLDINA JUVENIL

RUA MARQUES DO HERVAL

RUA DR. TIMÓTEO

RUA TOBIAS DA SILVA

MOINHOS SHOPPING

RUA FÉLIX DA CUNHA

## • Imagens

Imagens da Rua Tobias da Silva:



Edifício vizinho



Edifício que está sendo construído no sítio escolhido



Tipologia do entorno



Vista do fim da taestada do terreno e da rua



Imagens da Rua Marquês do Herval



Testada dos lotes escolhidos para construção do projeto



Vista na direção da Rua Félix da Cunha



Vista na direção da Rua Dr. Timóteo



## • Perspectiva





# • Condicionantes

# • Evolução do partido

## DO TERRENO



- LEGENDA:**
1. PARQUE MOINHOS DE VENTO
  2. MOINHOS SHOPPING/ SHERATON HOTEL
  3. ASSOCIAÇÃO LEOPOLDINA JUVENIL
  4. HOSPITAL MOINHOS DE VENTO
  5. SHOPPING TOTAL
  6. GOETHE INSTITUT
  7. HIDRAULICA MOINHOS DE VENTO
  8. PARQUE TENISTICO JOSÉ MONTAURY
  9. BANCO DO BRASIL
  10. BANCO HSBC
  11. PRAÇA DR. MAURÍCIO CARDOSO
  12. HOTEL IBIS
  13. GRÊMIO NÁUTICO UNIÃO
  14. SUPERMERCADO ZAFFARI DA RUA CORONEL BORDINI

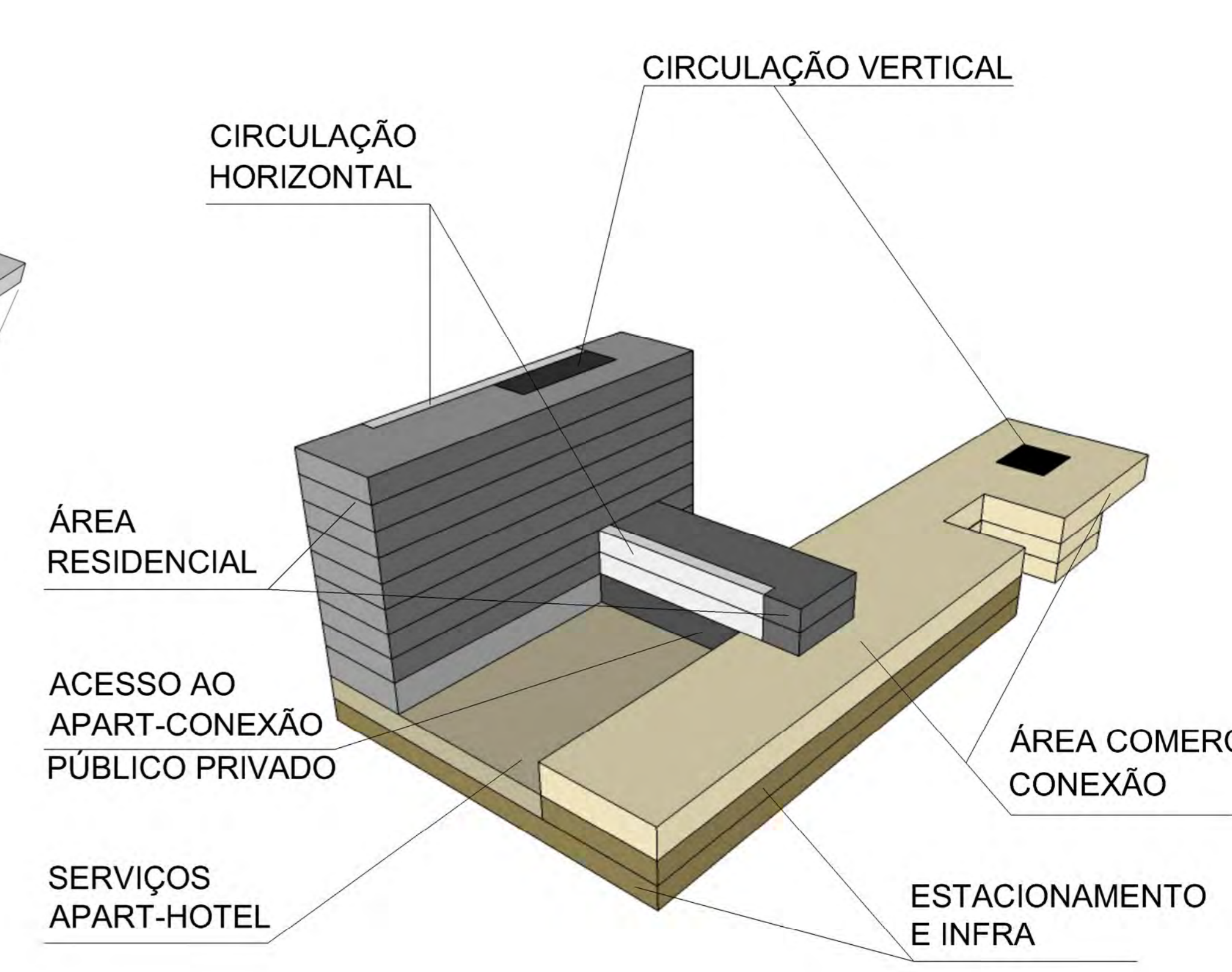
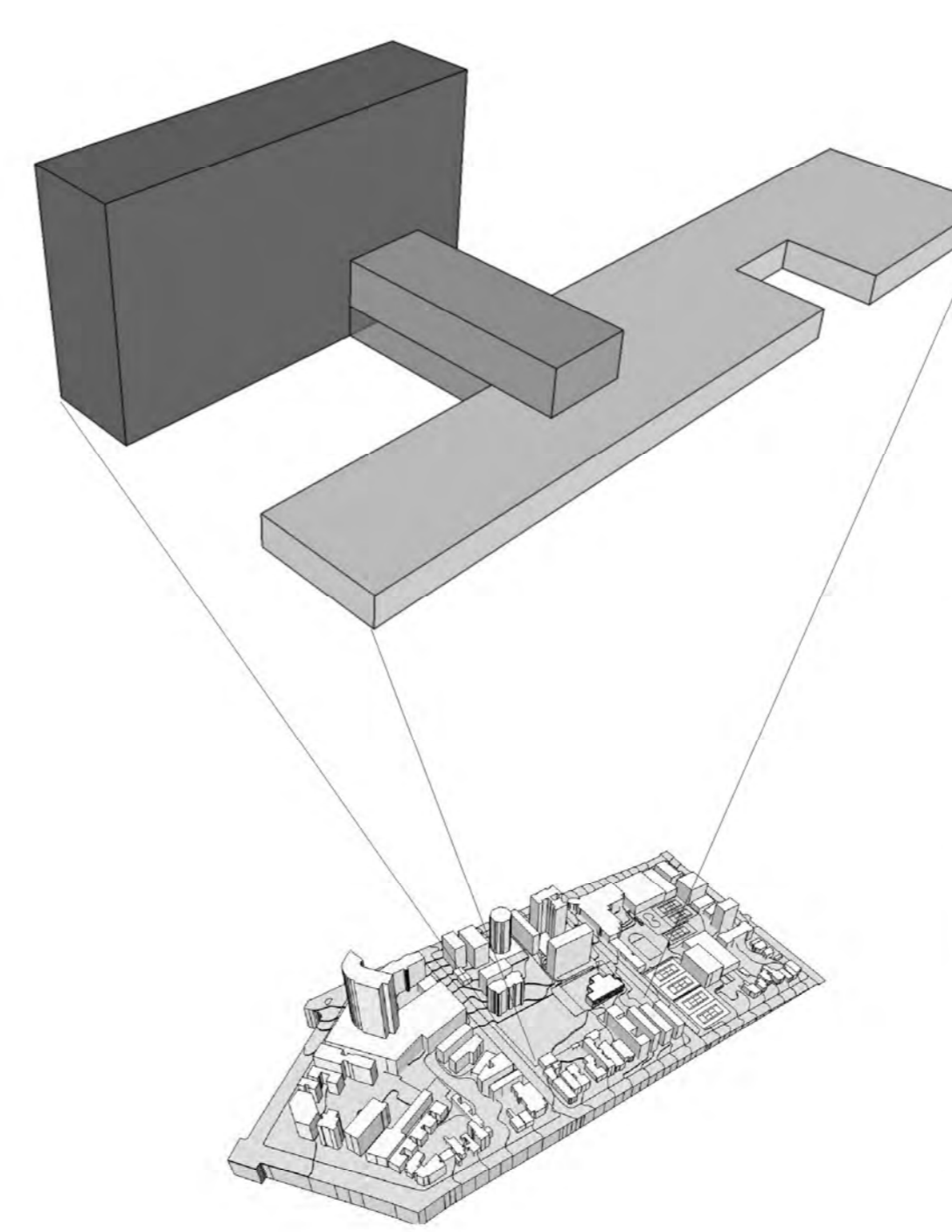
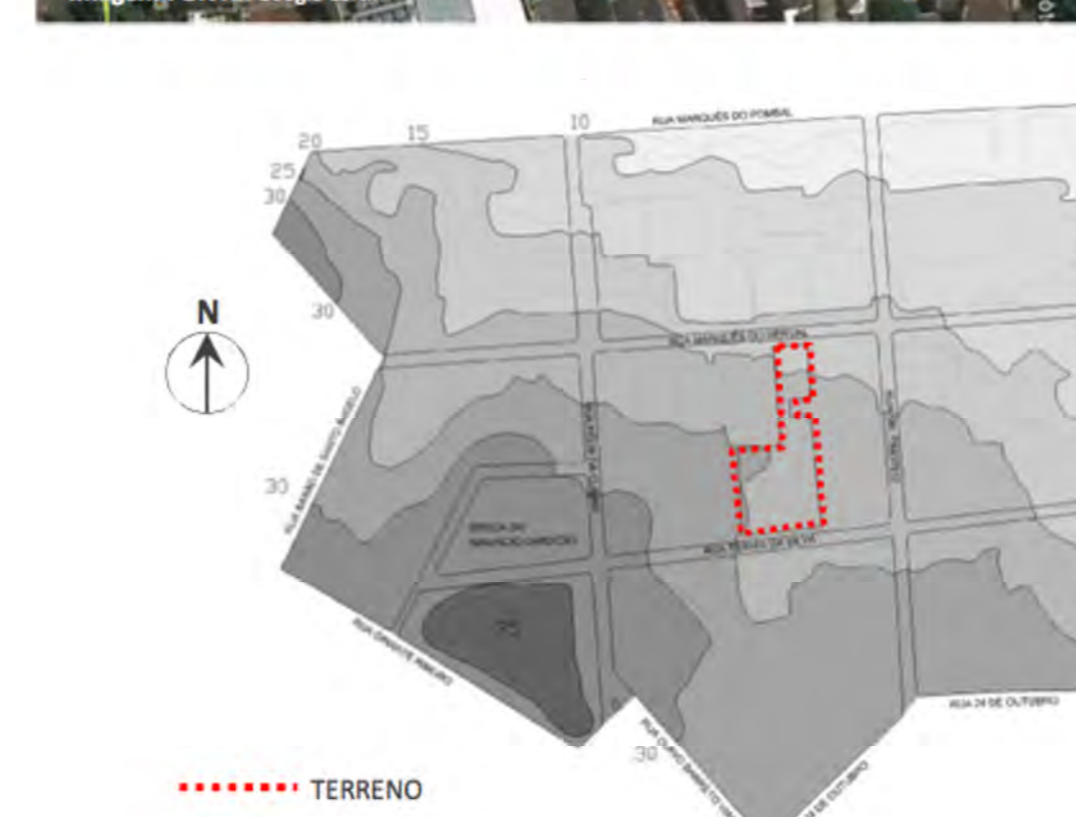


- LEGENDA:**
- RUA 24 DE OUTUBRO
  - RUA PADRE CHAGAS
  - AV. CRISTÓVÃO COELHO
  - RUA FÉLIX DA CUNHA
  - AV. GOETHE
  - TERRENO

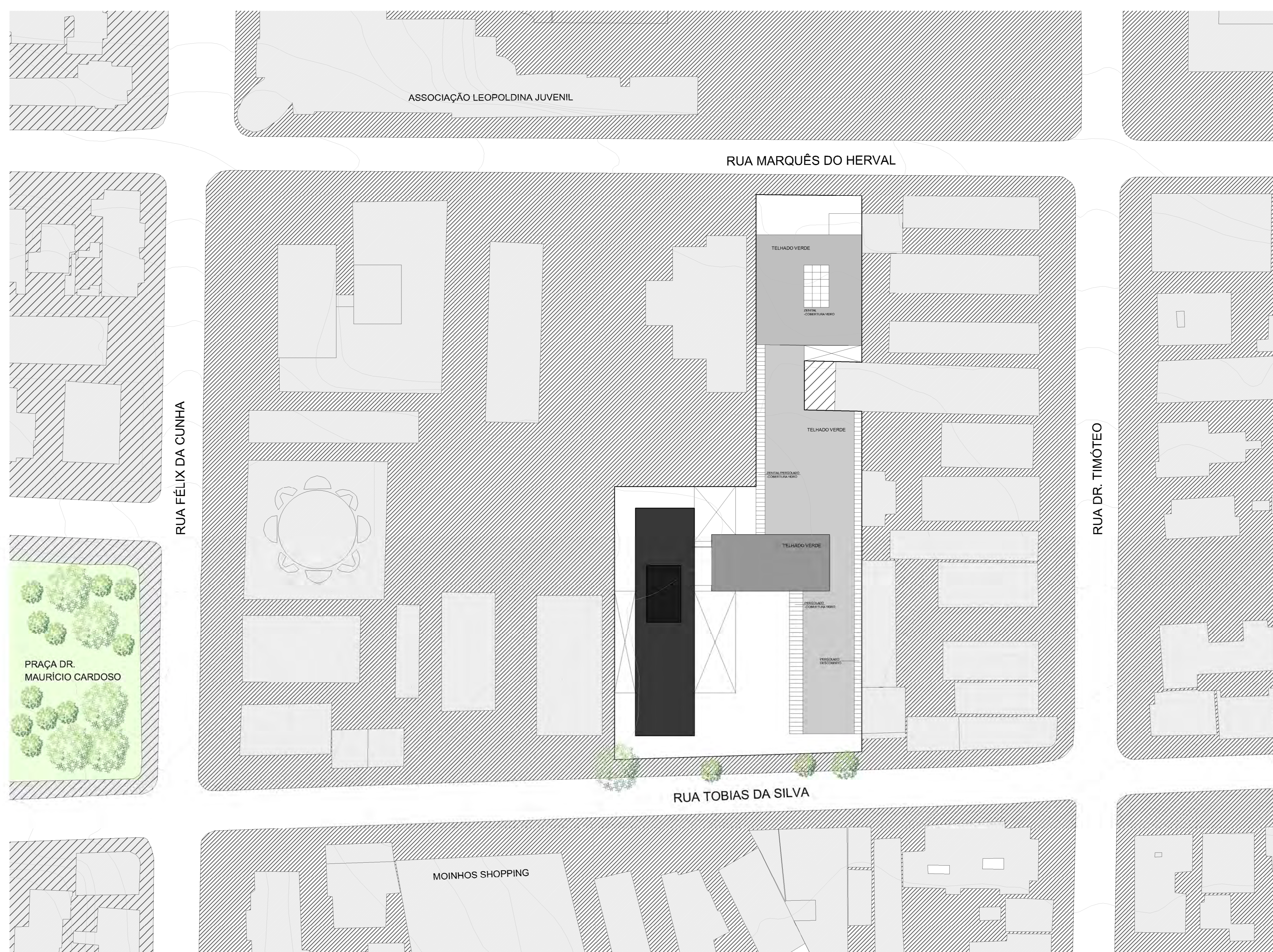
## DO PROJETO



- LEGENDA:**
1. CAMINHO DO SOL
  2. RUIDOS E POLUIÇÃO
  3. DIREÇÃO DOS VENTOS NO VERÃO
  4. DIREÇÃO DOS VENTOS NO INVERNO

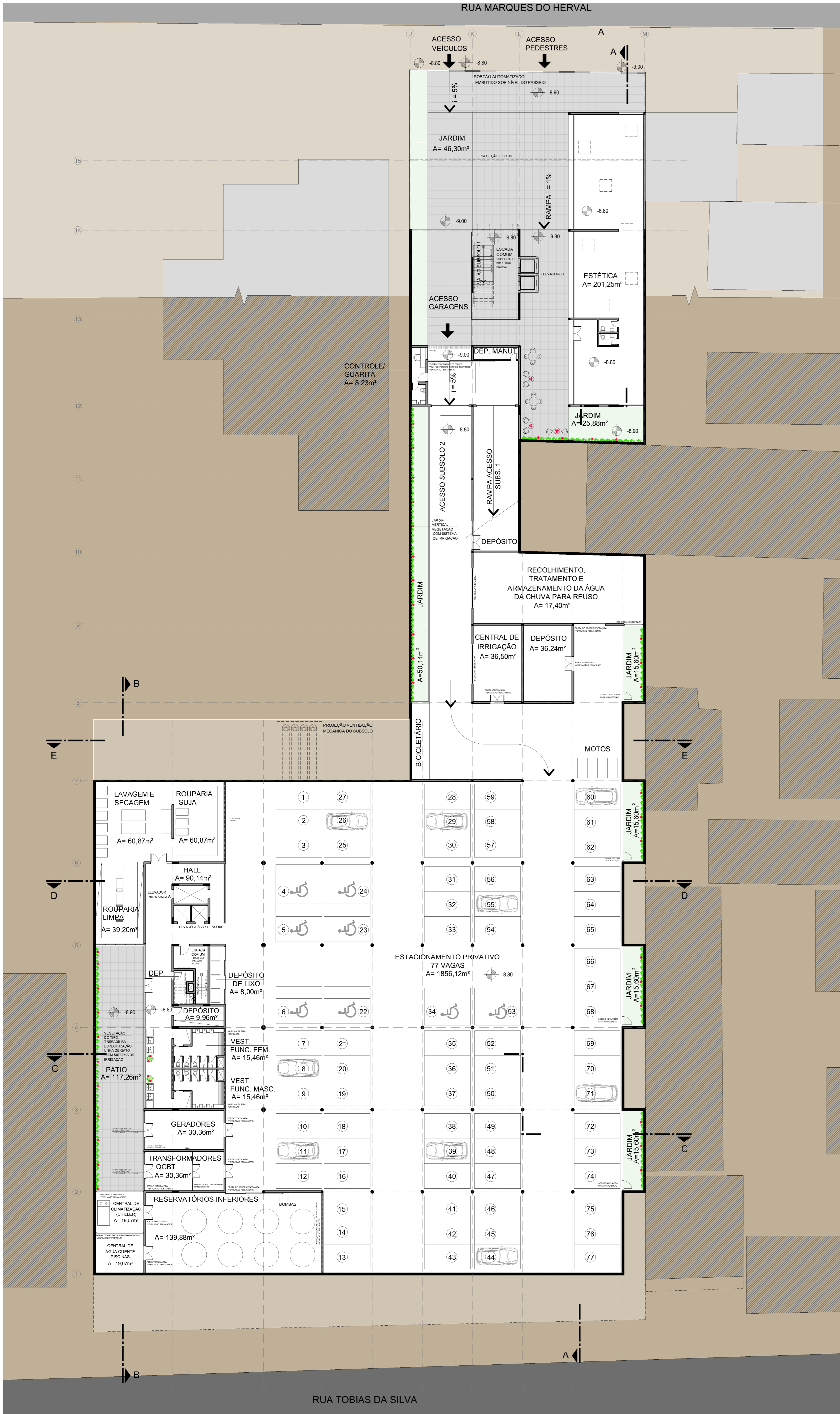


# • Implantação 1.500

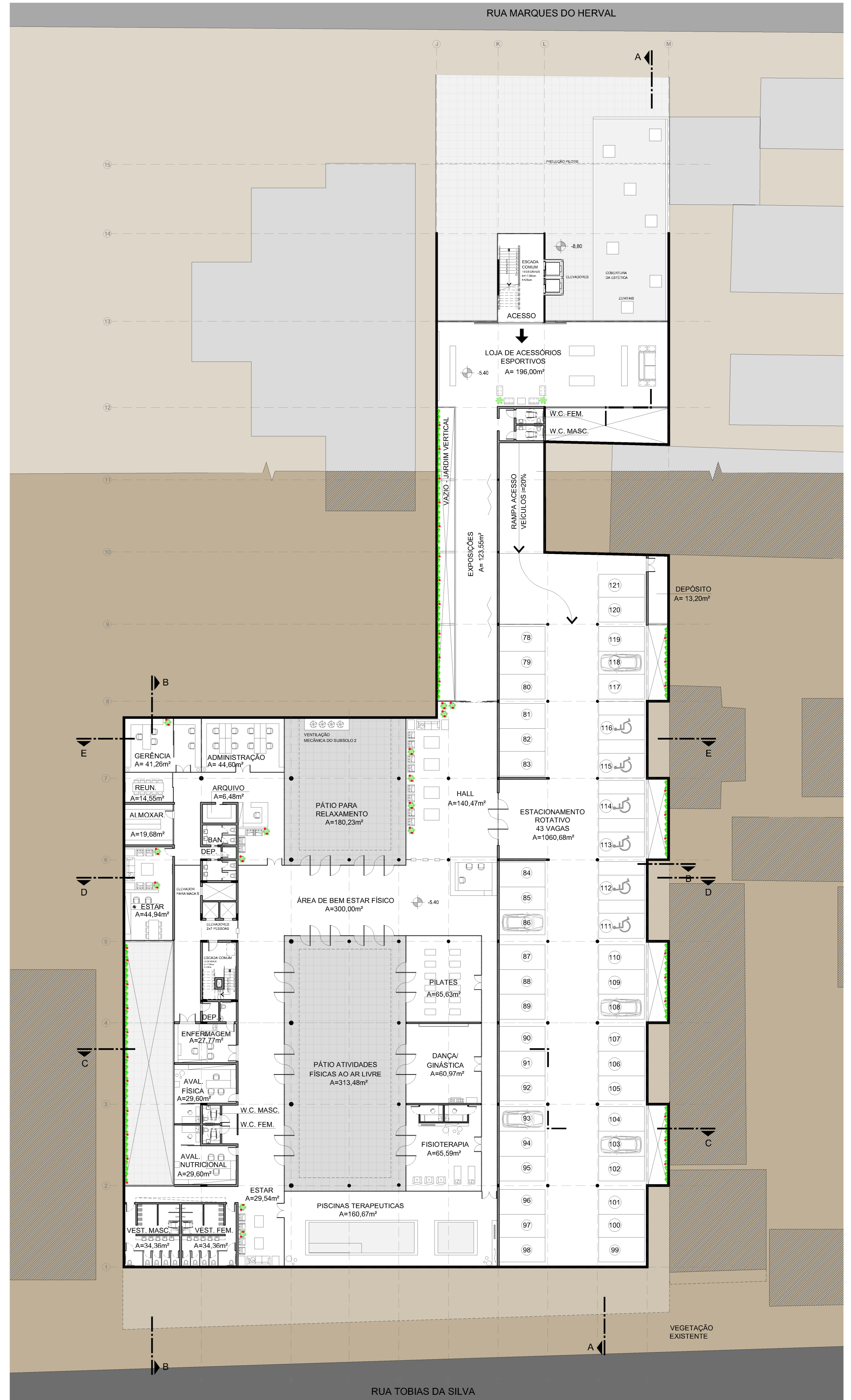




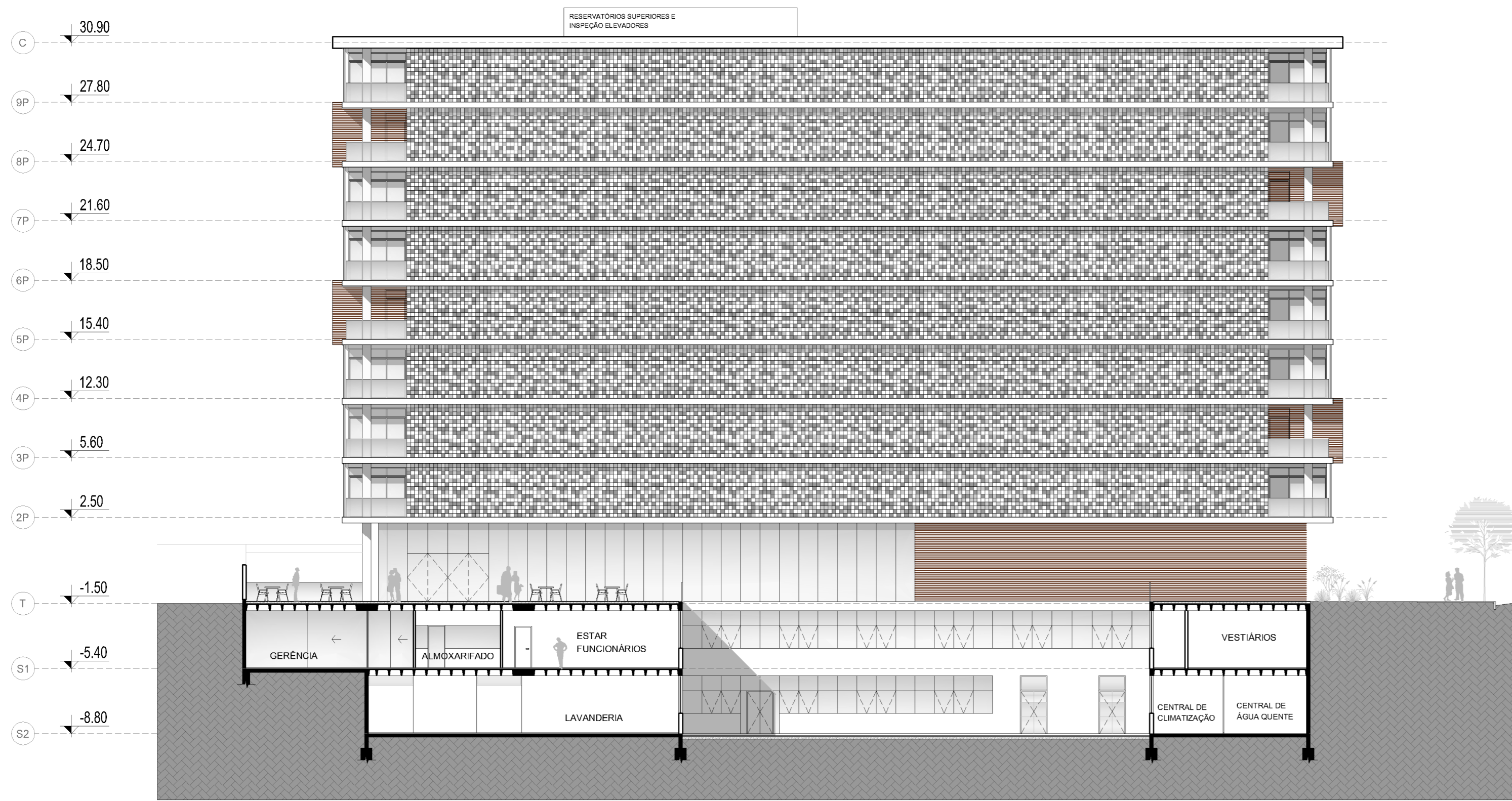
• **Subsolo 2**  
1.200



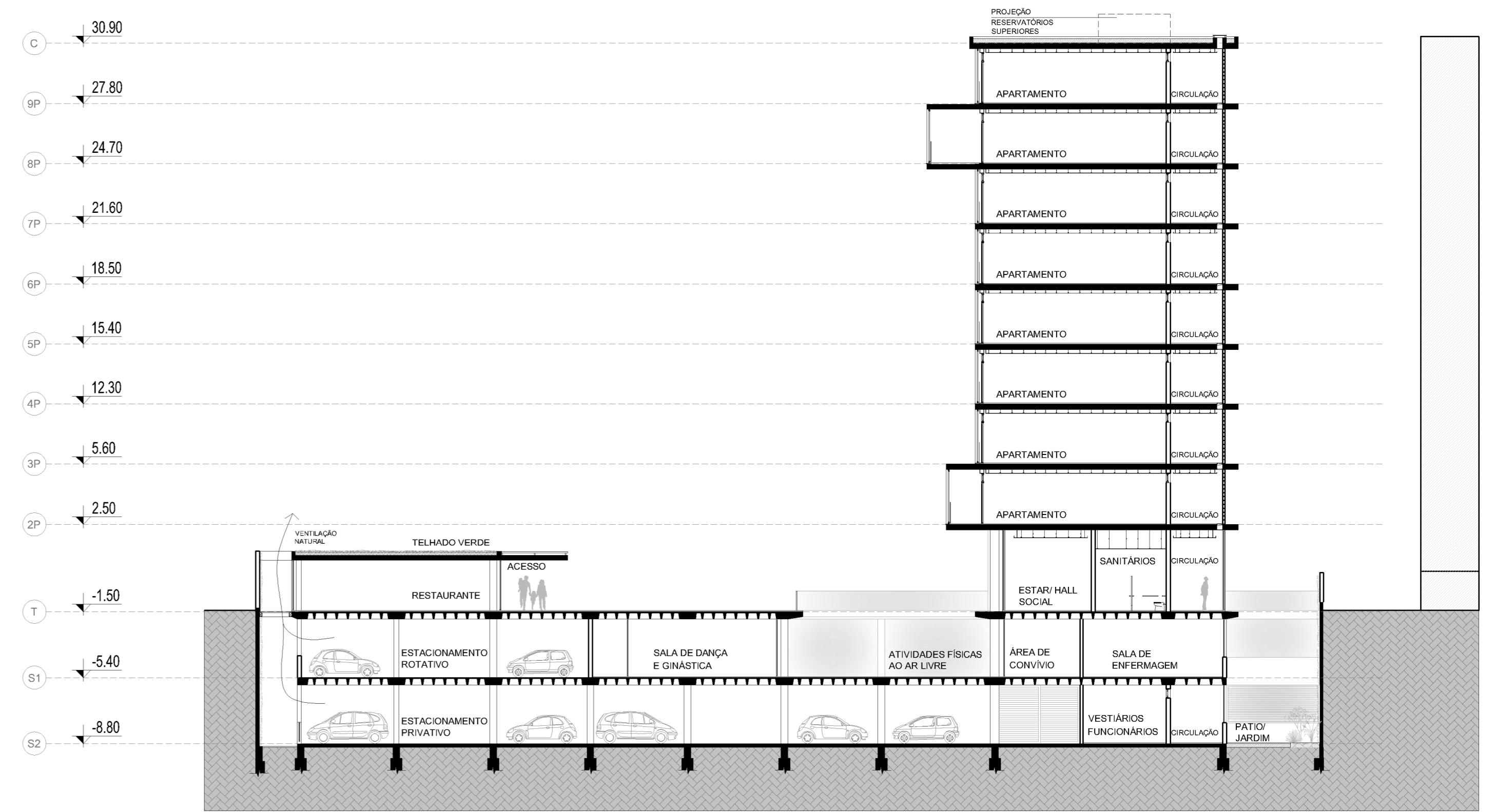
• **Subsolo 1**  
1.200



• **Corte BB**  
1.200



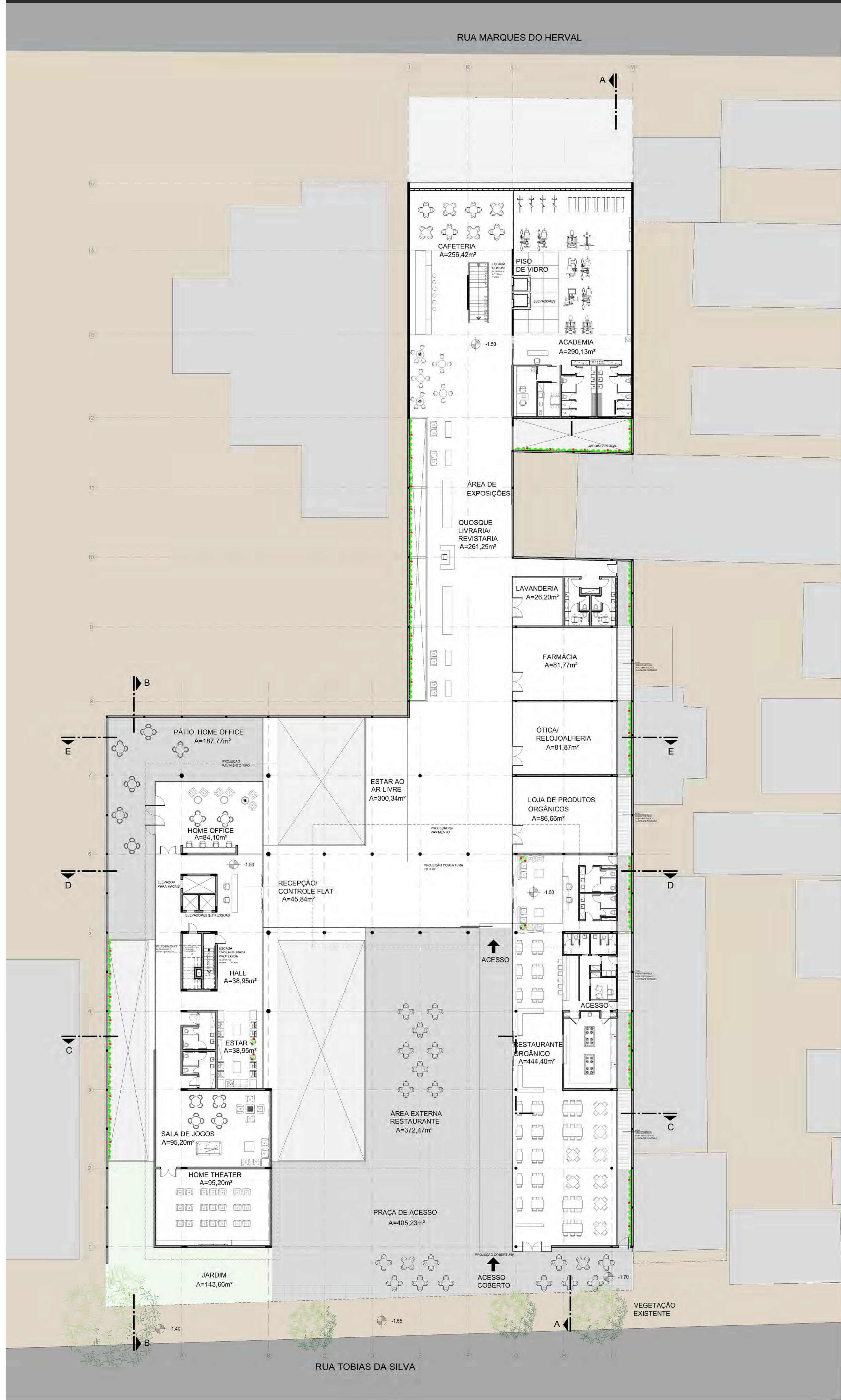
• **Corte CC**  
1.200



• **Corte AA**  
1.200







• Planta 2º pavimento



• Planta 4º pavimento



• Planta 3º pavimento



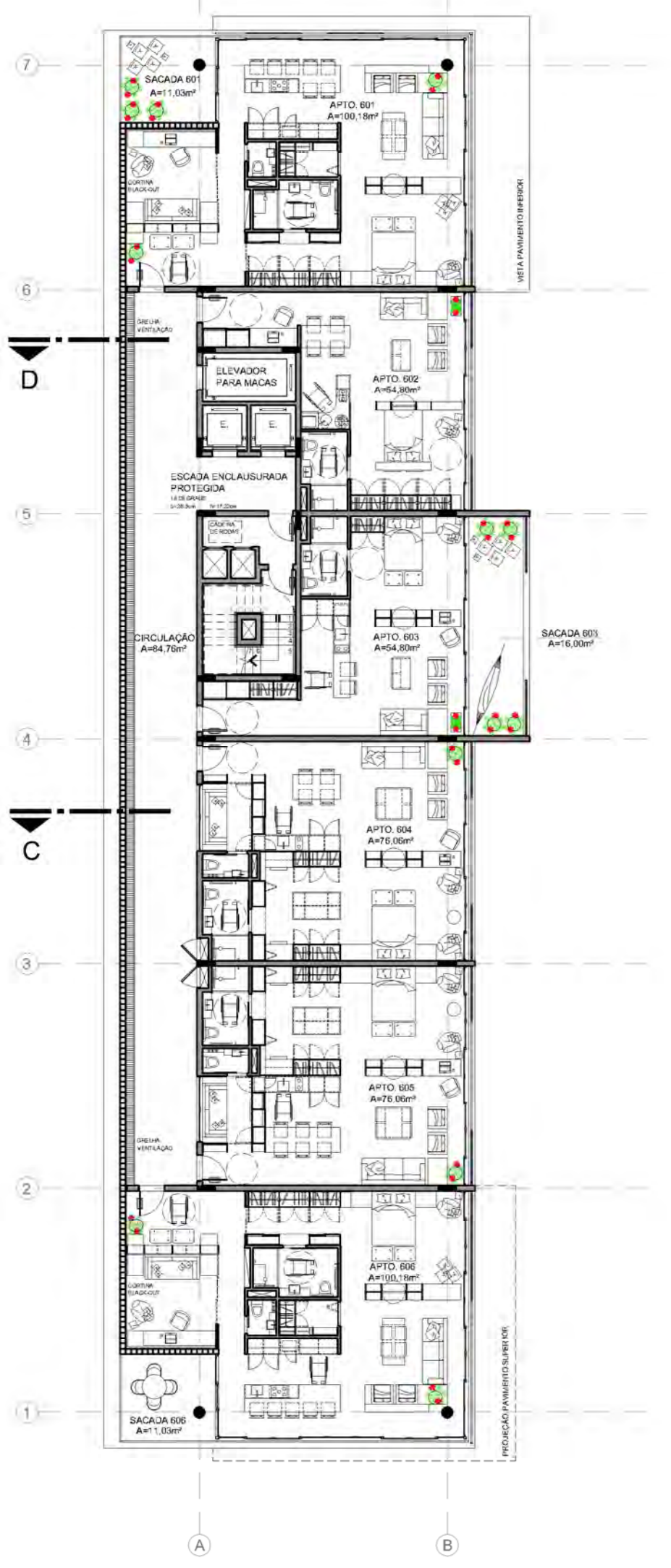
• Planta 5º pavimento







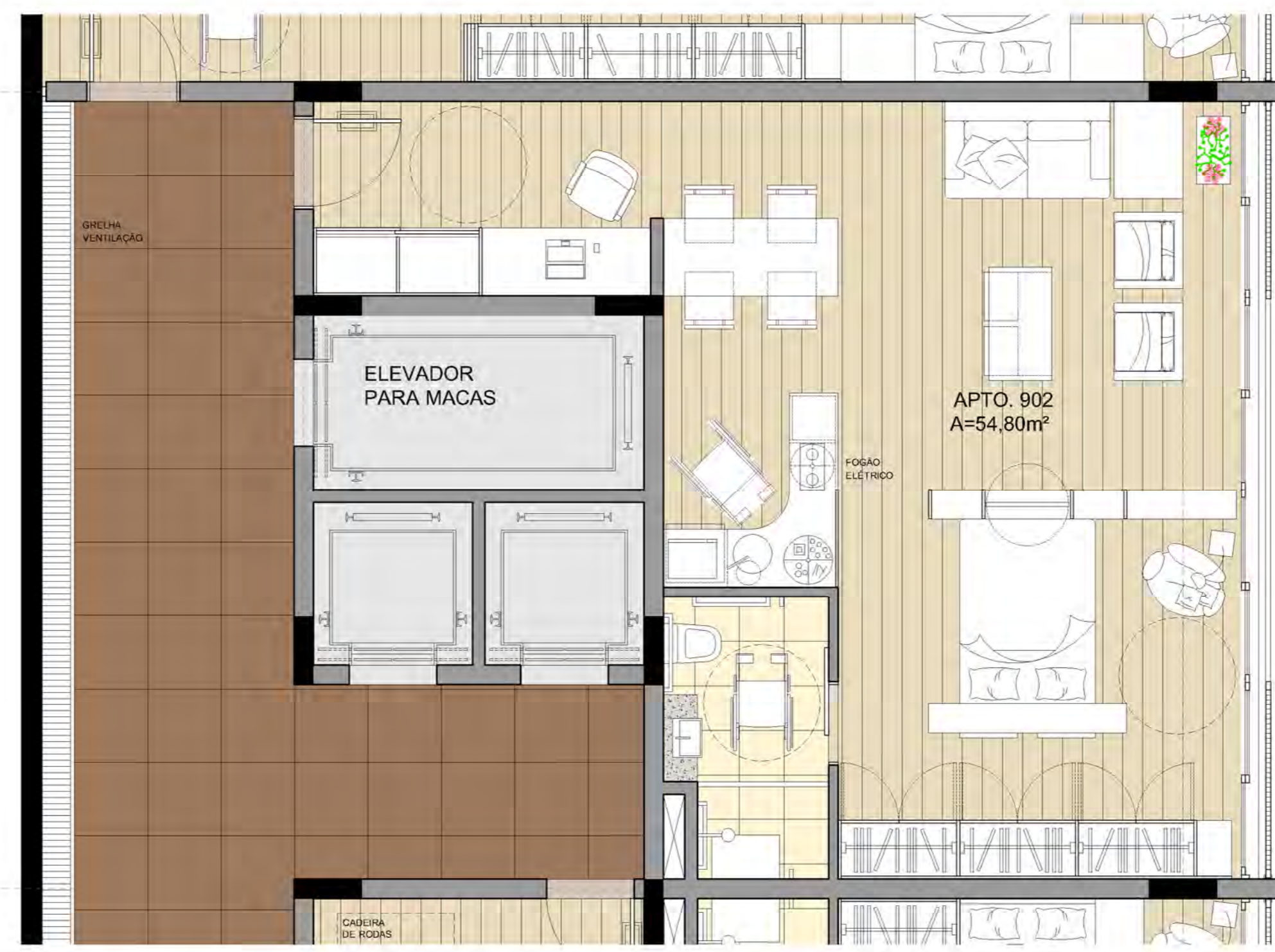
• Planta 6º pavimento



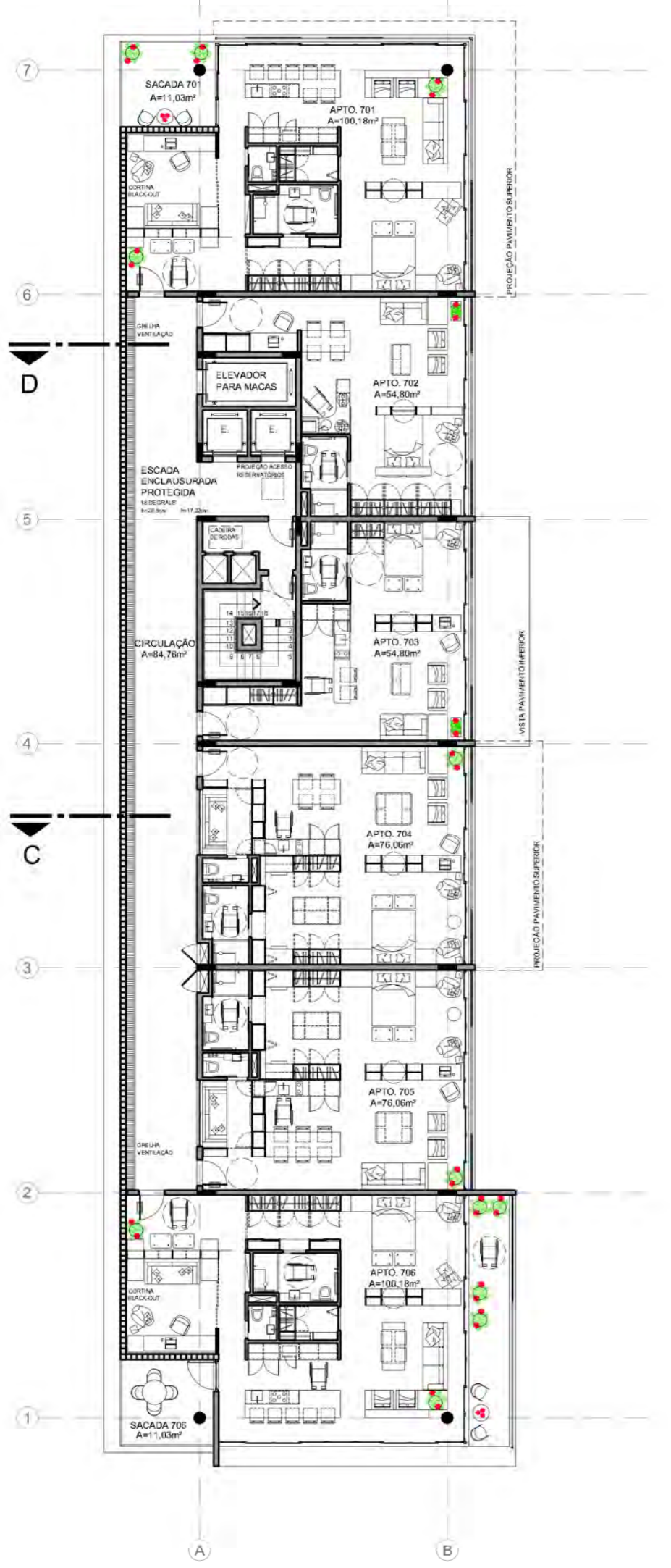
• Planta 8º pavimento



• Apartamento tipo final 02



• Planta 7º pavimento



• Planta 9º pavimento



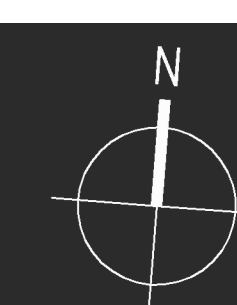
• Apartamento duplex-nível 1



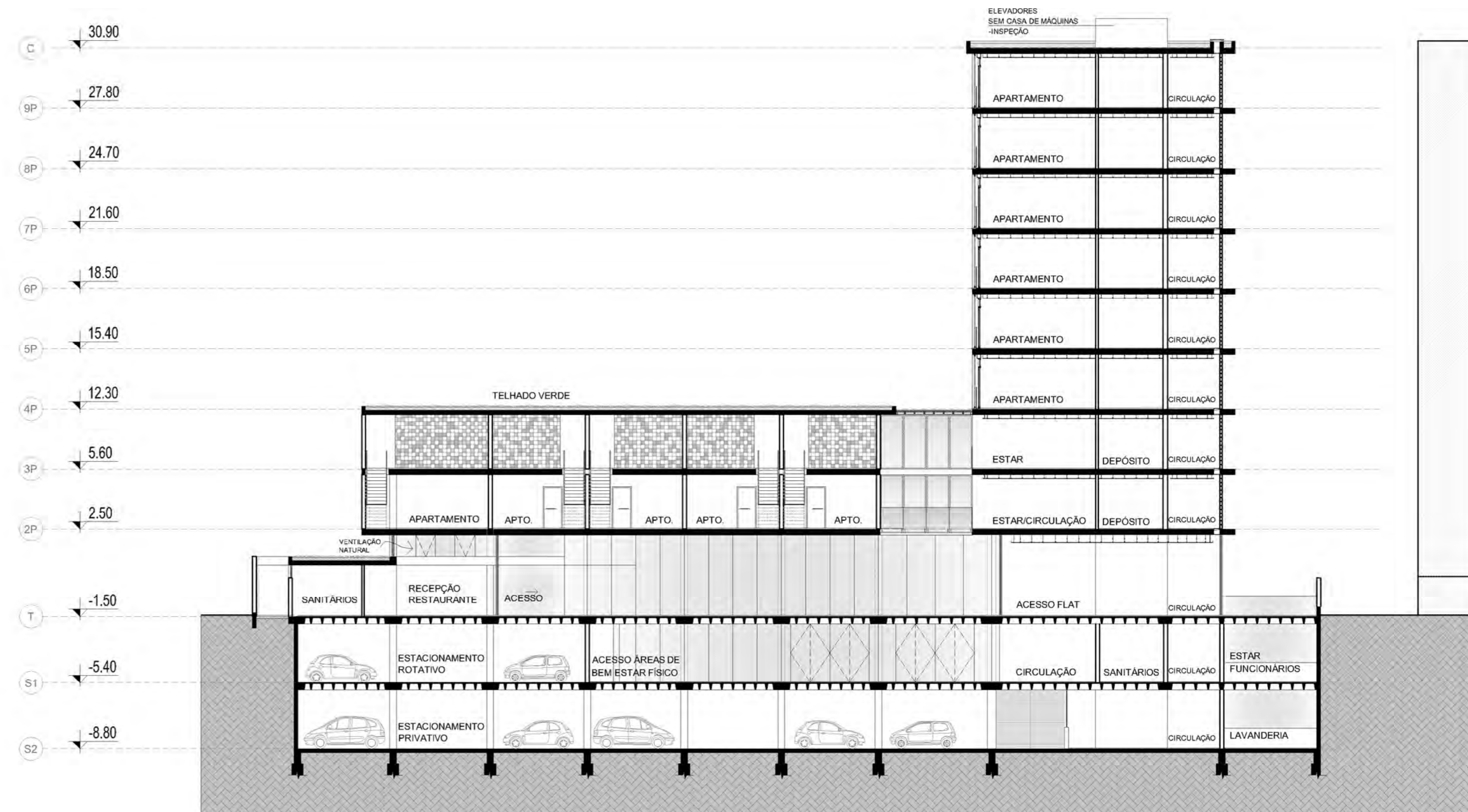
• Apartamento duplex-nível 2



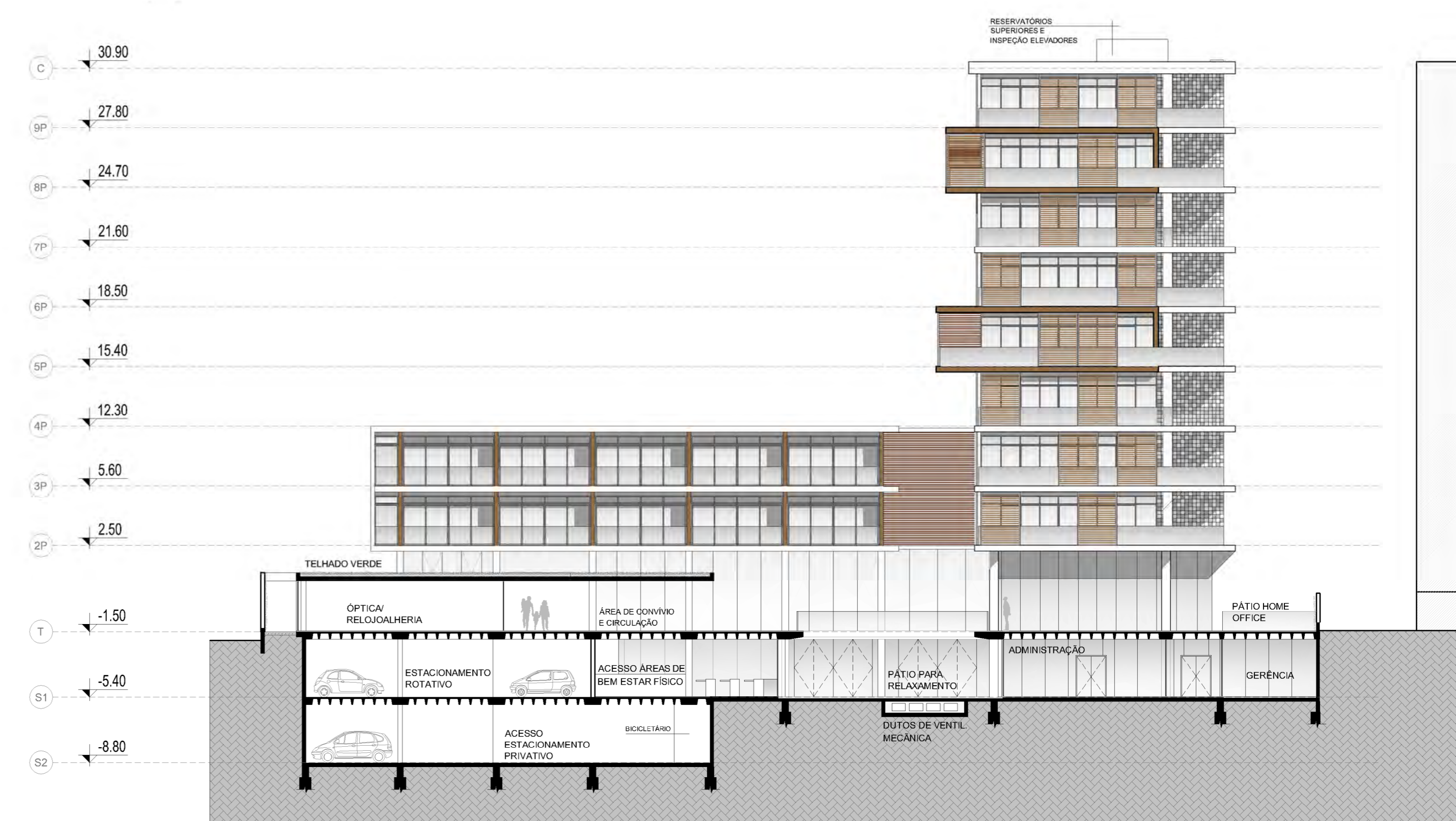




• Apartamentos tipo finais 04 e 05



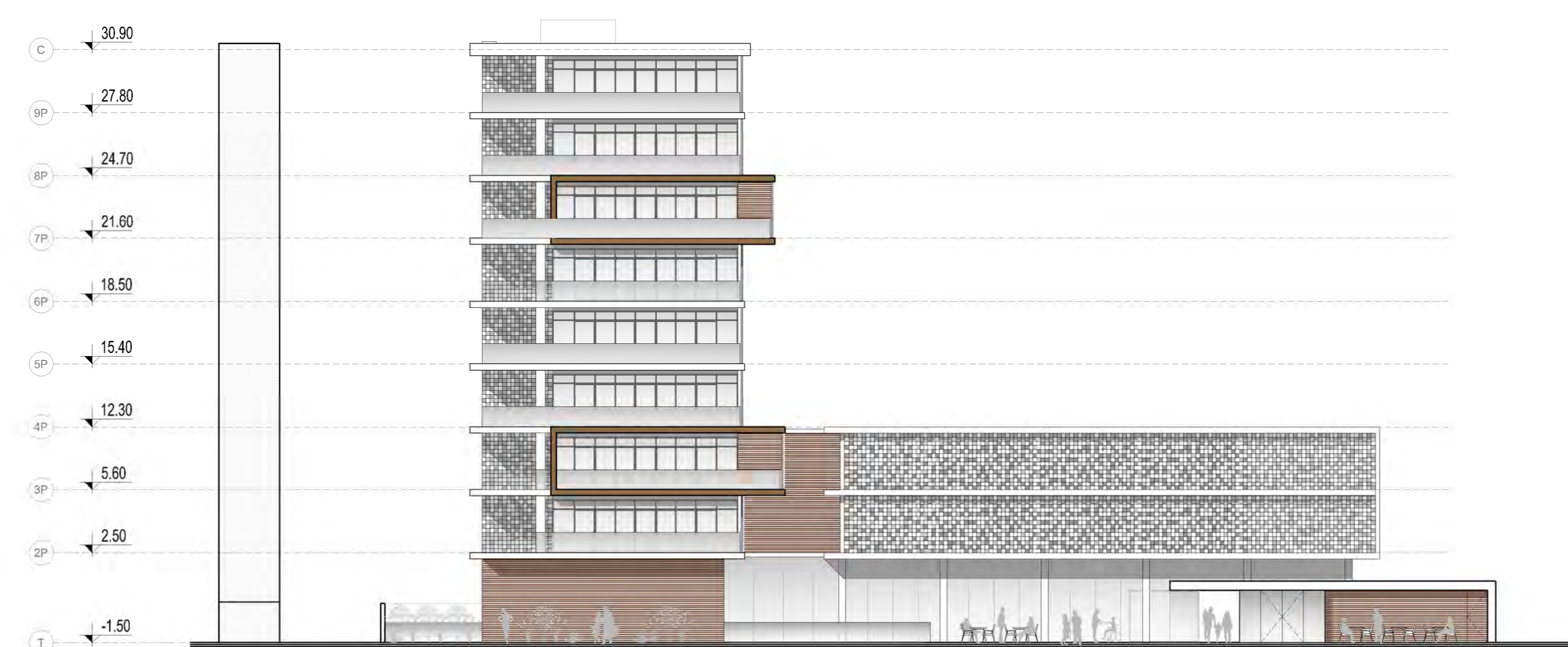
• Corte EE  
1.200



• Fachada Norte - Rua Tobias da Silva  
1.200



• Fachada Sul  
1.200



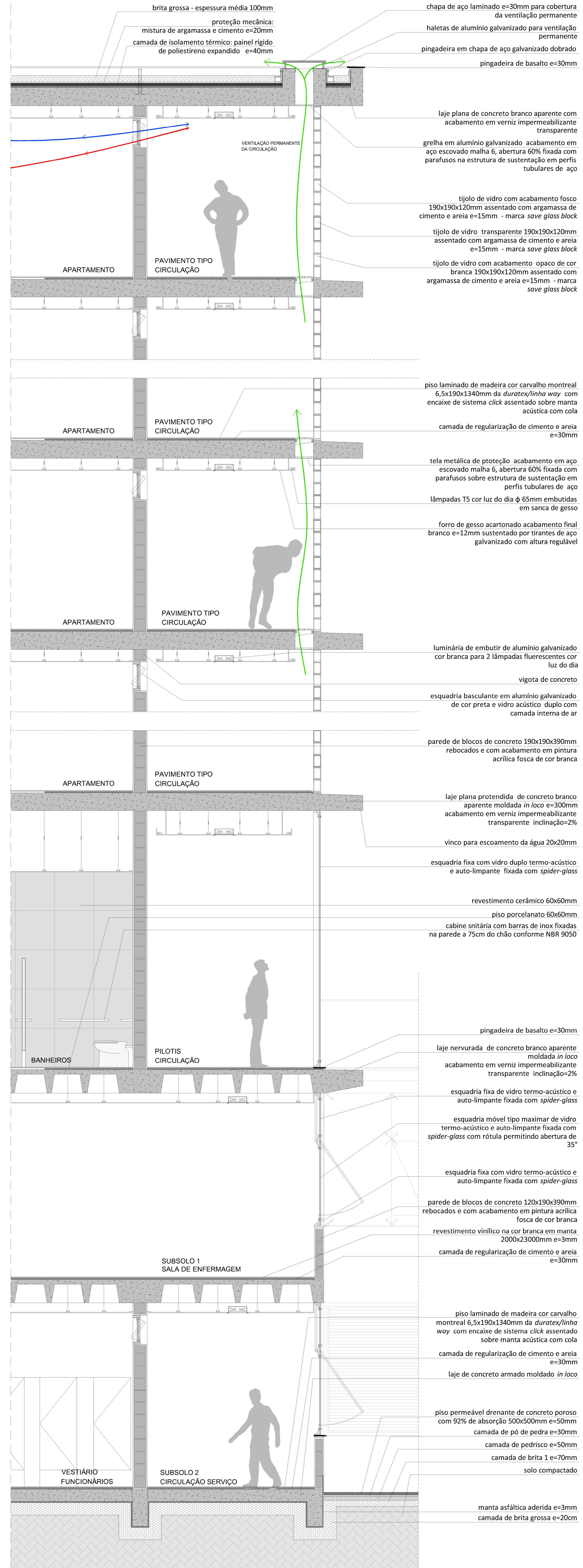
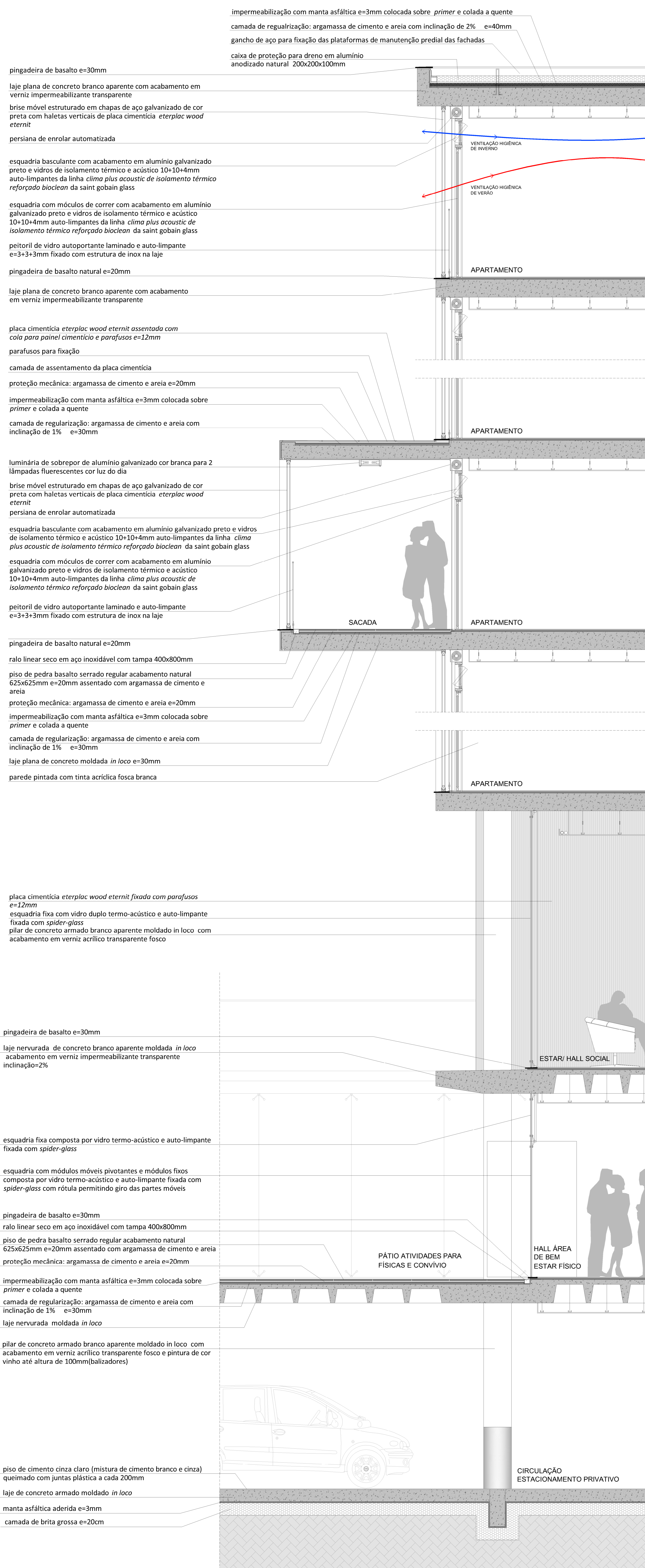
• Perspectivas





# • Corte setorial CC

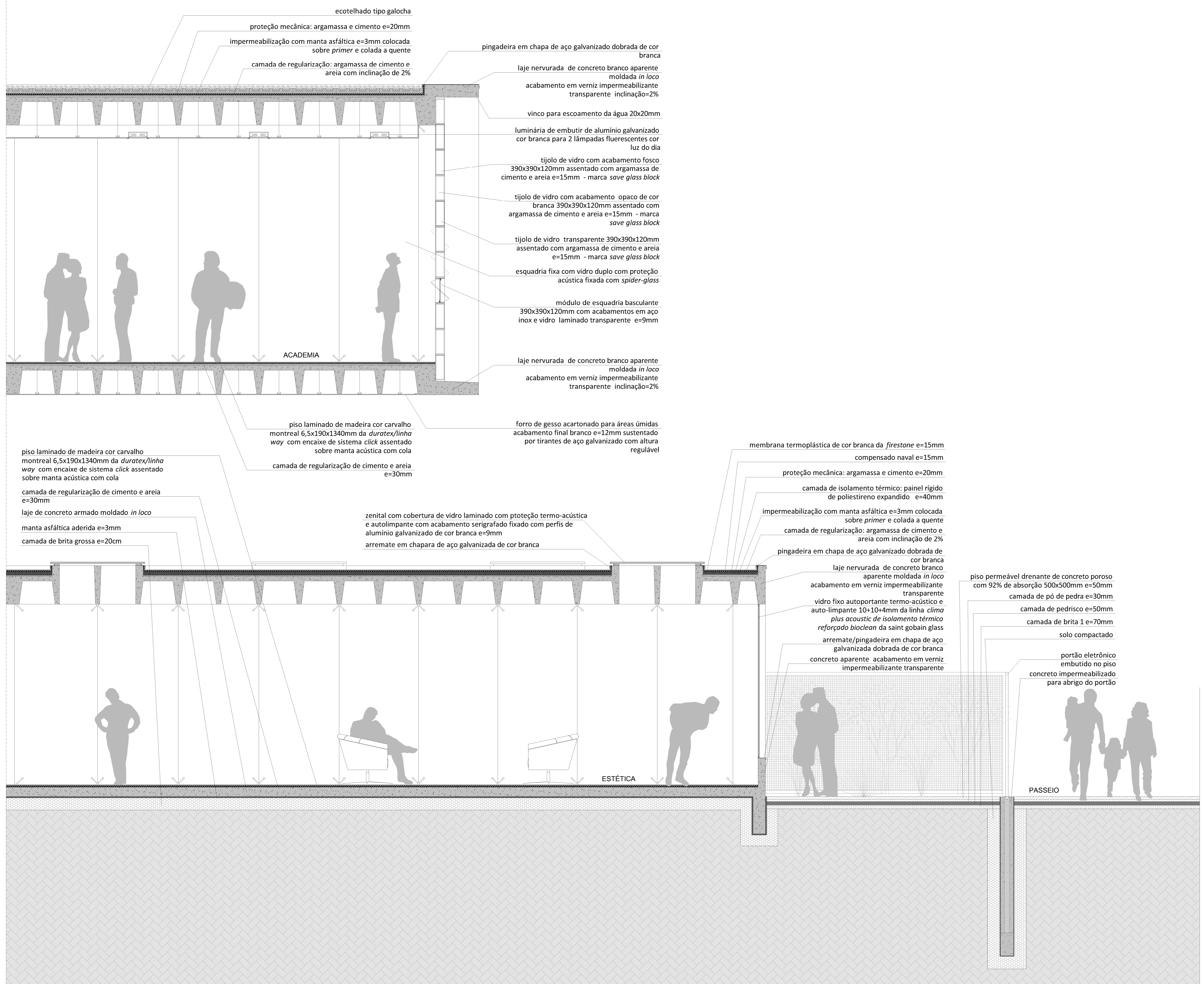
## 1.25





# • Corte setorial AA

## 1.25



# • Perspectiva

