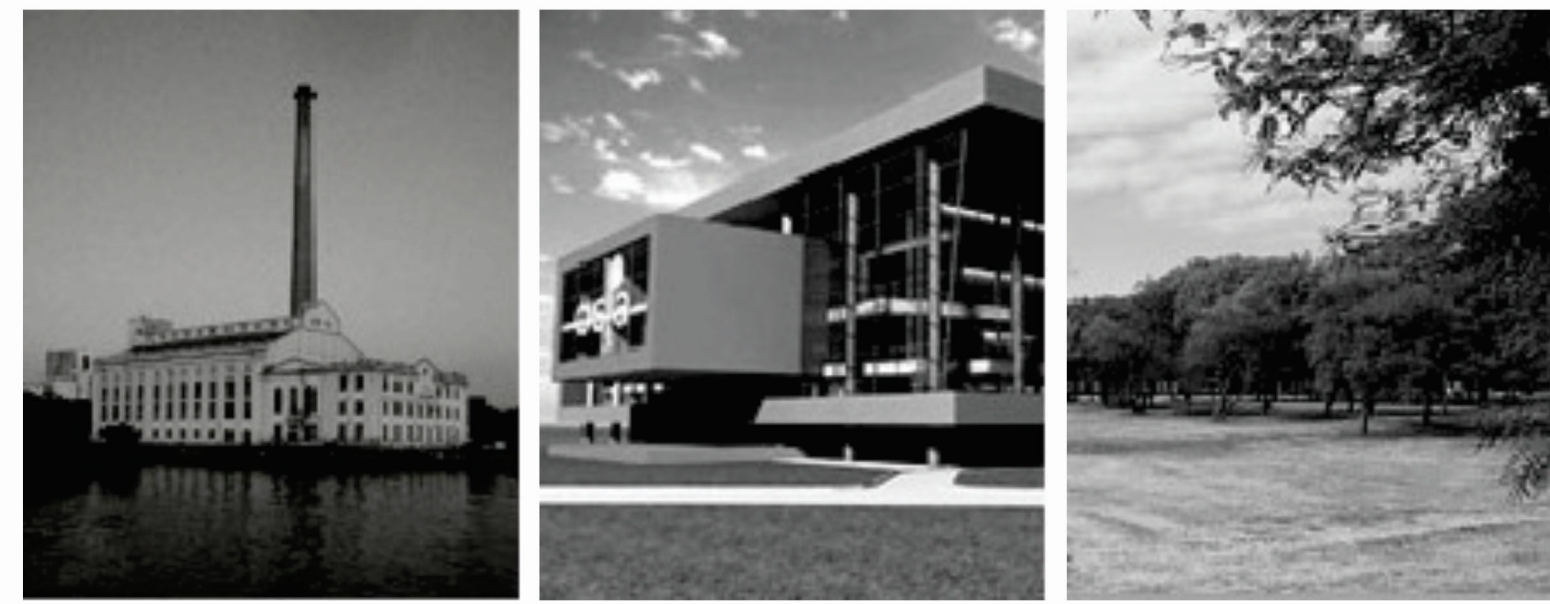
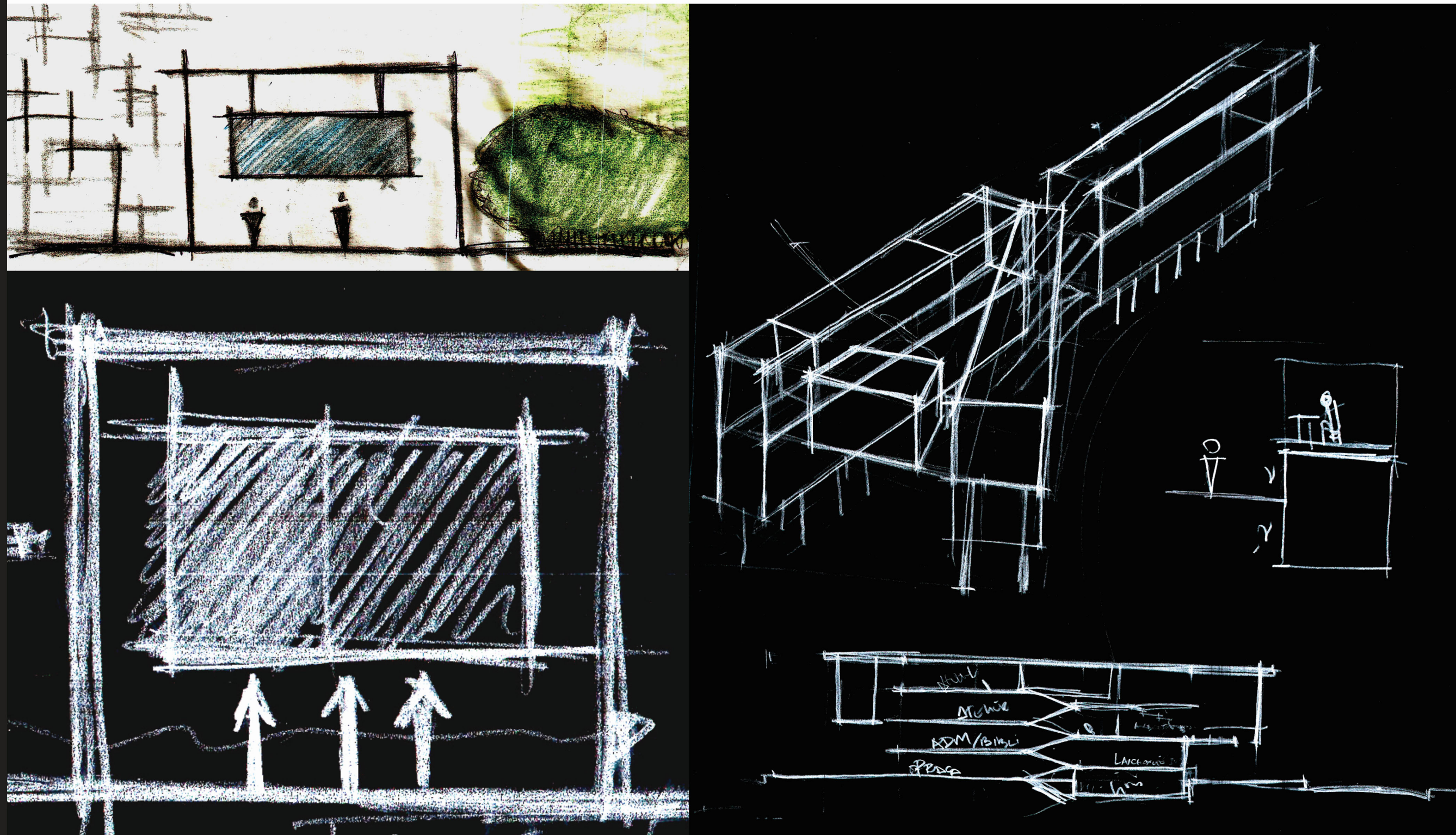


# desenvolvimento do projeto



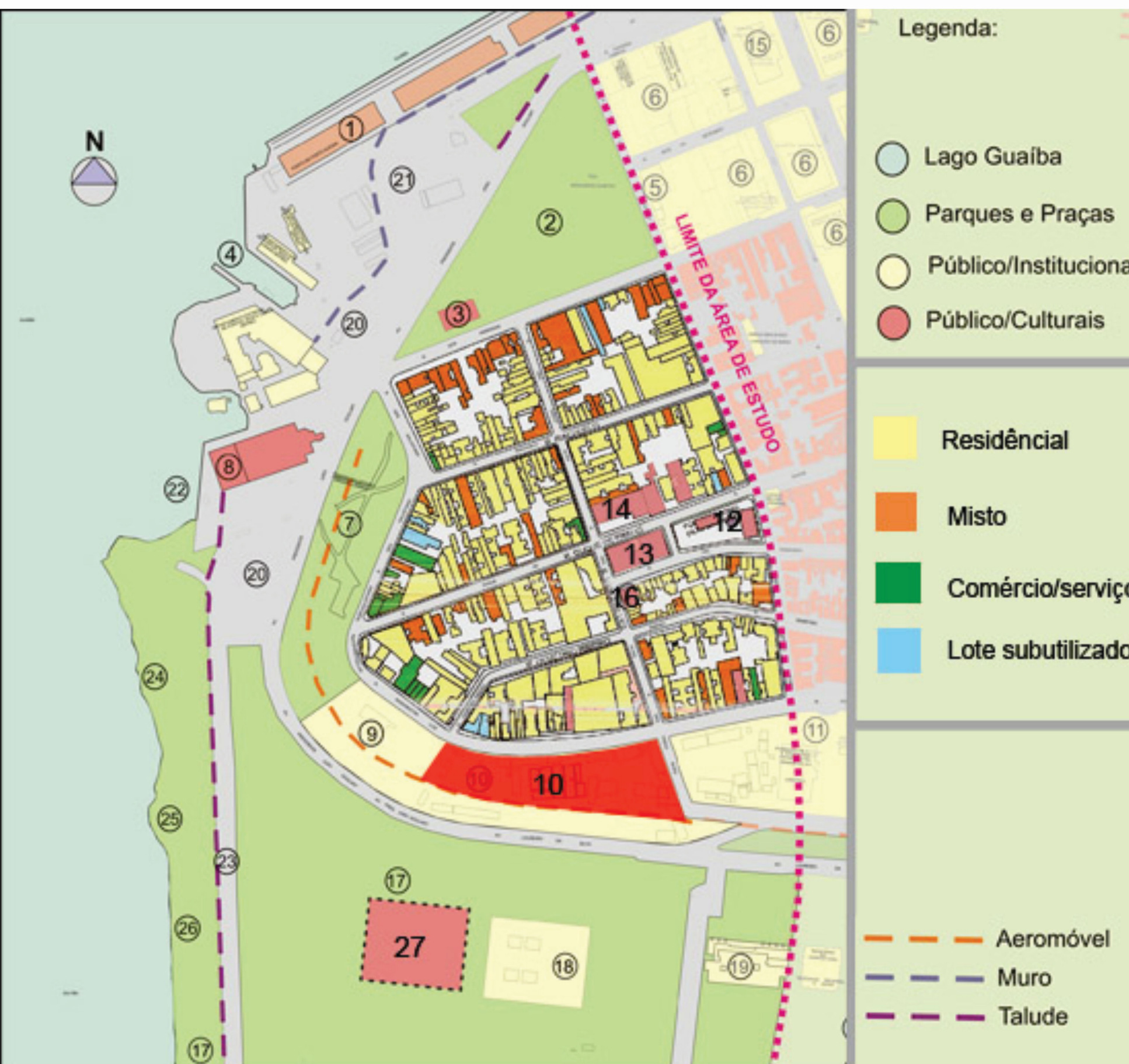
caixa de idéias  
integração - privacidade  
organização fluidez  
contemplação  
permeabilidade

# condicionantes legais

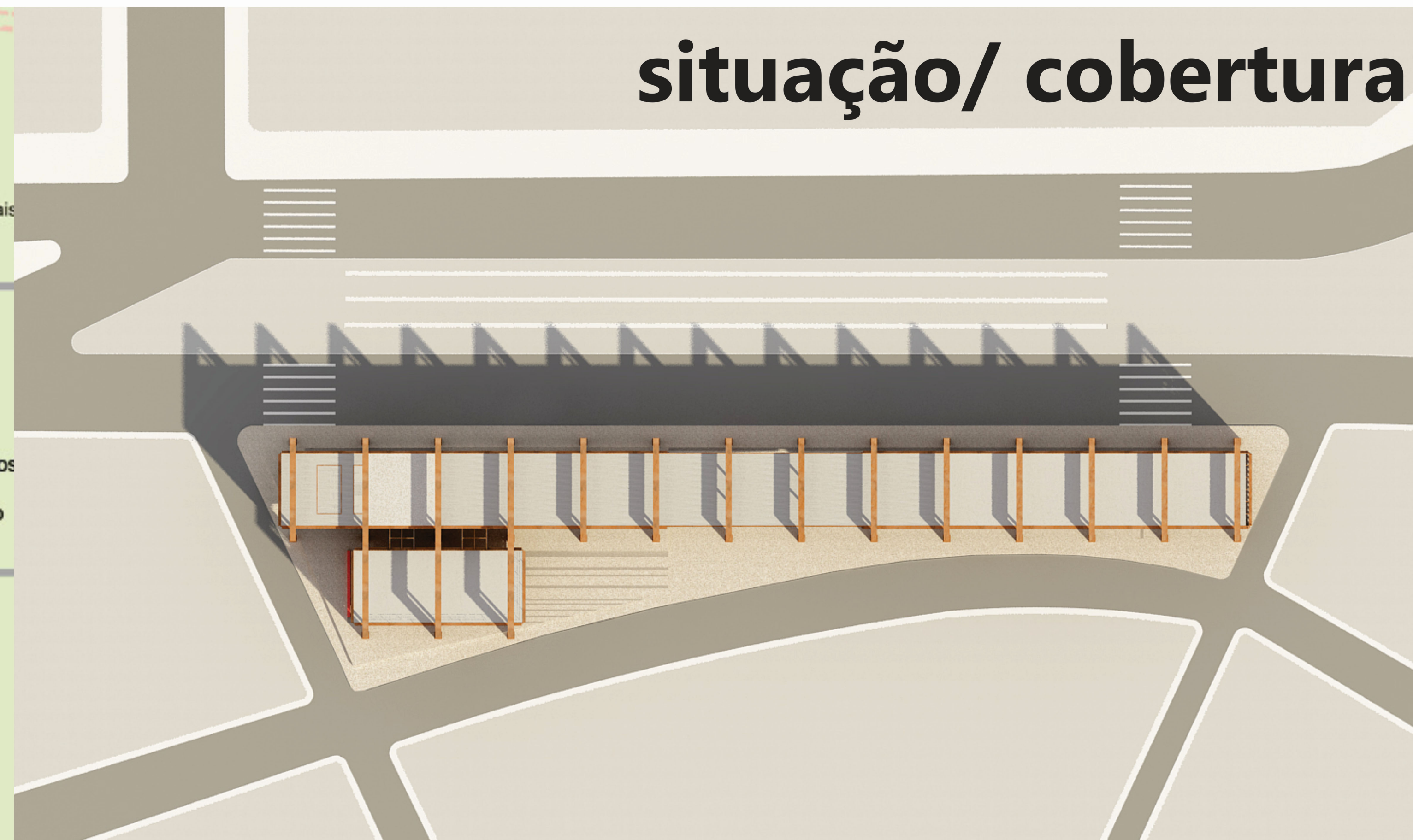


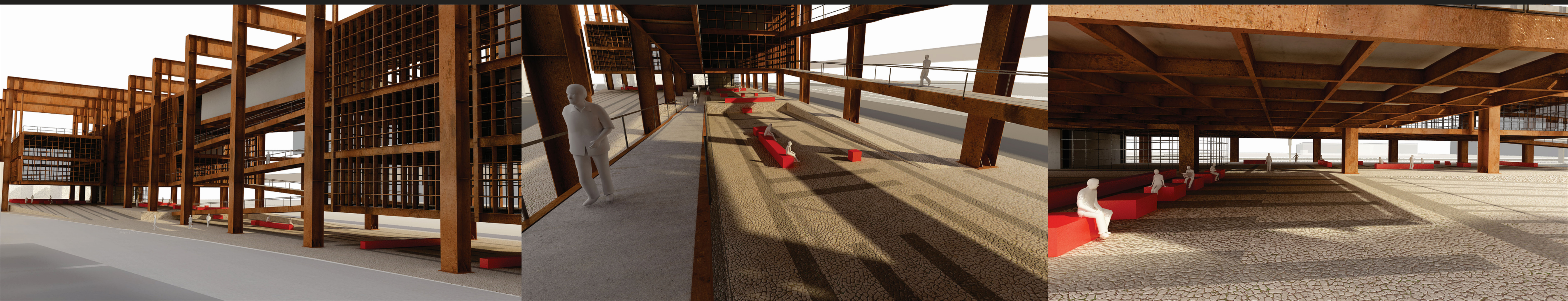
# localização

- equipamentos, uso do solo e atividades existentes*
- Legenda:
- 1- Armazéns do Cais do Porto
  - 2- Praça Brigadeiro Sampaio
  - 3- Museu do Trabalho
  - 4- Marina Pública
  - 5- Capitania dos Portos
  - 6- Brigada Militar
  - 7- Praça Júlio Mesquita
  - 8- Usina do Gasômetro
  - 9- DMAE-DMLU
  - 10- **TERRENO**
  - 11- CIENTEC
  - 12- Praça General Osório
  - 13- Escola Estadual Ernesto Dorneles
  - 14- TRE
  - 15- Tribunal de Contas
  - 16- Castelinho
  - 17- Parque da Harmonia
  - 18- Câmara Municipal
  - 19- Ministério da Fazenda (Chocolatão)
  - 20- Estacionamento
  - 21- Posto de Entrega Voluntária De Lixo Reciclável
  - 22- Saída passeios de barco
  - 23- Av. Edvaldo Pereira Paiva (Beira-Rio)
  - 24- Mirante
  - 25- Mirante e Sanitário Público
  - 26- Escadaria
  - 27- Nova sede da OSPA

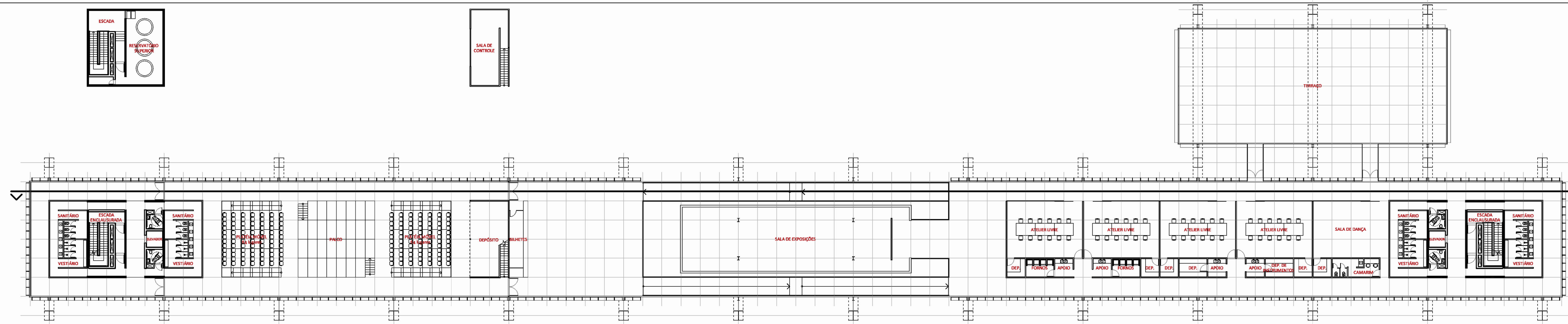


# situação/ cobertura



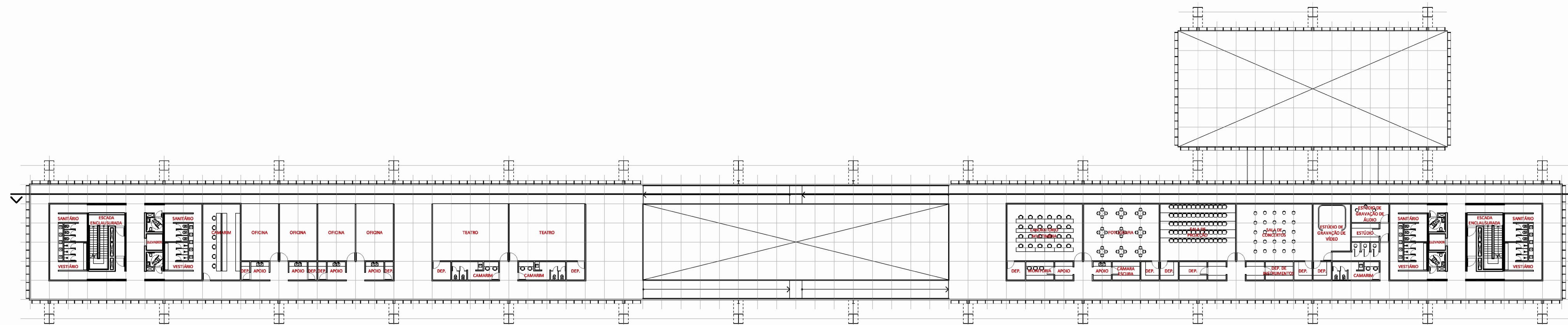


**6° pav.**  
escala 1:200



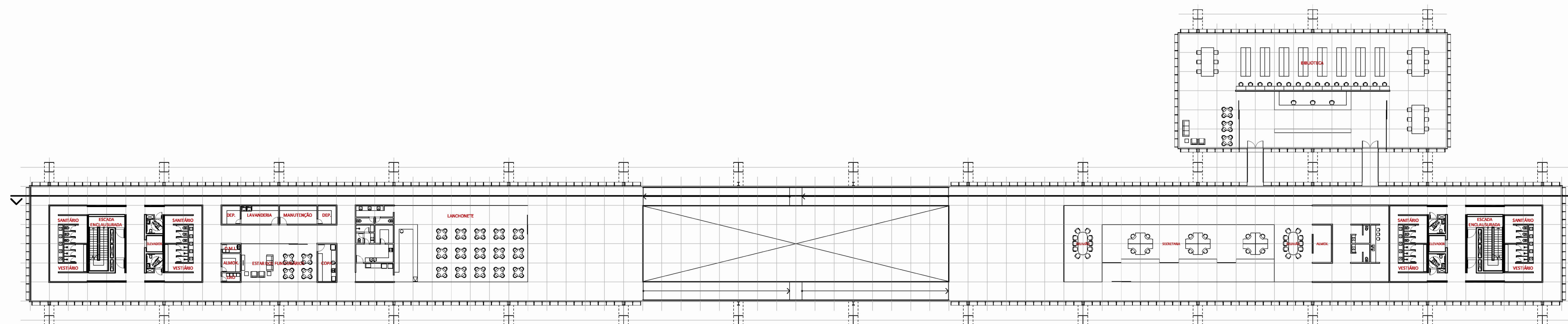
**7° pav.**  
escala 1:200

**4° pav.**  
escala 1:200



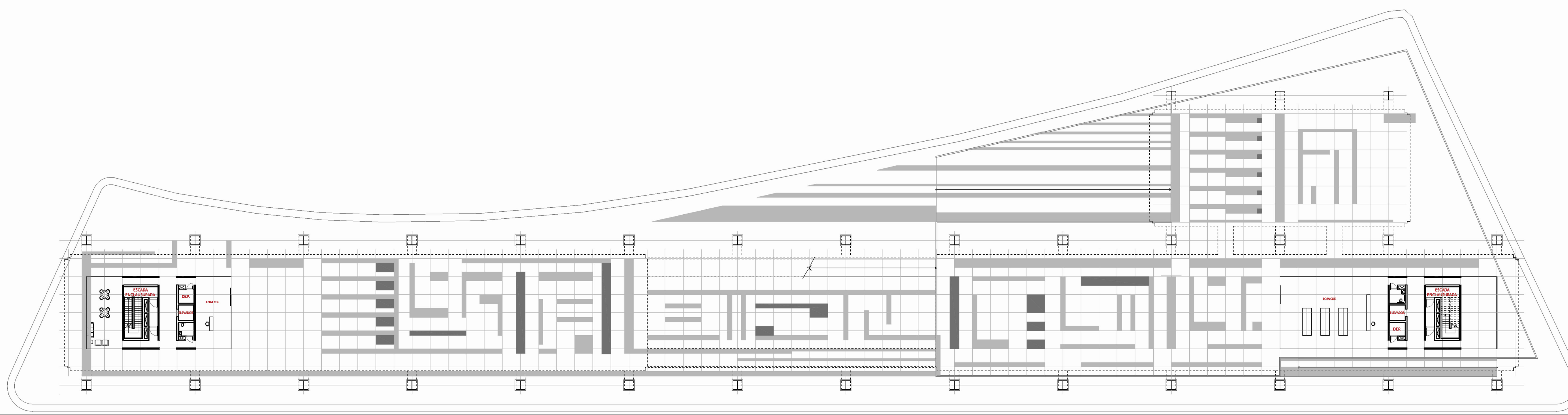
**5° pav.**  
escala 1:200

**2° pav.**  
escala 1:200



**3° pav.**  
escala 1:200

**pav. térreo**  
escala 1:200



**pav. térreo**  
escala 1:200

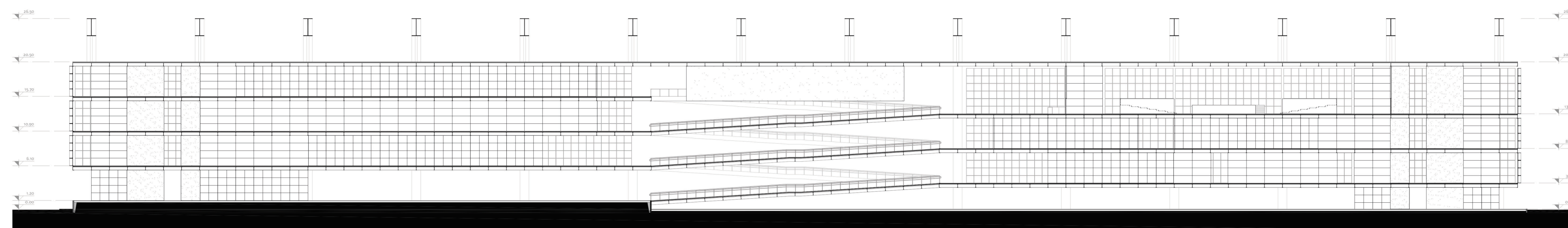
**fachada 01**  
escala 1:200



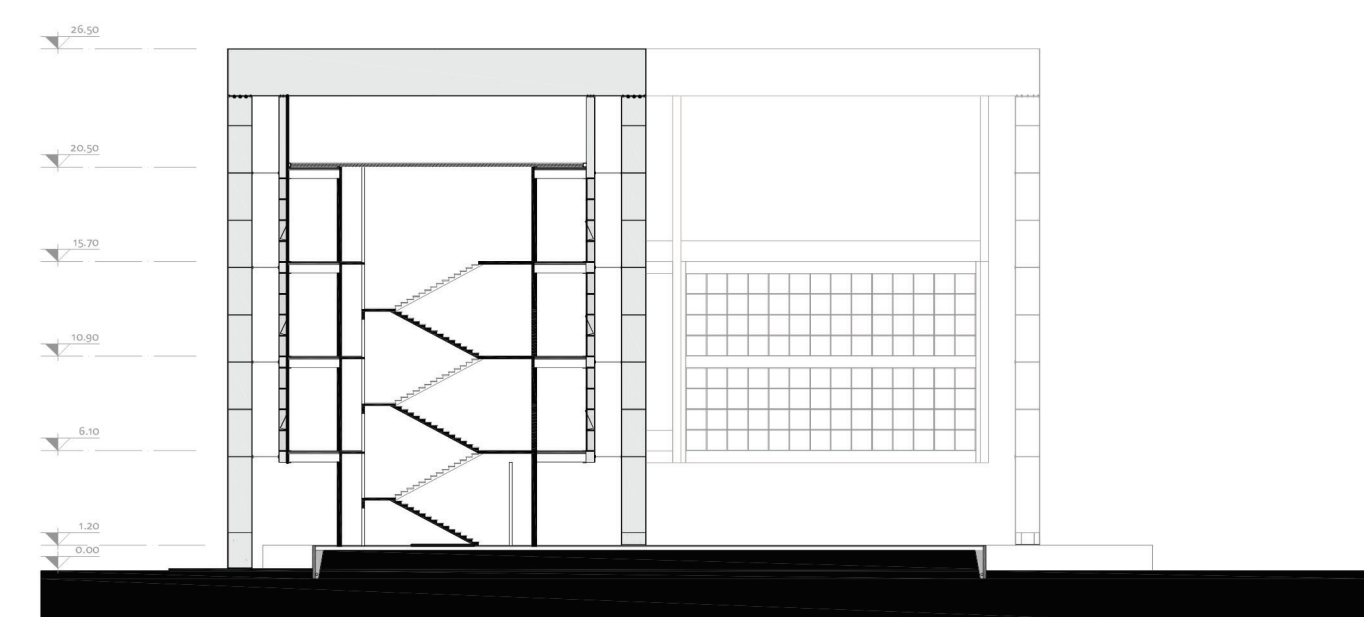
**fachada 02**  
escala 1:200



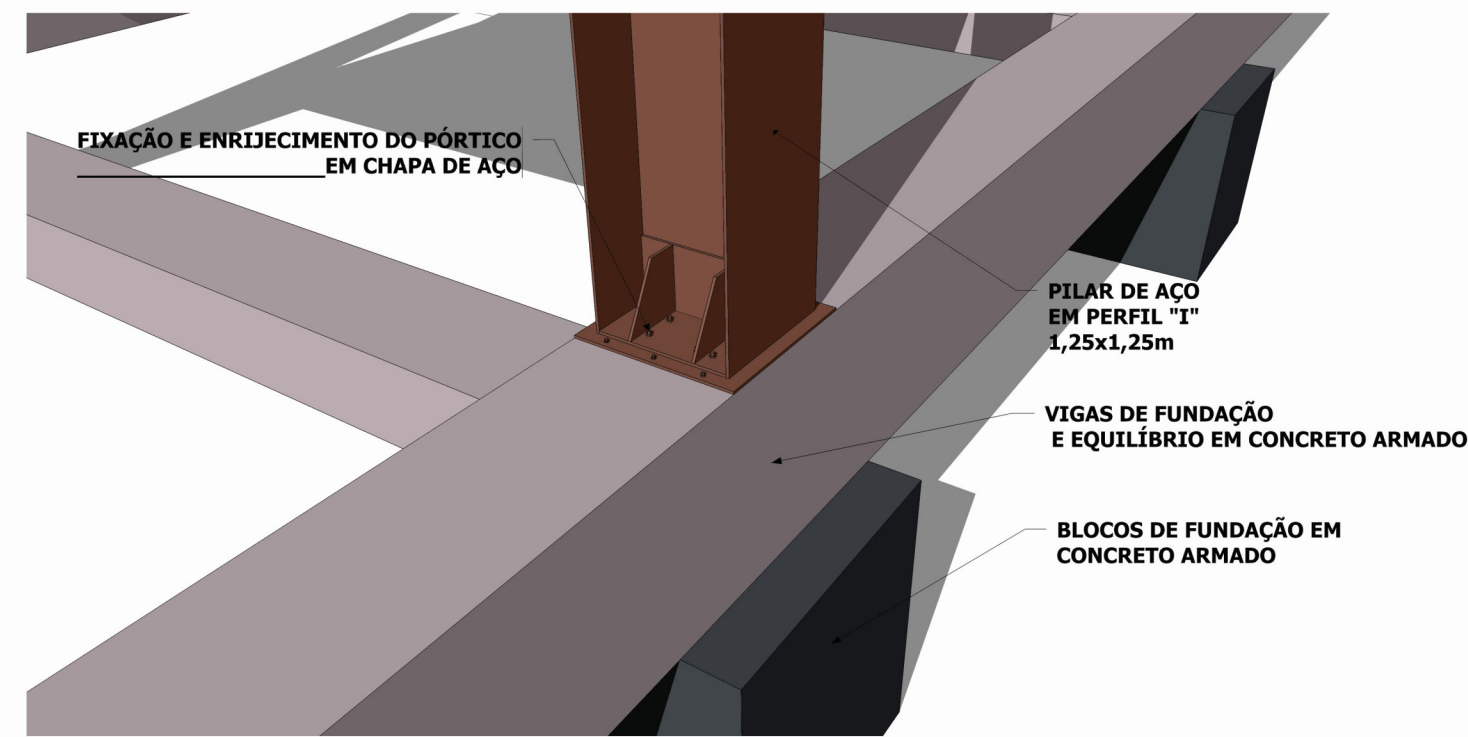
**corte longitudinal**  
escala 1:200



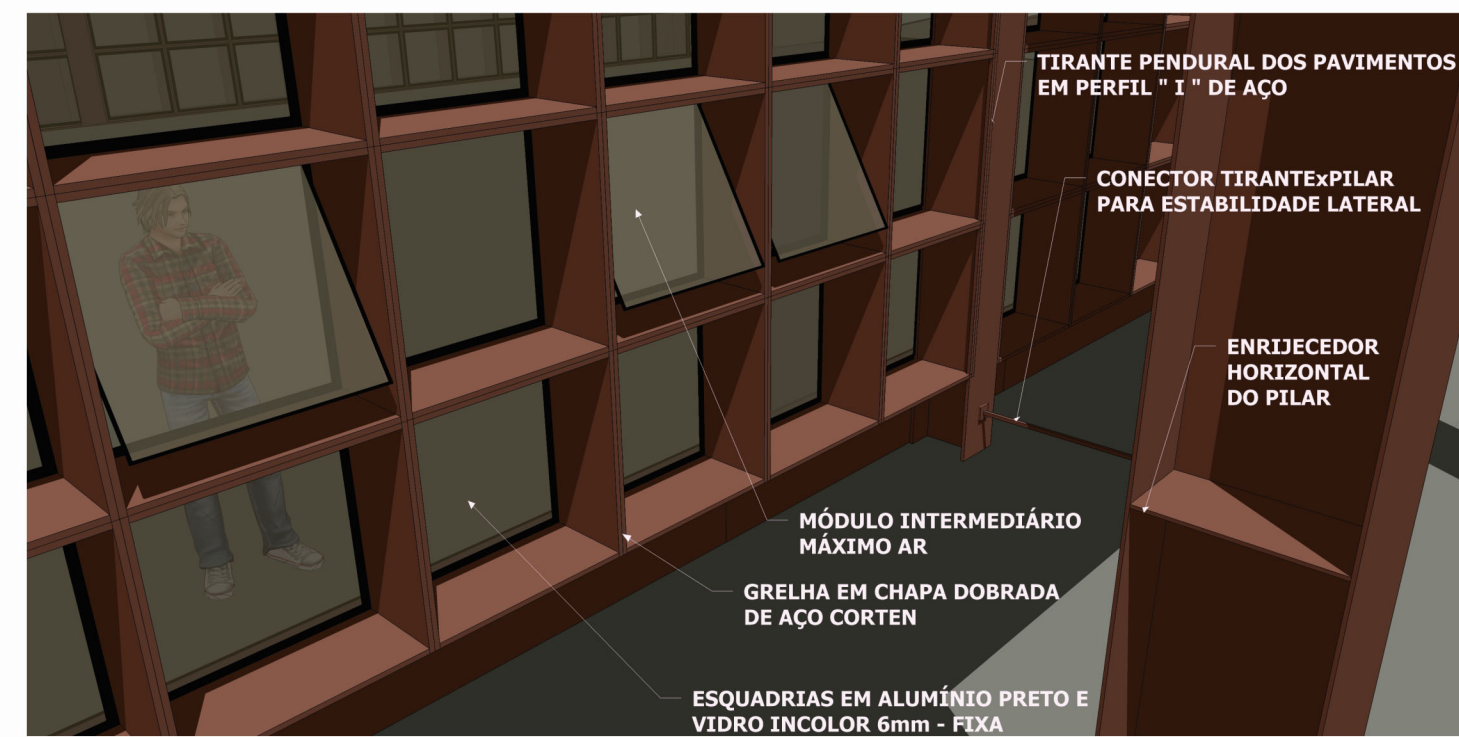
**corte transversal**  
escala 1:200



# detalhe 01



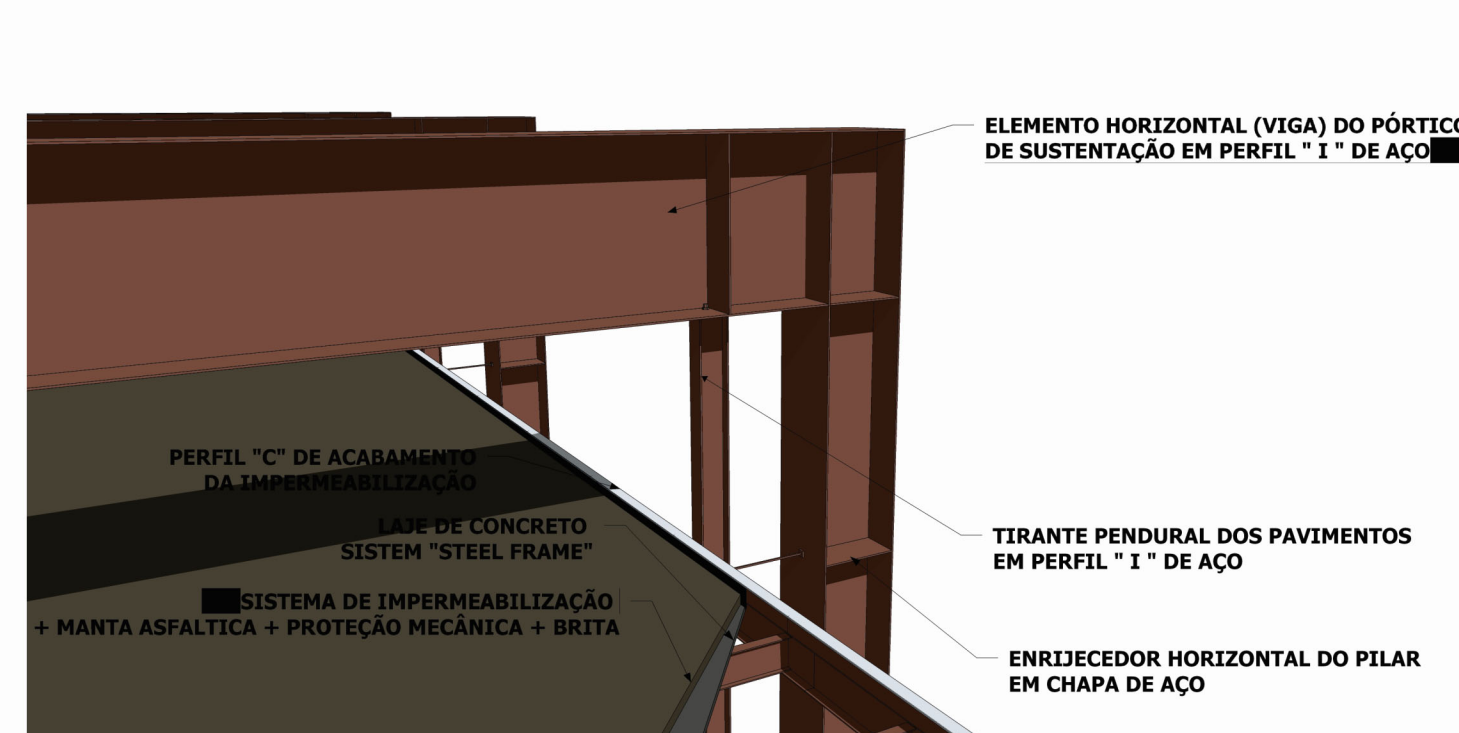
# detalhe 02



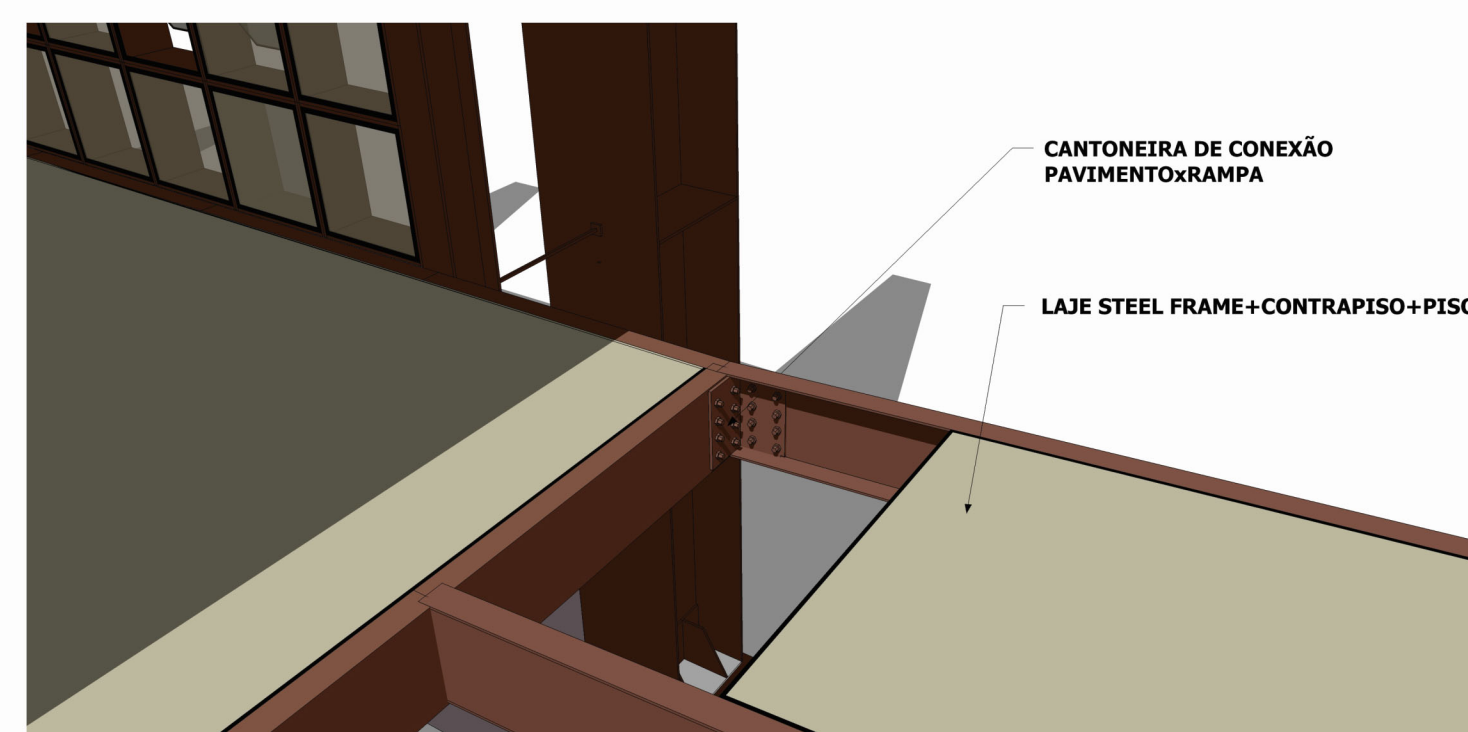
# detalhe 03



# detalhe 04



# detalhe 05



# corte de pele

