

UNIVERSIDADE FEDERAL DO RIO GRANDE DO SUL  
INSTITUTO DE CIÊNCIAS BÁSICAS DA SAÚDE  
CURSO DE GRADUAÇÃO EM BIOMEDICINA

Júlio Santos Terra Machado

**ANÁLISE DE NEURÔNIOS GABAÉRGICOS PARVALBUMINA-POSITIVOS EM  
ÁREAS SENSORIAIS NO MODELO ANIMAL DE AUTISMO INDUZIDO POR  
EXPOSIÇÃO PRÉ-NATAL AO ÁCIDO VALPROICO**

Porto Alegre

2017

Júlio Santos Terra Machado

**ANÁLISE DE NEURÔNIOS GABAÉRGICOS PARVALBUMINA-POSITIVOS EM  
ÁREAS SENSORIAIS NO MODELO ANIMAL DE AUTISMO INDUZIDO POR  
EXPOSIÇÃO PRÉ-NATAL AO ÁCIDO VALPROICO**

Trabalho de conclusão de curso de graduação  
apresentado ao Instituto de Ciências Básicas  
da Saúde da Universidade Federal do Rio  
Grande do Sul, como requisito parcial para  
obtenção do título de Bacharel(a) em  
Biomedicina.

Área de Habilitação: Bioquímica

Orientadora: Prof<sup>ª</sup>. Dr<sup>ª</sup>. Carmem Juracy Silveira Gottfried

Co-orientadora: Me. Mellanie Fontes Dutra da Silva

Porto Alegre

2017

“ [...] E a normalidade era precisamente o mais terrível daquela guerra infinita: não acontecia nada.”

Gabriel García Márquez, Cem Anos de Solidão.

“O espírito sem limites é o maior tesouro do homem.”

J. K. Rowling, Harry Potter e a Ordem da Fênix,

## AGRADECIMENTOS

Aos meus pais Jesus e Véra, agradeço por toda dedicação, apoio e amor incondicional. Cada passo, etapa e conquista da minha vida deve ser dedicado a vocês, que têm paciência pra aguentar um dos filhos mais mau humorados da história (mas que os ama do fundo do coração).

À minha avó Maria (da qual herdei as fortes convicções que muitos insistem em chamar de “teimosia”, vai entender), por demonstrar que a humildade e a dedicação podem te levar a qualquer lugar – sem sobrepujar ninguém.

Ao meu avô Hercílio, por mostrar que amizade e honestidade te fazem dignos qualquer que seja a posição onde estejas.

Aos meus avós Zé Terra e Nina (in memoriam) por terem me mostrado, de diversas formas, que o amor à família lança suas raízes para muito além.

Às minhas tias Mair, Leda, Izabel, Sônia e Simone e tios Pedro Antônio, Heraldo, Zezinho e Paulinho por apoiarem minha educação e, principalmente, por serem as melhores tias e tios que qualquer sobrinho poderia ter, seja nos momentos de dificuldade, seja nos momentos de alegria.

A todos os meus primos, por serem meus primeiros e eternos amigos e por me proporcionarem os melhores almoços e madrugadas de conversa.

À minha orientadora, Professora Carmem, agradeço por todo apoio, dedicação e entusiasmo dedicados a esse trabalho e a todos os outros do grupo. É apenas graças a pessoas focadas, críticas e engajadas como ela que temos os avanços apresentados atualmente (e, se depender, teremos o infinito e muito mais).

À minha co-orientadora e amiga Mellanie Dutra, por me mostrar que sempre há um solução para os piores problemas – sejam eles na imunofluorescências ou na vida. Te agradeço de um jeito que nem o confocal (nem eu) é capaz de mensurar – mas tu sabes.

Aos meus companheiros de laboratório Mauro, Iohanna, Brum, Gui, Bruna, Giovanna e Marília, por todo o apoio durante os tempos árdusos do TCC, especialmente pelos menes que me auxiliaram na grande jornada que é não perder a sanidade. Não desistam de mim apesar de eu não conseguir resolver um mísero sudoku, pelo menos eu levo café! <3

À minha melhor amiga, Vitória Lemos, não há o que agradecer em especial – apenas dizer que sem ti nada disso teria sentido. Mais do que Watson, tu dá significado às coisas (desde 2006?) e me faz crescer junto contigo. É maravilhoso.

Às amigas Mariana e Taís, agradeço por todos os momentos maravilhosos e principalmente nunca terem desistido de me arrastar pras festas das quais certamente teria me arrependido de não ir. Muito amor!

Ao meu grande amigo, Marcos Braz, agradeço pela capacidade de compartilhar os melhores e piores momentos e por me mostrar que vinho na concha, plantagrama e placa do brechó são apenas uma prévia dos acertos que ainda estão por vir.

Aos meus grandes amigos Vitor, Frê e André, por tudo que fizeram por mim desde que eu era piá. No mundo de um filho único vocês são os irmãos com quem eu posso contar na boa, na ruim e, principalmente, no vinho.

Às minhas queridas e desaparecidas amigas Marina e Fernanda, por também fazerem parte da minha vida desde o princípio dos tempos e por serem muito especiais (apesar do sumiço)!

Aos amigos, Dudu Cleney, Lorenzo, Laura, Julia Momo, Betina, Ana, Júlia Constante, Manu, Pavão e Felipe agradeço por todos os momentos de alegria, diversão, trago e carnaval em SS! Que a gente sempre possa compartilhar desses momentos sensacionais.

Aos amados amigos Maria Eduarda, Anna Carolina, Lucio, Sanvitto, Eugênio, Yan e João Vicente por serem a melhor parte do ensino médio e por me proporcionarem momentos de alegria, alimentação vasta, festas e, digamos, um pouco de vergonha

À grande amiga Izabela Espíndula, por me acompanhar durante todos os anos de graduação, me ajudando a manter as forças pra continuar, compartilhando bons momentos e bloqueando todos os efeitos destrutivos dos meus choros.

Aos novíssimos e incríveis amigos Jessica, Paulinho, Gabriel e Lennon, por fazerem a Fernandes ou qualquer outro lugar um ambiente maravilhoso e por estarem comigo em momentos em que eu só precisava esquecer o TCC.

Às minhas eternas professoras Ana Ibraima e Ana Lemos, pelos conhecimentos passados e pela referência de respeito à diversidade que levo sempre comigo. Ah, e pela MELHOR carona pra Praia Nova da história!

À família Lemos, por serem pessoas sensacionais, especialmente ao tio Kico, por todos os resgates e papos reflexivos, à tia Iza pela irreverência, carinho e divertimento de sempre e à tia Lêda, tio Paulo e Tina, por terem a casa com maior densidade de pessoas maravilhosas da praia e pela sopa salvadora (certamente sem ela eu não teria chegado até aqui).

À praia de São Simão, por ser o lugar onde tudo que é maravilhoso acontece.

## SUMÁRIO

<b>1. INTRODUÇÃO.....</b>	<b>13</b>
1.1 Transtorno do Espectro Autista.....	13
1.2 Ácido Valproico.....	15
1.3 Modelo Animal.....	16
1.4 Desequilíbrio Excitatório-Inibitório e Alterações Sensoriais.....	17
1.5 Neurônios GABAérgicos positivos para parvalbumina.....	19
1.6 Área Somatossensorial Primária.....	21
1.7 Região da Amígdala.....	23
<b>2. JUSTIFICATIVA.....</b>	<b>25</b>
<b>3. OBJETIVOS.....</b>	<b>26</b>
<b>4. TRABALHO EXPERIMENTAL NA FORMA DE ARTIGO CIENTÍFICO.....</b>	<b>31</b>
<b>5. CONCLUSÕES E PERSPECTIVAS.....</b>	<b>48</b>
<b>6. REFERÊNCIAS ADICIONAIS.....</b>	<b>50</b>
<b>7. ANEXO A: NORMAS PERIÓDICO NEUROSCIENCE.....</b>	<b>54</b>
<b>8. ANEXO B: CARTA DE APROVAÇÃO DO COMITÊ DE ÉTICA.....</b>	<b>74</b>

## RESUMO

O Transtorno do Espectro Autista é uma desordem do neurodesenvolvimento caracterizada, segundo o DSM-V, por uma tríade comportamental: déficits de comunicação e interação social além de comportamentos repetitivos ou estereotipados. Outro aspecto de extrema importância para o transtorno são as alterações sensoriais presentes em mais de 90% dos indivíduos, tais como hiper-responsividades a estímulos não nocivos (visuais, táteis, auditivos) e hiporresponsividade a estímulos nocivos, que implicam em prejuízo na qualidade de vida. Apesar da etiologia do autismo não ser conhecida, tanto fatores genéticos quanto ambientais já foram associados à desordem, incluindo a utilização de ácido valproico (VPA) durante a gestação – situação que aumenta significativamente a chance do desenvolvimento de autismo nos filhos. Baseado nessas observações, desenvolveu-se um modelo animal de autismo induzido por exposição pré-natal ao VPA, validado pela identificação de diversas características (comportamentais, morfológicas e moleculares) do tipo autista. No presente trabalho, realizou-se uma análise quantitativa e organizacional de interneurônios GABAérgicos positivos para parvalbumina em regiões associadas com processamento sensorial – Área Somatossensorial Primária (ASSP) e Região da Amígdala (RAM). A obtenção dos animais passou por um processo inicial de acasalamentos, onde a verificação da fecundação foi comprovada através da identificação de espermatozoides no líquido vaginal na manhã posterior ao pareamento. As fêmeas do grupo VPA foram induzidas com uma injeção intraperitoneal de VPA (600mg/kg) no E12,5. Filhotes machos com 30 dias foram anestesiados e perfundidos com paraformaldeído 4% para promover a fixação tecidual, após a eutanásia realizou-se a remoção do encéfalo, posteriormente preservado em Tissue-Tek® a -80°C. O tecido foi cortado em criostato e as fatias contendo as estruturas de interesse foram identificadas através do atlas Paxinos. Realizou-se imunofluorescência com objetivo de obter três marcações: DAPI, NeuN e Parvalbumina (PV). As imagens foram obtidas por microscopia confocal e processadas no software ImageJ com o plug-in Cell Counter. A análise estatística foi realizada no software Graph Pad Prims 5, utilizando o Teste *t* de Student seguido de correção de Welch, considerando  $p < 0,05$  como significativo. Na ASSP o grupo VPA exibiu, além de severa desorganização laminar, redução significativa na quantidade de células não-neuronais na camada IV-V (1,26x), demonstrando um prejuízo em células gliais, essenciais para a manutenção da homeostase local, além disso, a quantidade e a densidade de neurônios PV-positivos também demonstraram redução significativa na camada IV-V (3,06x), enquanto na camada II-III (1,69x) houve um aumento significativo. Complementarmente, a análise de todas as camadas em conjunto não apresentou diferenças significativas para nesses parâmetros, demonstrando uma possível alteração na migração desses interneurônios entre as camadas corticais. Na Região da Amígdala, houve redução significativa do número e densidade de interneurônios PV+ no grupo VPA (2,66x) Considerando os dados apresentados, nós demonstramos pela primeira vez que a exposição pré-natal ao VPA induziu importantes alterações nas camadas corticais da ASSP e na RAM no que se refere a células não neuronais e neurônios inibitórios PV+. Esses prejuízos no componente inibitório provavelmente resultam em expressivas consequências no balanço excitatório/inibitório que poderiam explicar diversas alterações comportamentais identificadas.

**Palavras-chave:** TEA, sistema sensorial, modelo animal, parvalbumina, imunofluorescência, equilíbrio excitatório-inibitório.

## ABSTRACT

Autism Spectrum Disorder is a neurodevelopmental disorder characterized, according to DSM-5, by a behavioral dyad: impairments in communication and social interaction in addition to repetitive or stereotyped behaviors. Another extremely important aspect for ASD are the sensory alterations present in more than 90% of the individuals with ASD like hyper-responsiveness to non-harmful stimuli (visual, tactile and auditory) and hypo-responsiveness to harmful stimuli, which implies a great loss in life quality. Although etiology is not known, both genetic and environmental factors have been associated with the disorder, including the use of valproic acid during pregnancy – situation that significantly increases the chances of autism development in the children. Based on these observations, an animal model of autism by prenatal exposure to valproic was developed and validated by the findings (behavioral, molecular and morphological) of several autistic-like characteristics. In the present study, a quantitative and organizational analysis of parvalbumin-positive GABAergic interneurons was carried out in sensory processing related regions – Primary Somatosensory Area and Amygdala Region. Obtaining the animals underwent an initial process of mating, in which the fecundation check was confirmed by the presence of spermatozoa in vaginal smear in the morning after pairing. The female were separated and the VPA group received a intraperitoneal injection of VPA (600mg/kg) in E12.5. The 30 days old male pups were anesthetized and transcardiacally perfused with paraformaldehyde 4% to promote tissue fixation, after euthanasia the brain was removed and preserved in Tissue-Tek® at -80°C. The tissue was sliced in cryostat at -20°C and the slices containing the structures of interest were identified through Paxinos atlas. Immunofluorescence was made in order to identify three markers: DAPI, NeuN and Parvalbumin (PV). The images were obtained by confocal microscopy and processed in ImageJ software with Cell Counter plug-in. Statistical analysis realized in Graph Pad Prism 5 software, using Student's T test followed by Welch's Correction and considering  $p < 0.05$  as significant. In Primary Somatosensory Area, VPA group exhibited, besides severe laminar disorganization, significant reduction in non-neuronal cells in layer IV-V (1,26x), demonstrating impairment in glial cells, essential for maintaining local homeostasis, moreover, the quantity and density of PV-positive neurons also showed significant reduction in layer IV-V (3,06x), while in layer II-III (1,69x) was a significant increase. In addition to this, the analysis of all layers together didn't exhibited significant differences for PV+ quantity and density, demonstrating a possible alteration in the migration of these interneurons between the cortical layers. In Amygdala Region, the number and density of PV+ interneurons were significant reduced (2,66x) in VPA group. Considering the present data we demonstrated for the first time that prenatal exposure to VPA induced important alteration in PSSA cortical layers regarding to non-neuronal and inhibitory PV neurons. These impairments in the inhibitory component, probably have expressive consequences in the excitatory/inhibitory balance which may explain some behavioral alteration.

**Key-words:** ASD, sensory system, animal model, parvalbumin, immunofluorescence, excitatory/inhibitory balance.



## LISTA DE ABREVIATURAS

AMR – Amygdala Region

ASD – Autism Spectrum Disorder

ASSP – Área Somatossensorial Primária

CDC - Centers for Disease Control and Prevention

Desequilíbrio E/I – Desequilíbrio Excitatório/Inibitório

DSM - Manual Diagnóstico e Estatístico de Desordens Mentais, do inglês *Diagnostic and Statistical Manual of Mental Disorder*.

fMRI - Ressonância Magnética Funcional

GABA – Ácido gama-aminobutírico

GAD - Glutamato Descarboxilase

PSSA – Primary Somatosensory Area

PV+ - Positivo para Parvalbumina

RAM – Região da Amígdala

TEA – Transtorno do Espectro Autista

VPA – Ácido Valproico

## Lista de Figuras

<b>Figura 1:</b> Aumento na prevalência do Transtorno do Espectro Autista nos EUA entre os anos 2000 e 2010.....	<b>13</b>
<b>Figura 2:</b> Representação molecular do ácido valproico.....	<b>14</b>
<b>Figura 3:</b> Alterações em circuitos neurais no Transtorno do Espectro Autista.....	<b>17</b>
<b>Figura 4:</b> Esquema representativo dos interneurônios corticais.....	<b>19</b>
<b>Figura 5:</b> Esquema representativo dos corpos em barril no encéfalo murino.....	<b>21</b>

## Lista de Tabelas

<b>Tabela 1:</b> Resumo dos Resultados Observados.....	<b>48</b>
--	-----------

## 1. INTRODUÇÃO

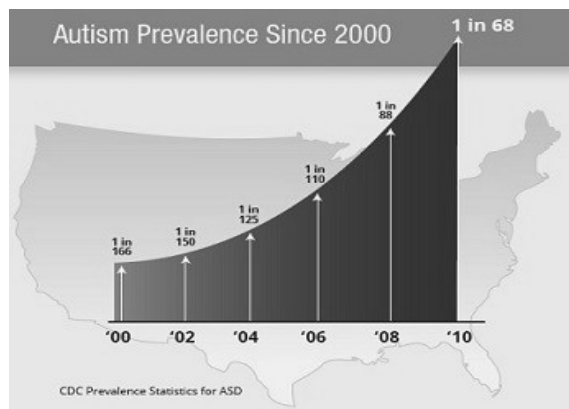
### 1.1 Transtorno do Espectro Autista

O Transtorno do Espectro Autista (TEA) é uma desordem do neurodesenvolvimento caracterizada atualmente, segundo o DSM-5, por uma tríade comportamental composta por:

- 1) Comportamentos repetitivos ou estereotipados;
- 2) Déficits de comunicação e interação social.

Historicamente, o termo “autismo” foi utilizado pela primeira vez pelo cientista Paul E. Bleuler em 1911 (ASHOK *et al.*, 2012), sendo posteriormente descrito em maiores detalhes pelo estudo de 11 crianças realizado por Leo Kanner (KANNER *et al.*, 1943) e, na sequência, por Hans Asperger (ASPERGER *et al.*, 1944) – bases históricas do conhecimento atual sobre o transtorno.

Os dados epidemiológicos demonstram um aumento significativo na prevalência do transtorno ao longo dos anos – fato explicado somente em parte pela migração de diagnósticos em decorrência das alterações do DSM-V (FOMBONNE *et al.*, 2009), demonstrando a necessidade crescente de ampliação das pesquisas para entendimento dos fatores relacionados ao desenvolvimento do autismo. Segundo dados de 2010 do Centro de Controle de Prevenção de Doenças dos EUA (CDC) a prevalência atual do Transtorno é de 1:68 crianças com 8 anos de idade, sendo cinco vezes mais prevalente entre indivíduos do sexo masculino. No Brasil, o único estudo epidemiológico piloto realizado ocorreu na cidade de Atibaia (RIBEIRO *et al.*, 2007), sendo a prevalência identificada de aproximadamente 0,3% - porém o dado obtido provavelmente não corresponde à realidade brasileira, já que, por exemplo, o tamanho amostral era muito reduzido para poder indicar dados consistentes sobre a prevalência do transtorno.



**Figura 1:** Aumento na prevalência do Transtorno do Espectro Autista nos EUA entre os anos 2000 e 2010.

Apesar dos amplos estudos sobre o tema, a etiologia do TEA ainda não foi propriamente elucidada, porém já se sabe que tanto fatores genéticos quanto ambientais (além de suas interações) são essenciais para a determinação do fenótipo identificado em cada indivíduo (GOTTFRIED *et al.*, 2015). Estudos envolvendo gêmeos indicam uma alta herdabilidade do transtorno (alcançando valores superiores a 90% de concordância em gêmeos monozigóticos) – demonstrando um importante aspecto genético (EL-FISHAWY *et al.*, 2010), porém diversos fatores ambientais importantes já foram descritos, tais como a utilização de talidomida, álcool, e ácido valproico durante a gestação (DIETERT *et al.*, 2011).

A presença de uma ampla diversidade de sintomas, além da heterogeneidade entre os indivíduos e ausência de biomarcadores validados torna o diagnóstico complexo, demandando uma equipe multidisciplinar para correta identificação das características comportamentais associadas ao transtorno. Além da tríade supracitada, alguns outros sintomas incluem alterações gastrointestinais, distúrbios do sono, agressividade, epilepsia e ansiedade (MANNION A *et al.*, 2013).

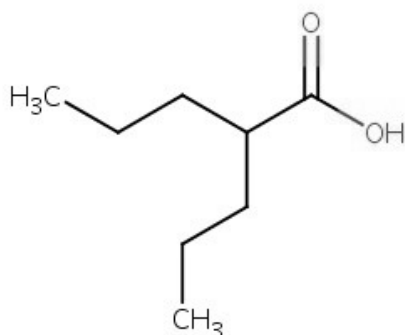
Um dos aspectos mais importantes associados com o TEA são as alterações no processamento e integração dos estímulos sensoriais (que chegam a afetar mais de 90% dos indivíduos com o transtorno), condições que acabam trazendo grande prejuízo na qualidade de vida (GESCHWIND *et al.*, 2009). Os exemplos mais comuns dessas alterações (já identificadas em humanos e modelos animais) incluem hiper-responsividades a estímulos sonoros, táteis e visuais, hiporresponsividade a estímulos nocivos e preferência restrita por determinado

padrão de estímulo, além de déficits na integração sensorial (DIETERT *et al.*, 2011). Ainda que muitas teorias tenham sido estabelecidas a fim de explicar esse aspecto do transtorno, diversos âmbitos do processamento sensorial no TEA ainda permanecem, em sua maioria, desconhecidos.

## 1.2 Ácido Valproico

O ácido valproico é um fármaco amplamente utilizado atualmente no tratamento de epilepsia, enxaqueca, dor neuropática e transtornos de humor, porém sua administração durante o período gestacional está associada ao desenvolvimento de algumas desordens como a Síndrome Fetal do Valproato e o Transtorno do Espectro Autista (CHRISTENSEN *et al.*, 2013) – ambas com consequências deletérias para o neurodesenvolvimento.

Historicamente, o ácido valproico foi sintetizado pela primeira vez em 1882, sendo utilizado como solvente para líquidos lipofílicos (BURTON *et al.*, 1882). Posteriormente, em 1962, um grupo de cientistas que realizava testes com derivados da substância kelina verificou que o veículo do composto apresentava, por si, efeito anticonvulsivante (LÖSCHER *et al.*, 1999), consagrando o uso moderno do ácido valproico.



**Figura 2:** Representação da estrutura molecular do ácido valproico. Fórmula molecular:  $C_8H_{16}O_2$   
Peso molecular: 144.214 g/mol. A característica lipofílica do VPA permite sua passagem pela barreira hematoencefálica e pela barreira placentária.

As investigações sobre potenciais efeitos adversos do ácido valproico

demonstraram, primeiramente, sua característica teratogênica relacionada ao desenvolvimento da Síndrome Fetal do Valproato. A descrição das características dessa alteração inclui malformações em ossos cranianos, atraso no desenvolvimento psicomotor, estrabismo e outros sintomas (DILIBERTI *et al.*, 1984). Assim, estabeleceu-se a necessidade de ampliar o controle da dose e avaliar o custo/benefício da utilização do fármaco durante o período gestacional.

A relação entre utilização de ácido valproico e Transtorno do Espectro Autista passou a ser bem descrita e consolidada em um estudo realizado na Dinamarca que avaliou todos os nascidos vivos entre 1996 e 2006 (CHRISTENSEN *et al.*, 2013). Nesse trabalho, verificou-se que o uso de ácido valproico durante a gravidez, principalmente no primeiro trimestre gestacional, aumentava significativamente o risco de desenvolvimento de autismo nos filhos. Apesar de diversas hipóteses terem sido propostas, ainda não se sabe exatamente como o ácido valproico acaba induzindo as alterações que resultam nessa desordem neuropsiquiátrica, de forma que a ampliação dos estudos (em modelos animais, por exemplo) é essencial para trazer clareza sobre as vias etiológicas do TEA.

### **1.3 Modelo Animal**

Os modelos animais, de forma geral, são ferramentas importantes no estudo de diversas patologias e desordens. Dentro desse contexto, algumas validades identificadas por Paul Wilner em seus estudos de depressão (WILLNER *et al.*, 1984) podem ser expandidas para modelos de outras desordens neuropsiquiátricas a fim de garantir consistência na translacionalidade entre comportamento humano e animal, sendo elas:

- 1) Validade de Face:** replicação, em animais, de características ou sintomas ligados à desordem;
- 2) Validade de Construto:** os fatores de risco que levam às alterações em humanos também devem realizar o mesmo em animais;
- 3) Validade Preditiva:** a resposta obtida em humanos com a desordem a alguma intervenção (medicação, por exemplo) deve ser semelhante nos animais.

No contexto do TEA, o modelo animal baseado na exposição pré-natal ao ácido valproico teve início em 1996, quando um estudo demonstrou que essa intervenção, em ratos, causava alterações no cerebelo e no tronco encefálico semelhantes às descritas em pacientes com autismo (RODIER *et al.*, 1996). A partir daí, o modelo passou a ser validado e amplamente explorado no estudo do TEA e em 2005 foi realizada a primeira descrição de comportamentos associados ao autismo (déficits sociais, comportamentos estereotipados) em animais expostos ao VPA, consolidando o modelo animal (SCHNEIDER *et al.*, 2005).

Atualmente, existem diversos modelos animais de TEA, incluindo os baseados na exposição a fatores de risco ambiental como o ácido valproico e os desenvolvidos a partir de alterações genéticas tais como modificações no gene codificante da proteína SHANK3 (SPEED *et al.*, 2015) e mutações nos genes codificantes de neuroliquinas e neuroxinas (SHINODA *et al.*, 2013). Apesar de não haver um modelo que replique com total fidelidade as características do transtorno em humanos, os modelos animais são essenciais para seu estudo, já que permitem análises bioquímicas, fisiológicas e comportamentais em grande escala, além serem mais facilmente replicáveis e acessíveis.

#### **1.4 Desequilíbrio Excitatório-Inibitório e Alterações Sensoriais**

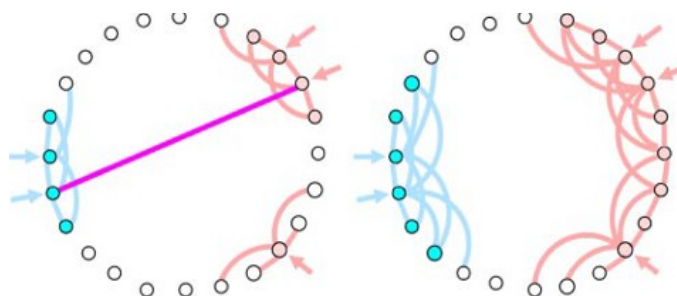
Uma das hipóteses mais abordadas em relação ao desenvolvimento e consolidação das características do Transtorno do Espectro Autista se refere às alterações eletrofisiológicas, principalmente no desequilíbrio entre o delicado balanço excitatório-inibitório (E/I) em algumas estruturas encefálicas. A presença de epilepsia ou episódios de convulsão em aproximadamente 1/3 dos indivíduos com TEA (SPENCE *et al.*, 2009) é uma das evidências mais consolidadas da associação do transtorno com esse tipo de desequilíbrio eletrofisiológico, além disso, patologias como Esclerose Tuberosa, que possuem o autismo como comorbidade frequente (20%–60% dos pacientes (NUMIS *et al.*, 2011)) também compartilham da alta taxa de alterações eletrofisiológicas, porém as relações de causa e efeito ainda não foram propriamente identificadas.

Os desequilíbrios elétricos identificados no TEA são de grande importância não só para o diagnóstico de comorbidades como também para entendimento geral



dos comportamentos apresentados pelos indivíduos com o transtorno. A descrição de uma ausência de “coerência central”, ou seja, falta da capacidade de integrar itens formando um todo coerente é descrita em pacientes com autismo desde a década de 1980 (FRITH *et al.*, 1989), porém apenas recentemente estudos passaram a buscar compreender mais essa alteração na conectividade sob ponto de vista eletrofisiológico.

A presença de alta conectividade local associada à hipoconectividade em regiões encefálicas distantes (BELMONTE *et al.*, 2004) já comprovada através de estudos com ressonância magnética funcional (fMRI) em pacientes com autismo (CLERY *et al.*, 2013) é umas das evidências mais consolidadas para demonstrar os problemas associados à integração de estímulos, visuais, táteis, auditivos e outros. Nesse contexto, supõe-se que haja uma compensação geral baseada no aumento isolado da percepção de cada estímulo uma vez que a coerência é prejudicada, de forma que o resultado final pode ser percebido como a ausência de um “filtro” sensorial – situação observada em alguns indivíduos com TEA, onde estímulos não nocivos acabam causando grande sofrimento.



**Figura 3:** à esquerda, observa-se uma representação da conectividade usual entre regiões do encéfalo, de forma que a integração é rapidamente realizada e facilmente conduzida. À direita, observa-se a representação da conectividade alterada presente no TEA, onde a dificuldade de integração supostamente aumenta a percepção do estímulo primário. (imagem adaptada de BELMONTE *et al.*, 2004).

A neurotransmissão glutamatérgica e GABAérgica é outro fator de grande importância dentro da eletrofisiologia do autismo, sendo o predomínio disfuncional da ação glutamatérgica sobre a GABAérgica uma das hipóteses mais frequentes para explicar o desequilíbrio entre excitação e inibição (RUBENSTEIN *et al.*, 2003). Esse conceito, apesar de ser simplificação geral, já que diversos microcircuitos

possuem suas próprias formas de estabelecer esse equilíbrio para realizarem suas funções corretamente, representa a ideia geral da “ausência de filtro” que acaba deturpando a percepção sensorial.

A ampliação de estudos abordando os neurotransmissores-chave no balanço elétrico do encéfalo só foi possível através da utilização de modelos animais, principalmente pela possibilidade do controle e padronização dos experimentos. Em nível genético, estudos com animais nocaute possibilitaram uma análise isolada do impacto das alterações sinápticas. Dentre os achados mais relevantes, destaca-se o realizado com modelo animal de Síndrome de Dravet (HAN *et al.*, 2012), onde os animais heterozigotos para o gene que codifica a subunidade Scn1a de canais de sódio presentes em neurônios GABAérgicos apresentam comportamentos do tipo autista possivelmente associados com a falha na ação dessas células, já que a retomada farmacológica da ação GABAérgica foi capaz de reverter a mudança comportamental – interessante, esse tipo de canal iônico é encontrado em diversos interneurônios corticais, incluindo os positivos para parvalbumina e somatostatina (KEARNEY *et al.*, 2015), indicando o papel crucial dessas células na regulação do equilíbrio E/I. Além disso, em modelos animais de síndrome de Rett (também intimamente associada com o TEA), onde é realizada deleção de gene que codifica a proteína Mecp2 já observou-se, juntamente com alteração comportamental tipo autista, redução na síntese de enzimas da rota de produção de GABA, além de perda substancial do potencial inibitório (NELSON *et al.*, 2015).

Outros aspectos associados à desorganização da arquitetura cerebral identificados em modelos também corroboram a ideia geral de desequilíbrio eletrofisiológico. Já foi demonstrada a perda do padrão organizacional das minicolunas no neocórtex (CASANOVA *et al.*, 2015), inclusive em regiões associadas à percepção sensorial, como o córtex sensorial primário (dados não publicados), indicando que, possivelmente, a alteração no posicionamento dos interneurônios nesses locais possa resultar em queda no refinamento do processamento sensorial.

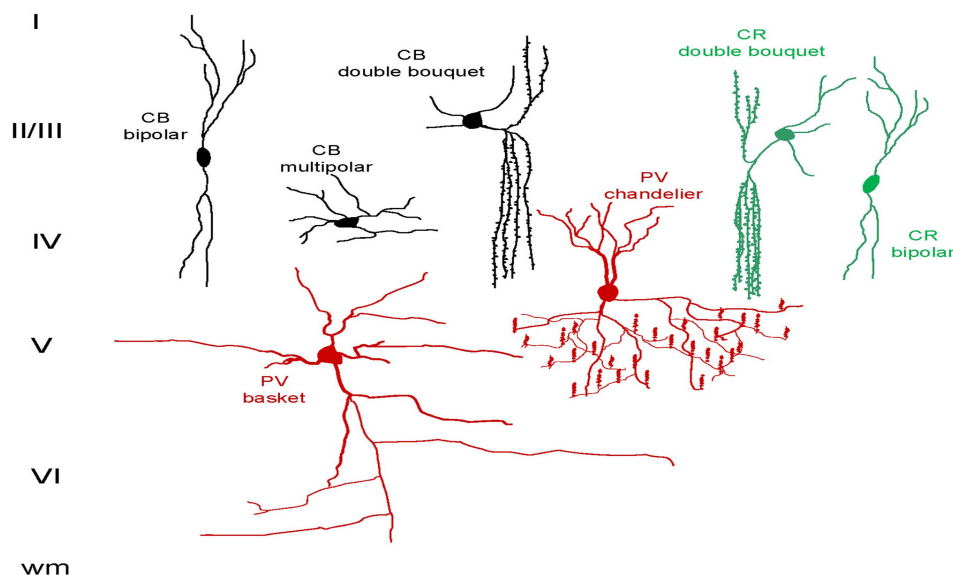
Os estudos realizados em humanos corroboram muitos dos achados em modelos animais: estudos post mortem demonstram redução nos níveis das enzimas GAD65/GAD67 (essenciais para a conversão de glutamato em GABA) no córtex parietal e cerebelo de indivíduos com o autismo (FATEMI *et al.*, 2002), além

de outras alterações como redução na expressão dos receptores GABAA (FATEMI *et al.*, 2009) and GABAB (OBLAK *et al.*, 2010).

Observando o todo demonstrado pelas evidências citadas é possível verificar uma questão central voltada para os problemas de conectividade e desequilíbrios eletrofisiológicos, indicando uma possível via na busca do entendimento das questões relacionadas aos déficits sensoriais identificados no TEA.

### 1.5 Neurônios GABAérgicos positivos para parvalbumina

Os interneurônios são células essenciais para promover organização, ritmicidade e filtro na transmissão de estímulos elétricos, possibilitando a correta interpretação das inúmeras aferências sensoriais que ocorrem a todo momento. Dentre os diversos tipos de interneurônios (RAGHANTI *et al.*, 2010) (normalmente identificados pela expressão de alguma molécula proteica específica como somatostatina, calretinina, calbindina e etc.) destacam-se os neurônios positivos para parvalbumina (PV+), que correspondem a 40% dos interneurônios presentes no córtex.



**Figura 4:** Representação da organização de diversos interneurônios no neocórtex. Em vermelho estão representados os dois tipos de neurônios PV+, diferenciados por sua morfologia: “basket cell” e “chandelier cell”. Deve-se notar a presença de grande quantidade de contatos sinápticos na célula chandelier, característica essencial para o desempenho de suas funções (de

RAGHANTI et al, 2010).

Os neurônios PV+ são gerados na porção medial da Eminência Gangliônica (KELSOM *et al.*, 2013), estrutura presente durante a embriogênese e, partir daí, iniciam sua migração para diversas regiões do encéfalo, incluindo o córtex, no dia embrionário 12,5 em roedores (MARÍN *et al.*, 2003). Existem diversos fatores de transcrição, receptores e outras moléculas envolvidas nesse processo, de forma que alterações pontuais podem acabar prejudicando muito o processo.

Apesar de diversos estudos descreverem alterações na migração de neurônios GABAérgicos dentro do TEA, ainda não há relatos de mudanças associadas especificamente à migração dos neurônios PV+. Em outras desordens como a esquizofrenia, entretanto, há mais dados sobre o tema: já se observou a redução de Lhx6 e Sox6 (VOLK *et al.*, 2012) fatores de transcrição relacionados com desenvolvimento e migração dos PV+, em análises post mortem, além de reduzida capacidade de síntese por essas células de GAD67, levando à falha na função GABAérgica (VOLK *et al.*, 2014).

Outro fator importante associado aos neurônios PV+ é a sua capacidade de estabelecer um ritmo de ondas gama no encéfalo. Essa habilidade é proporcionada pela presença de sinapses elétricas entre os PV+ (SOHAL *et al.*, 2009), promovendo rápida sincronização e pela característica de disparo rápido dessas células, essencial para gerar as condições necessárias para a ocorrência de ritmos gama. Um ponto importante associado a esse padrão de ondas é a sua relação com diversos fatores como memória, atenção e, principalmente, integração de estímulos através da conectividade de diversas regiões do encéfalo (JIANG *et al.*, 2011). Já foi observado que a inativação seletiva dos neurônios PV+ induz uma desorganização severa da circuitaria cortical (GALARRETA *et al.*, 2001), indicando mais uma função importante dessas células e demonstrando a necessidade de ampliação de estudos que possam avaliar esse característica específica em desordens como o autismo.

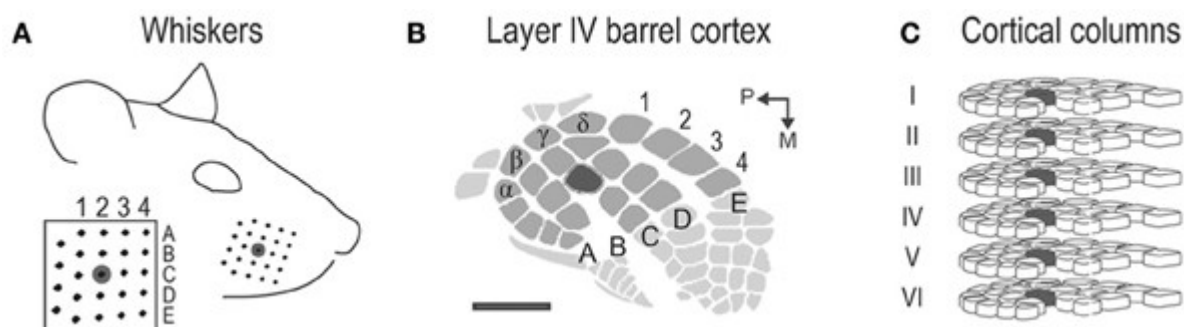
No Transtorno do Espectro Autista, apesar de existirem dados extensos sobre neurotransmissão GABAérgica, há poucas evidências sobre os neurônios PV+, principalmente em suas etapas iniciais como origem e migração. Os principais trabalhos demonstram, por exemplo, redução de PV+ no córtex pré-frontal medial em análises post mortem (HASHEMI *et al.*, 2016) e em hipocampo, córtex cingulado

anterior e córtex pré-límbico de modelos animais. Outras descrições de alteração englobam os PV+ juntos com outros neurônios, demonstrando os problemas de conectividade classicamente associados ao autismo. Assim, é necessário buscar entender mais o papel dessas células no autismo de forma semelhante ao que já vem sendo feito com a esquizofrenia.

### **1.6 Área Somatossensorial Primária**

A percepção de estímulos sensoriais é essencial para diversos aspectos da sobrevivência dos seres vivos, pois possibilita uma ampla interpretação do ambiente externo e interno onde estão inseridos. Ao longo da evolução diversas especializações ocorreram no sentido de aprimorar a função de regiões específicas no encéfalo, gerando, por exemplo, a Área Somatossensorial Primária, região responsável pelo processamento de estímulos sensoriais somáticos (dor, tato, temperatura e propriocepção). Em humanos, essa região é situada no giro pós-central, correspondendo às Áreas de Brodmann 1, 2 e 3, enquanto em roedores não há uma delimitação anatômica bem definida, porém a identificação pode ser realizada de maneira simples através da utilização de atlas padronizados (PAXINOS *et al.*, 1997).

Alguns roedores possuem uma organização peculiar da Área Somatossensorial Primária denominada “corpos em barril” (CHEN-BEE *et al.*, 2012) destinados exclusivamente para o processamento tátil proveniente dos movimentos das vibrissas. Essa especialização é essencial para esses animais, que exploram seu ambiente majoritariamente através do movimento dessas estruturas de forma que cada vibrissa é processada por um grupo específico de neurônios constituintes de um corpo em barril. Esse mapeamento somatotópico pode ser visualizado através de técnicas de coloração (principalmente quando é realizada a marcação da enzima citocromo c oxidase) e fornece grandes informações sobre a qualidade do processamento sensorial desses animais.



**Figura 5:** Representação do refinado processamento cortical destinado a cada uma das vibrissas do animal nos campos em barril (de CHEN-BEE et al, 2012).

No contexto do Transtorno do Espectro Autista, as alterações sensoriais são componente importante no cotidiano dos indivíduos, porém os estudos avaliando possíveis regiões envolvidas ainda são incipientes. Em animais, uma das formas mais promissoras de observar essas modificações é através dos testes comportamentais, tais como avaliação do limiar nociceptivo, resposta a estímulos táteis não nocivos e discriminação olfatória. Nos modelos animais de autismo já foi observada, por exemplo, redução no limiar nociceptivo (hiporresponsividade ao estímulo doloroso), característica encontrada em humanos com o transtorno, além de falhas em neonatos na diferenciação de odores conhecidos (maravalha do ninho materno) de odores neutros (maravalha limpa) (SCHNEIDER *et al.*, 2005).

Em indivíduos com autismo, há evidências de alteração no córtex somatossensorial, incluindo alterações na organização somatotópica de regiões associadas aos dedos e à face (COSKUN *et al.*, 2009), indicando uma possível desorganização na rede neuronal local. Além disso, diversos outros estudos envolvendo exames de imagem já demonstraram déficits em regiões corticais associadas à audição (GOMOT M *et al.*, 2008), inclusive com descrições de alterações em nível de neurônios PV+ no córtex auditivo primário (ANOMAL *et al.*, 2015) e visão (CLERY H *et al.*, 2016), por exemplo.

Modificações na citoarquitetura envolvendo especificamente a Área Somatossensorial Primária já foram descritas no modelo animal de autismo induzido por VPA e incluem alterações na celularidade, principalmente no conteúdo de neurônios GABAérgicos da camada V e na organização de minicolumnas (dados não publicados do grupo). Futuros estudos avaliando aspectos eletrofisiológicos dessa

região associados a testes comportamentais serão capazes de fornecer informações importantes no entendimento do papel da Área Somatossensorial Primária no TEA.

### **1.7 Região da Amígdala**

O sistema límbico é um conjunto de estruturas encefálicas situadas no telencéfalo e diencefalo, responsáveis pelo processamento de emoções e comportamentos sociais. Uma das regiões mais estudadas nesse sistema é a amígdala, que possui papel fundamental em diversos aspectos como formação de memórias emotivas associadas à olfação e à gustação, desenvolvimento de memórias condicionadas por medo, interação social e integração de estímulos sensoriais – demonstrando o papel chave dessa região no processamento sensorial aplicado às relações sociais (RAJMOHAN V *et al.*, 2007).

Diversas desordens neuropsiquiátricas de grande prevalência apresentam alterações importantes na amígdala tais como distúrbios de ansiedade (ZALLA *et al.*, 2013), esquizofrenia (SHIN *et al.*, 2010), Transtorno do Espectro Autista (MIER *et al.*, 2014) e outras. No TEA especificamente, uma das primeiras evidências interessantes é a alta porcentagem de indivíduos que possuem ansiedade como comorbidade (cerca de 40%), já que as alterações na amígdala estão intimamente relacionadas ao medo e ao comportamento do tipo ansioso (VAN STEENSEL *et al.*, 2011). Além disso, estudos realizados com ressonância magnética funcional indicam respostas atípicas dessa região a um treinamento de condicionamento por medo em humanos (TOP *et al.*, 2016).

Outros aspectos importantes identificados em pacientes com TEA são as alterações a nível estrutural, incluindo aumento no peso relativo da amígdala (ECKER *et al.*, 2015) e hiperativação bilateral antecipadamente ao contato social (DICHTER *et al.*, 2012), indicando que um possível desequilíbrio excitatório-inibitório nesse local possa estar atuando como fator determinante para as alterações comportamentais identificadas.

Em modelos animais, a realização de testes comportamentais associados à ansiedade fornecem dados interessantes que podem ser associados de certa forma com a função da amígdala. Nos modelos de autismo já se observou, por exemplo, através do teste de labirinto em cruz elevado, que há um aumento geral na

ansiedade (identificado pela permanência do animal majoritariamente nos braços fechados do aparato). Avaliações eletrofisiológicas já demonstraram uma sobreposição do componente excitatório em relação ao inibitório principalmente em no núcleo lateral (LIN *et al.*, 2013), sendo essencial a ampliação de estudos para estabelecer as relações de causa e efeito nessas alterações.

A integração sensorial nessa região é essencial para a formação de memórias associadas a estímulos como, por exemplo, o desenvolvimento de comportamento de vínculo entre mãe e prole neonata (MORICEAU *et al.*, 2005) a partir da associação do aroma, texturas e sons presentes no ambiente ou a formação de memória aversiva a partir da ocorrência de algum evento traumático. Todas essas alterações são de suma importância para o estudo do TEA, já que possivelmente as alterações sensoriais presentes podem acabar trazendo modificações nas formas de processar e interpretar as relações sociais.



## **2. JUSTIFICATIVA**

Observando-se os diversos prejuízos na qualidade de vida associados ao Transtorno do Espectro do Autismo, além da crescente prevalência da desordem e relativa ausência de tratamentos específicos, se faz necessário ampliar os estudos com enfoques em alterações celulares e modificações moleculares com possíveis reflexos comportamentais a fim de expandir a compreensão do TEA, promovendo mudanças positivas, em último nível, no panorama geral dos indivíduos afetados.

### **3. OBJETIVOS**

#### **3.1 OBJETIVOS GERAIS**

Avaliar na Área Somatossensorial Primária e na Região da Amígdala, organização celular e distribuição de neurônios GABAérgicos positivos para parvalbumina em ratos Wistar de 30 dias pós natal, no modelo animal de autismo induzido por exposição pré-natal ao ácido valproico.

#### **3.2 OBJETIVOS ESPECÍFICOS**

**1)** Quantificar neurônios totais, células não neuronais e neurônios PV+ na Região da Amígdala e na Área Somatossensorial Primária;

**2)** Avaliar a distribuição dos neurônios PV+ nas camadas da Área Somatossensorial Primária;

**3)** Avaliar a organização das camadas corticais e possível comprometimento da organização colunar na Área Somatossensorial Primária.

## 5. TRABALHO EXPERIMENTAL NA FORMA DE ARTIGO CIENTÍFICO

A ser submetido no periódico Neuroscience

### ANALYSIS OF PARVALBUMIN-POSITIVE GABAERIC NEURONES IN SENSORY AREAS IN THE ANIMAL MODEL OF AUTISM INDUCED BY PRE-CHRONIC EXPOSURE TO VALPROIC ACID

Júlio Santos Terra Machado <sup>a,b,c</sup>, Mellanie Fontes Dutra da Silva <sup>a,b,c</sup>, Mauro Mozael Hirsch<sup>a,b,c</sup>, Carmem Gottfried <sup>a,b,c\*</sup>

<sup>a</sup> Research Group in Neuroglial Plasticity at Federal University of Rio Grande do Sul, Porto Alegre, Rio Grande do Sul, Brazil.

<sup>b</sup>Department of Biochemistry, Institute of Health's Basic Science at Federal University of Rio Grande do Sul, Porto Alegre, Rio Grande do Sul, Brazil

<sup>c</sup>Translational Research Group in Autism Spectrum Disorders (GETEA) at Federal University of Rio Grande do Sul, Porto Alegre, Rio Grande do Sul, Brazil

\*Correspondence address: Carmem Gottfried, Departamento de Bioquímica, Instituto de Ciências Básicas da Saúde, Universidade Federal do Rio grande do Sul, Rua Ramiro Barcelos 2600, anexo, 90035-003, Porto Alegre, RS, BRAZIL, fax: +55 513308 5551. Email address: cgottfried@ufrgs.br

## **ABSTRACT**

Autism Spectrum Disorder is a high prevalent neurodevelopmental disorder characterized by impairments in communication and social interaction in addition to repetitive or stereotyped behaviors. Another important aspect for ASD - present in more than 90% of the individuals - is the sensory alterations, which cause great loss in life quality. In this study, we used the already consolidated and validated animal model of autism induced by prenatal exposure to valproic acid (VPA) in order to evaluate quantity and distribution of parvalbumin-positive GABAergic interneurons in two sensory related regions: Primary Somatosensory Area and Amygdala Region. The analysis was made by immunofluorescence (DAPI, NeuN and Parvalbumin) of brain slices identified with Paxinos Atlas from 30 days old male animals in two groups: control and VPA. The images were obtained by confocal microscopy and processed using Cell Counter plug-in from ImageJ software. In Primary Somatosensory Area, VPA group exhibited alterations in laminar organization and significant reduction in the number of non-neuronal cells in the layer IV-V – indicating impairments in glial cells, moreover, PV+ cells quantity and density were significant reduced in layer IV-V and increased in layer II-III, demonstrating a possible impairment in migrations between layers since the data from the same parameters considering all the layers together didn't showed differences. In amygdala region, both quantity and density of PV+ were reduced in VPA, demonstrating again the loss of an important inhibitory component, probably causing an excitatory/inhibitory imbalance that reflects on behavioral alterations.

*Key words:* ASD, VPA, Animal Model, Sensory, Parvalbumin, Immunofluorescence, Primary Somatosensory Area, Amygdala Region.

*Highlights:* ► Animal model of autism induced by prenatal exposure to valproic acid (VPA) ► Quantitative analyzes of non-neuronal cells, total neurons and PV+ neurons in Primary Somatosensory Area (PSSA) and Amygdala Region (AMR) ► PV+ cells distribution altered in cortical layers of PSSA and in AMR in VPA group ► Possible impairment in migration of interneurons ► Connectivity alterations in autism ► Excitatory/Inhibitory Imbalance in sensory related regions.

## INTRODUCTION

Autism Spectrum Disorder (ASD) is a high prevalent neurodevelopmental disturb (1:68 children aged 8 years in USA) characterized, according to DSM-V, by a behavioral dyad:

- 1) Impairments in communication and social interaction;
- 2) Repetitive or stereotyped behaviors.

Although many studies have been proposing interesting theories, the ASD etiology remains unknown and, in addition to that, the lack of a validated biomarker allied to the difficulty of finding proper treatments turns autism into a big challenge for all the individuals affected by this disorder.

Many factors involved with autism have already been described: genetic background can be demonstrated by the high agreement of ASD development in monozygotic twins (reaching values of up to 90%) (DIETERT *et al.*, 2011), while in dizygotic twins the heritability reaches the value of 10% (CASANOVA *et al.*, 2006). Moreover, some environmental factors are also being related with autism, like the use of alcohol, thalidomide and valproic acid during pregnancy – this last one has shown important increase in the risk of autism in the children whose mothers took valproic acid, especially in the first trimester of gestation (CHRISTENSEN *et al.*, 2013).

Besides the classic features associated with autism, one of the most important alterations are the sensory impairments, identified in more than 90% of individuals with ASD (GESCHWIND *et al.*, 2009). The most common deficits include hyper-responsiveness to non-harmful stimuli (e. g., visual, tactile and auditory) and hypo-responsiveness to harmful stimuli. Although these alterations bring great impairment in life quality, little is known about how the sensory stimuli are processed and integrated in ASD patients.

Another characteristic identified in ASD is the excitatory/inhibitory imbalance, observed in clinical terms by the high prevalence of epilepsy in individuals with autism (1/3 of the patients) (SPENCE *et al.*, 2009). Along with that, many studies with animal models and humans have been describing several alterations in connectivity and electrical features in neurons of different brain regions. One of the most interesting discoveries about the pattern of connectivity in the ASD brain, made using

fMRI, showed an increase in the local connections and a deficit in “long distances” connections between different regions of the brain (BELMONTE *et al.* 2004), suggesting a possible explanation for the deficits in the integration of stimuli. Therefore, the content and organization of excitatory and inhibitory components along neuronal circuits may be a key factor in the establishment of some behavioral peculiarities found in ASD especially in areas related to sensory functions as Amygdala and Primary Somatosensory Area.

Interneurons have a major role in the circuits of the brain, acting as switches and pattern generators, providing refinement to the countless connections present in the brain. The positive parvalbumin GABAergic neurons are the most common interneurons in the cortex (40% of the total interneuron population) (XU *et al.*, 2010) and they demonstrate important participation in synchronization of rhythms, memory, attention and integration of different sensory areas. The study of these neurons in schizophrenia showed important evidences of alteration in migration and distribution, however in ASD studies are still incipient. In view of all the previous evidence, the goals of this study are quantify and analyze the organization of PV neurons in Amygdala Region (RAM) and Primary Somatosensory Area (PSSA). Non-neuronal cells exhibited significant reduction in PSSA of VPA model and PV+ cells showed complex patterns of density alterations in PSSA (increase density in layer II-III and reduction in layer IV-V in VPA) and in RAM (decrease in VPA model). Moreover, cortical columnar organization seemed to be very impaired and disrupted. The data suggested a major action of VPA in sensory related areas, altering neuronal networks and excitatory/inhibitory balance – alterations that may underlie the great amount of sensory deficits identified in individuals with ASD.

## **EXPERIMENTAL PROCEDURES**

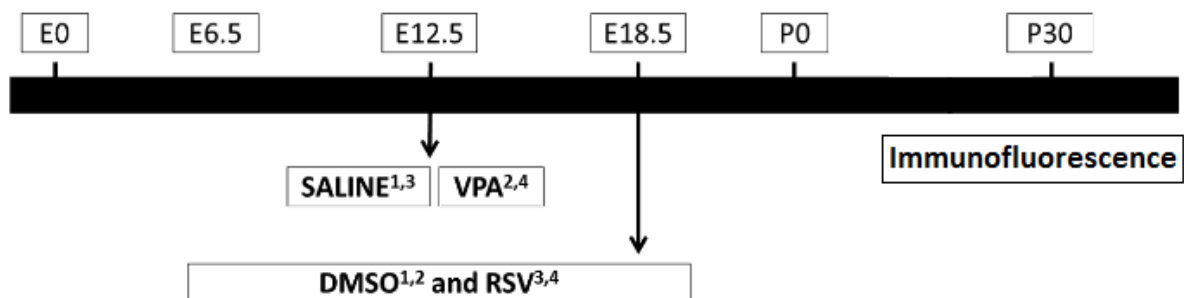
### **Animals**

Wistar rats were obtained from the facilities of HCPA (Hospital de Clínicas de Porto Alegre) and Biochemistry Department – ICBS (Instituto de Ciências Básicas da Saúde) and maintained according to the following conditions: 12:12 light cycle (lights on at 7:00 and lights off at 19:00), controlled temperature ( $22\pm 1^{\circ}\text{C}$ ) and water and food *ad libitum* – in line with the recommendations of Ethics Committee in Animals

Use (CEUA).

The animals were mated overnight and the confirmation of fertilization was made in the following morning by the visualization of spermatozoa in the vaginal smear (embryonic day 0). Females of VPA group received a single intraperitoneal injection of VPA (600 mg/kg, 250 mg/ml diluted in NaCl 0.9%) in the 12.5th day of (BAMBINI-JUNIOR *et al.*, 2011; SCHNEIDER *et al.*, 2005), during the days E6.5-E18.5 the females also received subcutaneous injections of vehicles (saline 0.9% and DMSO 3.6mg/kg). The justification for using DMSO (RSV vehicle) is based on our research lab strategy of using Resveratrol (RSV) as a prenatal treatment to evaluate possible pathways related to autism. In this case, for a matter of time and monograph structure, only two groups were used (Control-DMSO and VPA), but the work is part of a bigger project that soon will be completed with the other groups.

1: Control (DMSO) 2: VPA 3: RSV 4: RSV+VPA



**Image 1:** timeline of experiment with all groups demonstrated. In this work, however, only the first two groups (Control-DMSO and VPA) were used according to previous justificatives.

Females were housed individually and were allowed to raise their own litters. The offspring rats were separated by sex at P21. Male pups at P30 (n=3,4) were anaesthetized (75 mg/kg ketamine + 10 mg/kg xylazine) and perfused transcardiacally with 0.9%-NaCl solution followed by first 1,5%-paraformaldehyde and after 4%-paraformaldehyde solution before the removal of their brain. In order to perform immunofluorescence analysis, the brains were preserved in Tissue-Tek® and kept in -80°C ultrafreezer. It were used 12 animals from different litters, being 6 control and 6 VPA.

The project was approved by CEUA-HCPA with the protocol number 140367.

### **Parvalbumin and NeuN immunofluorescence**

Before freezing in the ultrafreezer, brains are post-fixed during 4 hours in a 4%-paraformaldehyde solution and were subsequently prepared for freezing in 15% and 30%-sucrose PBS solutions until completely submersion.

Coronal brain slices (25 $\mu$ m) were obtained in  $-20^{\circ}\text{C}$  cryostat (Leica Microsystems GmbH) using a rat brain atlas (PAXINOS *et al.*, 1997) to identify the sections containing primary somatosensory area and amygdala regions. The slices were arranged in microscopy slides covered with poly-L-lysine to improve fixation.

Slices were exposed to the following steps: 1) final tissue fixation with 4%-paraformaldehyde (10 minutes); 2) 3 washes with PBS 0.1M buffer (5 minutes each); 3) permeabilization with PBS-Triton 0.1% (10 minutes); 4) 3 washes with PBS 0.1M buffer (5 minutes each); 5) antigen re-exposure in citrate buffer at  $60^{\circ}\text{C}$  (1 hour); 6) 2 washes with PBS-Triton 0.1% (5 minutes each); 7) blockage with PBS-Triton 0.1% BSA 5% (1 hour); 8) Incubation with primary antibodies (PV anti-mouse Sigma-Aldrich® (P3088) and NeuN Abcam® anti-rabbit (ab104225) – both diluted to 1:500 in blockade solution) for 48h at  $4^{\circ}\text{C}$ ; 9) 5 washes with PBS 0.1M buffer (3 minutes each); 10) incubation with secondary antibodies (AlexaFluor 488 Abcam® (ab150077) anti-mouse and Alexa Fluor 546 Invitrogen® (A-11030) anti-rabbit - both diluted to 1:2000 in blockade solution) for 2h at room temperature; 11) 5 washes with PBS 0.1M buffer (3 minutes each); 12) incubation with DAPI solution (10 minutes); 13) final 5 washes with PBS 0.1M buffer (3 minutes each) followed by addition of mounting medium and coverslip.

Images were obtained in the confocal microscope (Olympus FluoView 4.0 Viewer) of Electronic Microscopy Center (CME-UFRGS) and cell types and fluorescence were analyzed using the Image J software with the Cell Counter plug-in. The number of parvalbumin positive neurons, total neurons and total cells were counted manually.

### **Statistical Analysis**

Data were analyzed in Graph Pad Prism 5 software using Student's T Test followed by Welch's correction and considering  $p < 0.05$  as statistically significant. The results are expressed as mean $\pm$ SD.



## RESULTS

### Primary Somatosensory Area (Figures 1, 2, 3, 4 and 5)

There was no difference between groups both in the quantity of total neurons in the layer II-III (Control:  $274,3 \pm 10,92$ ; VPA:  $265,0 \pm 30,04$   $p=0.7817$ ) and IV-V (Control:  $320,3 \pm 33,20$ ; VPA:  $335,5 \pm 41,81$   $p=0.7824$ ). The number of PV neurons showed difference only in the layer IV-V (Control:  $36,25 \pm 3,172$ ; VPA:  $24,58 \pm 1,287$   $p = 0.0270$ ).

Significant differences related to density of PV neurons were found in the layer II-III showing increased density in VPA group (Control:  $0,09319 \pm 0,006055$ ; VPA:  $0,1574 \pm 0,01342$   $p=0.0036$ ) and in the layer IV-V, in which the density was reduced in VPA group (Control:  $0,1147 \pm 0,008883$ ; VPA:  $0,03757 \pm 0,001790$   $p=0.0025$ ). No alteration was found when considering all the layers (Control:  $0,1047 \pm 0,003848$ ; VPA:  $0,1115 \pm 0,008866$   $p=0.5099$ ).

There was no difference between the groups in the quantity of non-neuronal cells in the layer II-III (Control:  $752,8 \pm 47,57$ ; VPA:  $659,3 \pm 38,49$   $p=0.1737$ ), while in the layer IV-V, VPA showed a significant reduction in relation to control group (Control:  $907,0 \pm 50,60$ ; VPA:  $717,6 \pm 31,20$   $p=0.0233$ ).

Cortical layer organization exhibited impairment in VPA group with disruption of the classic columnar structures when comparing to control group.

### Amygdala Region (Figures 6 and 7)

Significant difference was found in the total number of neurons demonstrating increase in VPA group (Control:  $221,8 \pm 41,35$ ; VPA:  $402,6 \pm 43,80$   $p=0.0265$ ). However, the number of PV neurons wasn't different between groups (Control:  $33,83 \pm 3,844$ ; VPA:  $24,20 \pm 3,813$   $p=0.1320$ ).

The density of PV neurons was significantly reduced in VPA group (Control:  $0,1593 \pm 0,02466$ ; VPA:  $0,05991 \pm 0,007587$   $p=0.0459$ ).

Non-Neuronal cells exhibited no differences between groups (Control:  $658,8 \pm$

138,4; VPA: 449,0±48,06 p=0.2648).

## DISCUSSION

The most interesting and challenging characteristic of ASD is its heterogeneity of behaviors, molecular patterns and biochemical parameters, so it's necessary to find points of convergence to better understand this disorder. One of the most common features related to ASD is the sensory impairment, present in more than 90% of the individuals (GESCHWIND *et al.*, 2009), so is very important to expand knowledge about it in animal models validated and consolidated. The previous presented data showed important alterations in animals from VPA model of autism in primary somatosensory area and amygdala, regions with major role in sensory processing and integration, demonstrating modifications in both non-neural and neural cells.

In the IV-V layer of Primary Somatosensory Area, glial cells appeared significantly reduced in the VPA group, suggesting a cell loss or an important impairment in the migration. Otherwise, the lack of proper glia function in this area may cause great imbalance in the local homeostasis since these cells are essential to synapse formation, neurotransmitter reuptake and recycle, myelination, formation and permeability regulation of brain blood barrier and many other functions (ZEIDN-CHULI *et al.*, 2014). Many evidences in ASD have been highlighting the central role of microglia and astrocytes in the development of disorder – microglial activation was reported in the brains of autistic children by positron emission tomography (SUZUKI *et al.*, 2013) and in the hippocampus of animal model of autism induced by VPA (LUCCHINA *et al.*, 2014). It's very likely that the pro inflammatory environmental induce not only alteration in microglia but also in astrocytes, leading to multiple outcomes like increase in the production of reactive oxygen species, deficits in metabolism neurotransmitters and enhancement of inflammatory mediators. (PETRELLI *et al.*, 2016) In the layer II-III of PsSA and in Amygdala, there was no significant differences in the number of non-neuronal cells, but it's very possible that some subpopulations are reduced and compensated by others, homogenizing the differences.

Neuronal quantity showed significant differences only in Amygdala, but many

studies in ASD demonstrated important alterations in subpopulations (TAKANO *et al.*, 2015), creating an imbalance that is not seen when observing all neurons as a whole. Our group verified in still unpublished data that GABAergic neurons are reduced in the PSSA of VPA animal model, besides that some studies also demonstrated loss of Purkinje cells in the cerebellum (WHITNEY *et al.*, 2008), reduction in the number of pyramidal neurons (CAMACHO *et al.*, 2013) and signals of neurodegeneration in amygdala (SCHUMANN *et al.*, 2006) – all of them obtained by post mortem analysis. So, in order to refine analysis we choose to quantify a specific subset of inhibitory interneurons related with several impaired characteristics in ASD: the parvalbumin positive neurons.

The task of organizing 86 billions of neurons and a similar number of glial cells (AZEVEDO *et al.*, 2009) is not trivial and requires specialized filters and countless checkpoints. One of the most interesting mechanisms to perform these adjustments are interneuron networks, which act from the most basic regulations like nociceptive flexion reflex (BEAR *et al.*, 2007) to higher brain functions as sensory processing. Our results showed an important alteration in parvalbumin positive neurons in both areas analyzed, leading to many insights about the triad excitatory/inhibitory imbalance, interneuron connectivity and sensory related areas. Not only the number of parvalbumin positive neurons demonstrated significant differences, but also the density of them expressed important patterns, besides that, the absolute number is a tricky data to analyze, because no matter how standardized the microscopy images are captured, there will always be some positions differences – so the density eliminates these bias, improving conclusions.

In the Primary Somatosensory Area, density of PV+ neurons are significant increased in the VPA group in the layer II-III and reduced in the same group in the layer IV-V, however, the density considering all PV+ neurons in all layer didn't expressed differences between groups – a study made with VPA model in mice demonstrated a similar result regarding to general density: in analysis of all somatosensory cortex they have found no differences, but the layer analysis wasn't performed (LAUBER *et al.*, 2016). So, observing the “big picture” we can see that there is no loss of parvalbumin positive neurons in this area, but the distribution of them is completely altered in layer suggesting that VPA promotes an over migration

to superior layer II-III, while layer IV-V end up deficient. Since parvalbumin positive neurons correspond to 40% of interneurons in cortical regions (XU *et al.*, 2010) and have innumerable synaptic contacts an alteration in that level in such an important area certainly leads to major outcomes. Evidence from other areas like superior colliculus (DENDRINOS *et al.*, 2011) and medial prefrontal cortex, both essential for functions like visual stimulus processing and inhibitory control, in the VPA model, demonstrated that reduction in density of PV+ neurons has an important outcome observed by impairment in social, stereotyped and sensory behaviors. Finally, only recently were described alterations in PV+ neurons in humans: a post mortem analyses of 11 brains of autistic-children showed an important reduction of these cells in the prefrontal cortex (HASHEMI *et al.*, 2016), confirming the data present in animal models and reassuring the necessity to expand experiments on this area.

Neuronal migration is a subject that combines both curiosity and mystery in view of the great number of genes and factors acting in a organized sequence to position each cell on its correct place. With parvalbumin positive neurons this is not different: we know little about the typical migration and much less about how it occurs in the context of psychiatric disorders. All GABAergic interneurons are generate in an embryonic region called Ganglionic Eminence and then migrate during embryo development towards cortex, amygdala, hippocampus and many other regions (JIANG *et al.*, 2016) – in that context, parvalbumin positive neurons are originated from Nkx2.1 lineage after signaling of Shh and start migration to cortex at E12.5 (MARÍN *et al.*, 2003) (the same day animals of our model receive VPA injection). Many other factors as *lhx6/8*, *sox6* and *dlx1/5* play their role in movement and expression of PV (Kelsom C *et al.*, 2013). The great majority of data describing failures in this migration process are obtained in animal models and human studies of schizophrenia: in a genetic model (*Disc1-L100P* mutants) was found many impairments in the PV+ migration, causing altered distribution in the neocortex and hippocampus and decreased GAD67/PV co-localization (LEE *et al.*, 2013), besides that, human studies have already shown, for example, lower expression of *lhx6*, an important migration regulator and reduction in PV+ cells in Dorsolateral Prefrontal Cortex (VOLK *et al.*, 2012). Moreover, a paper in which PV+ neurons were disabled by knocking down *Gad1* gene demonstrated curious ASD and Schizophrenia like

behaviors as sensorimotor gating deficits, increased novelty seeking and reduced fear extinction (BROWN *et al.*, 2015).

In the amygdala region PV+ neurons exhibited lower density in the VPA group when compared with control. In this region, it's already known that PV+ have a complex network in basolateral nuclei (WOODRUFF *et al.*, 2007) that can be altered by fear stimulation in the context of fear learning – a major function related to amygdala (LUCAS *et al.*, 2016). Besides that, a behavioral study demonstrated that environmental enrichment increases PV+ number in amygdala at the same time that reduces anxiety – an important comorbidity of ASD (URAKAWA *et al.*, 2013). Moreover, reduction in PV+ can be behind the electrical imbalance found in the amygdala of VPA model (LIN *et al.*, 2013), raising the importance of these cells.

Finally, the disruption in cortical columns organization identified qualitatively by observing the images of Primary Somatosensory Area confirm the columnar neuropathy (CASANOVA *et al.*, 2011) present in individuals with ASD. These alteration allied with the modified densities of PV+ neurons demonstrate a great impairment in cortical organization, probably causing major deficits in sensory processing and integration. Since behavior is the final key to clarify data related with autism, is essential to perform tasks like whisker nuisance task to conclude the incredible narrative of sensory impairments of autism, uniting interneurons, cortical organization and E/I imbalance.

## **Conclusions**

The prenatal exposure to VPA seemed to cause great impact in the two sensory related structures evaluated. In Primary Somatosensory Area, the loss of laminar organization and non-neuronal cells in layer IV-V in addition to the differences in distribution of PV+ between layers denote an important impact of the VPA in this area, altering the refined structure and probably influencing in the migration of PV+ cells. In Amygdala, the reduction in quantity and density of PV+ cells in VPA group confirms the alteration found in PSSA, demonstrating the important loss of the inhibitory component that may contribute to the general excitatory-inhibitory imbalance identified in ASD. Since these areas are essential to process and integrate many types of stimuli and also perform specific actions like consolidation of fear

memories the alteration found in this study may have great impact in behavioral features, so is crucial to expand the studies in order to clarify the “big picture” of the sensory questions in autism.

### **ACKNOWLEDGEMENTS**

This work was supported by FIPE-HCPA, CAPES-CNPq, PROPESQ and INCT-NIM.

### **CONFLICTS OF INTEREST**

The authors declare that there is no conflict of interest regarding this article.

## 5. REFERENCES

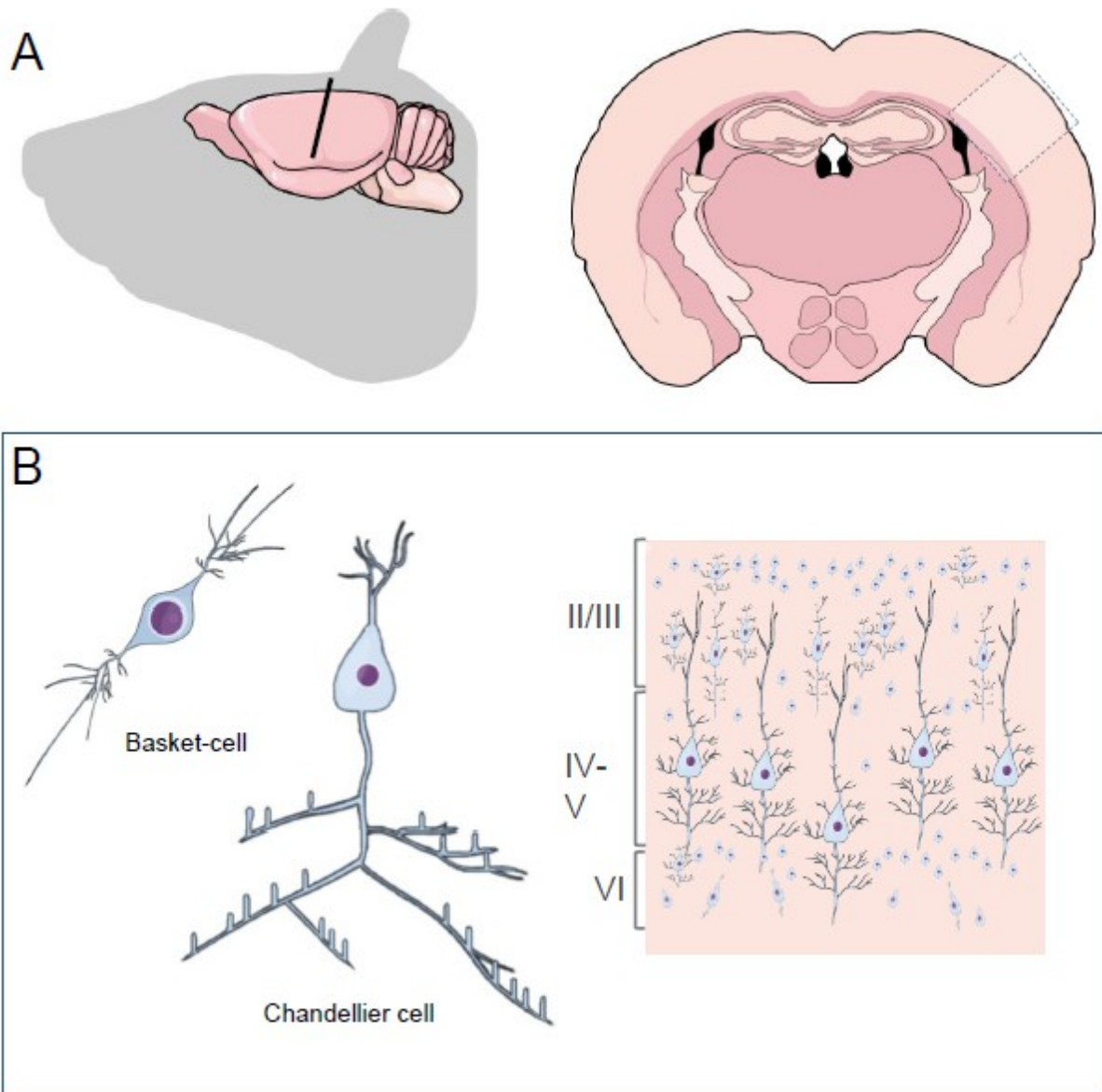
- Ashok AH, Baugh J, Yeragani VK. Paul Eugen Bleuler and the origin of the term schizophrenia. *Indian J Psychiatry* (2012) 54:95–6.
- Azevedo, F. A. C., Carvalho, L. R. B., Grinberg, L. T., Farfel, J. M., Ferretti, R. E. L., Leite, R. E. P., ... Herculano-Houzel, S. (2009). Equal numbers of neuronal and nonneuronal cells make the human brain an isometrically scaled-up primate brain. *Journal of Comparative Neurology*, 513(5), 532–541.
- Bambini-Junior, Victorio, et al. "Animal model of autism induced by prenatal exposure to valproate: behavioral changes and liver parameters." *Brain research* 1408 (2011): 8-16.
- Bear, M., Connors, B., & Paradiso, M. (2007). *Neuroscience*. Sunderland (MA): Sinauer Associates. <http://doi.org/978-0878937257>
- Belmonte, M. K., Allen, G., Beckel-Mitchener, A., Boulanger, L. M., Carper, R. A., & Webb, S. J. (2004). Autism and abnormal development of brain connectivity. *The Journal of Neuroscience*, 24(42), 9228–31.
- Brown, Jacquelyn A., et al. "Inhibition of parvalbumin-expressing interneurons results in complex behavioral changes." *Molecular psychiatry* 20.12 (2015): 1499-1507.
- Camacho J, Combs Z, Schumman C, Amaral D, Martinez-Cerdeno V: post mortem analysis of cell density in autistic temporal cortex. Soc Neurosci Kern et al. Translational Neurodegeneration 2013,2:17
- Casanova, M. F., Buxhoeveden, D. P., Switala, A. E., & Roy, E. (2011). Minicolumnar pathology in autism Minicolumnar pathology in autism. *Neurology*, 58, 428–432.
- Christensen, J., Grønberg, T. K., Sørensen, M. J., Schendel, D., Parner, E. T., Pedersen, L. H., & Vestergaard, M. (2013). Prenatal valproate exposure and risk of autism spectrum disorders and childhood autism. *Jama*, 309(16), 1696–703.
- Dendrinou, Georgia, Marie Hemelt, and Asaf Keller. "Prenatal VPA exposure and changes in sensory processing by the superior colliculus." *Frontiers in integrative neuroscience* 5 (2011): 68.
- Dietert, R. R., Dietert, J. M., & DeWitt, J. C. (2011). Environmental risk factors for autism. *Emerging Health Threats Journal*.

- Geschwind, Daniel H. "Advances in autism." *Annual review of medicine* 60 (2009): 367.
- Hashemi, Ezzat, et al. "The number of parvalbumin-expressing interneurons is decreased in the medial prefrontal cortex in autism." *Cerebral cortex* (2016): bhw021.
- Jiang, Xiao, Mathieu Lachance, and Elsa Rossignol. "Involvement of cortical fast-spiking parvalbumin positive basket cells in epilepsy." *Progress in brain research* 226 (2016): 81-126
- Kelsom, C., & Lu, W. (2013). Development and specification of GABAergic cortical interneurons. *Cell & Bioscience*, 3(1), 19.
- Lauber, E., Filice, F., & Schwaller, B. (2016). Prenatal Valproate Exposure Differentially Affects Parvalbumin-Expressing Neurons and Related Circuits in the Cortex and Striatum of Mice. *Frontiers in Molecular Neuroscience*, 9.
- Lee, F. H. F., Zai, C. C., Cordes, S. P., Roder, J. C., & Wong, A. H. C. (2013). Abnormal interneuron development in disrupted-in-schizophrenia-1 L100P mutant mice. *Molecular Brain*, 6(April), 20.
- Lin, Hui-Ching, et al. "The amygdala excitatory/inhibitory balance in a valproate-induced rat autism model." *PLoS One* 8.1 (2013): e55248.
- Lucas, E. K., Jegarl, A. M., Morishita, H., & Clem, R. L. (2016). Multimodal and Site-Specific Plasticity of Amygdala Parvalbumin Interneurons after Fear Learning. *Neuron*, 91(3), 629–643.
- Lucchina, L., & Depino, A. M. (2014). Altered Peripheral and Central Inflammatory Responses in a Mouse Model of Autism. *Autism Research*, 7(2), 273–289. <http://doi.org/10.1002/aur.1338>
- Petrelli, F., Pucci, L., & Bezzi, P. (2016). Astrocytes and Microglia and Their Potential Link with Autism Spectrum Disorders. *Frontiers in Cellular Neuroscience*, 10.
- Soares, Ana Maria Araújo. *Implementações metodológicas para o estudo eletrofisiológico e comportamental em um modelo animal de autismo*. MS thesis. Universidade Federal do Rio Grande do Norte, 2015.
- Schumann, C. M., & Amaral, D. G. (2006). Stereological Analysis of Amygdala Neuron Number in Autism. *Journal of Neuroscience*, 26(29), 7674–7679.

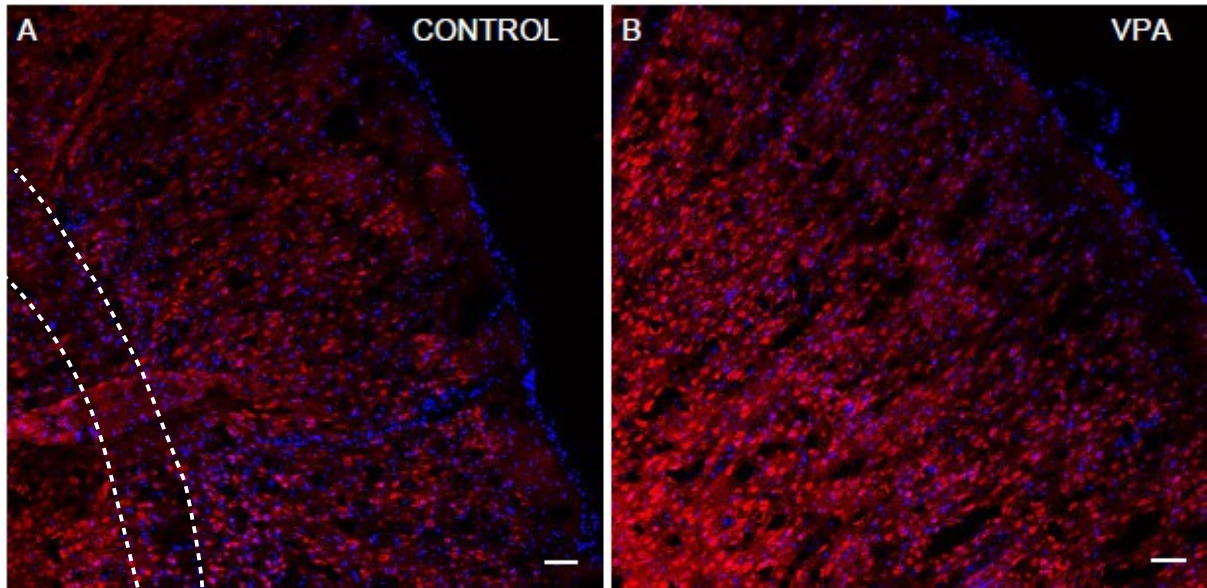


- Spence, S. J., & Schneider, M. T. (2009). The role of epilepsy and epileptiform EEGs in autism spectrum disorders. *Pediatric research*, 65(6), 599-606.
- Takano, T. (2015). Interneuron dysfunction in syndromic autism: Recent advances. *Developmental Neuroscience*. <http://doi.org/10.1159/000434638>
- Urakawa, Susumu, et al. "Rearing in enriched environment increases parvalbumin-positive small neurons in the amygdala and decreases anxiety-like behavior of male rats." *BMC neuroscience* 14.1 (2013): 13.
- Volk, D. W., Matsubara, T., Li, S., Sengupta, E. J., Georgiev, D., Minabe, Y., ... Lewis, D. A. (2012). Deficits in transcriptional regulators of cortical parvalbumin neurons in schizophrenia. *American Journal of Psychiatry*, 169(10), 1082–1091.
- Whitney, E. R, Kemper, T. L., Bauman, M. L., Rosene, D. L., & Blatt, G. J. (2008). Cerebellar Purkinje cells are reduced in a subpopulation of autistic brains: A stereological experiment using calbindin-D28k. *Cerebellum*, 7(3), 406–416.
- Woodruff, Alan R., and Pankaj Sah. "Networks of parvalbumin-positive interneurons in the basolateral amygdala." *Journal of Neuroscience* 27.3 (2007): 553-563.
- Xu X, Roby KD, Callaway EM (2010) Immunochemical characterization of inhibitory mouse cortical neurons: three chemically distinct classes of inhibitory cells. *J Comp Neurol* 518:389 – 404. CrossRef Medline
- Zeidn-Chuli, F., Salmina, A. B., Malinovskaya, N. A., Noda, M., Verkhatsky, A., & Moreira, J. C. F. (2014). The glial perspective of autism spectrum disorders. *Neuroscience and Biobehavioral Reviews*.

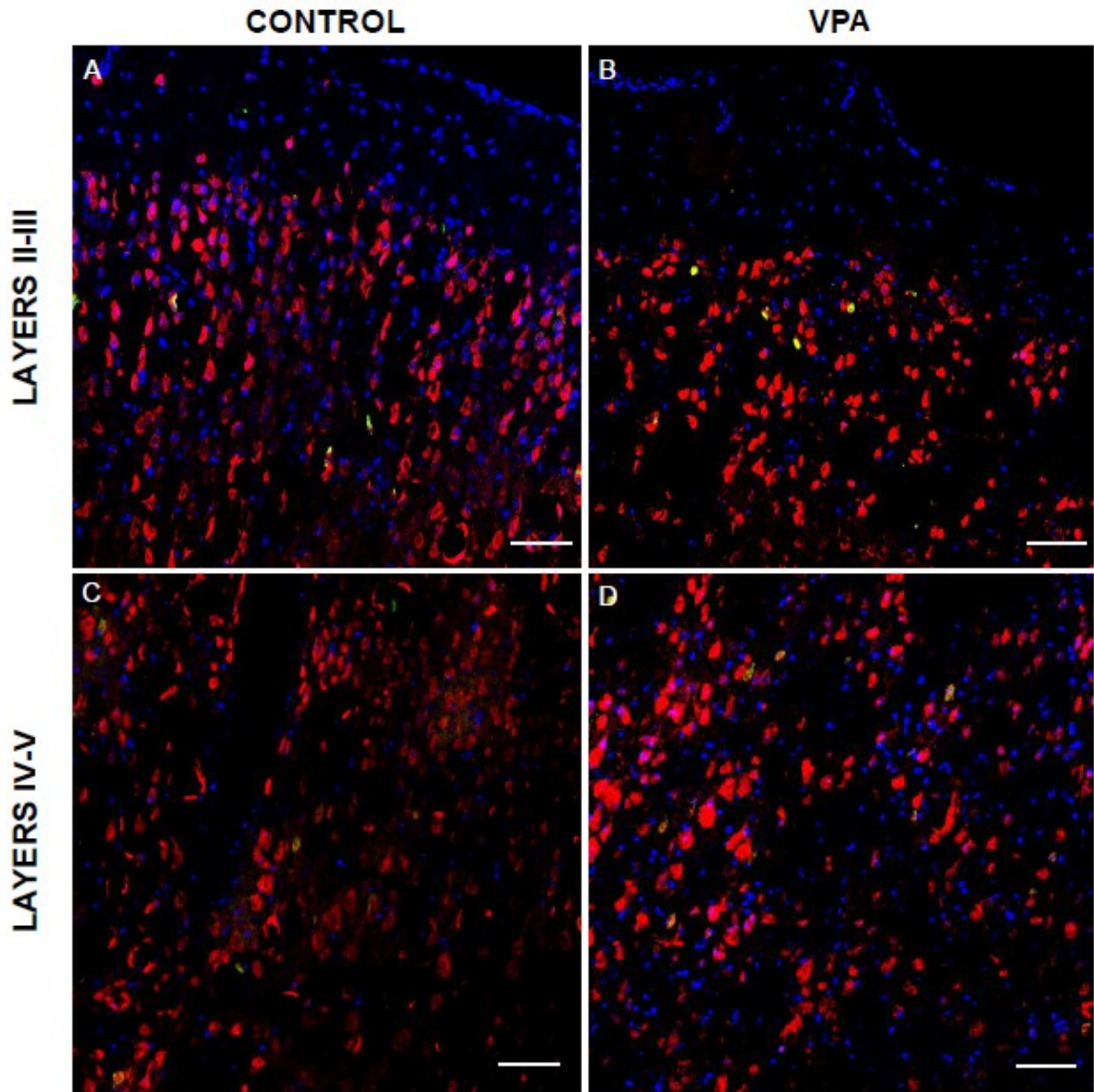
## 5. LIST OF FIGURES



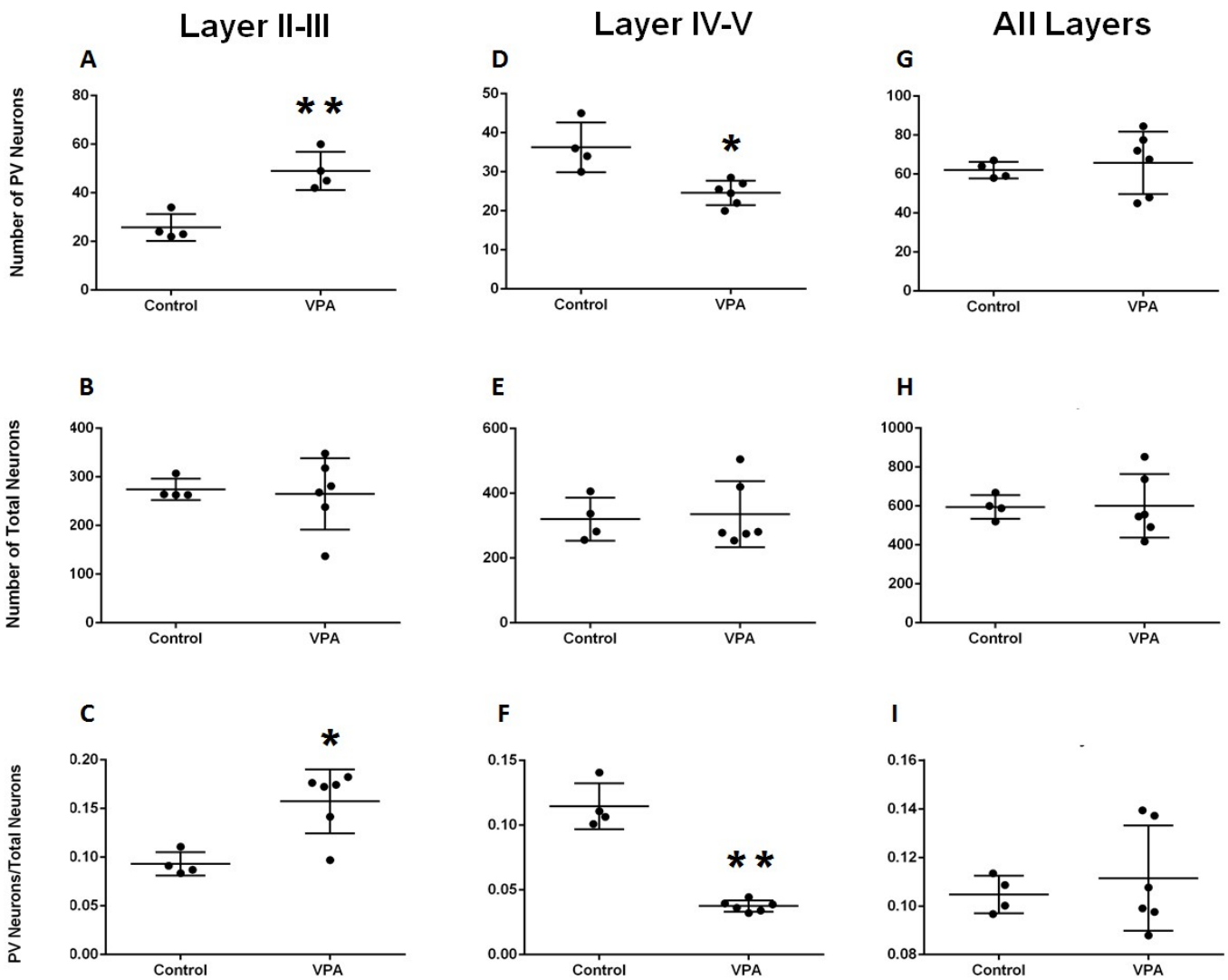
**Figure 1:** Schematic representation of Primary Somatosensory Area location in rat brain (A) and laminar organization of the cortex, highlighting not only the differences in cytoarchitecture between layer II-III and IV-V but also the morphological features of PV+ neurons (B).



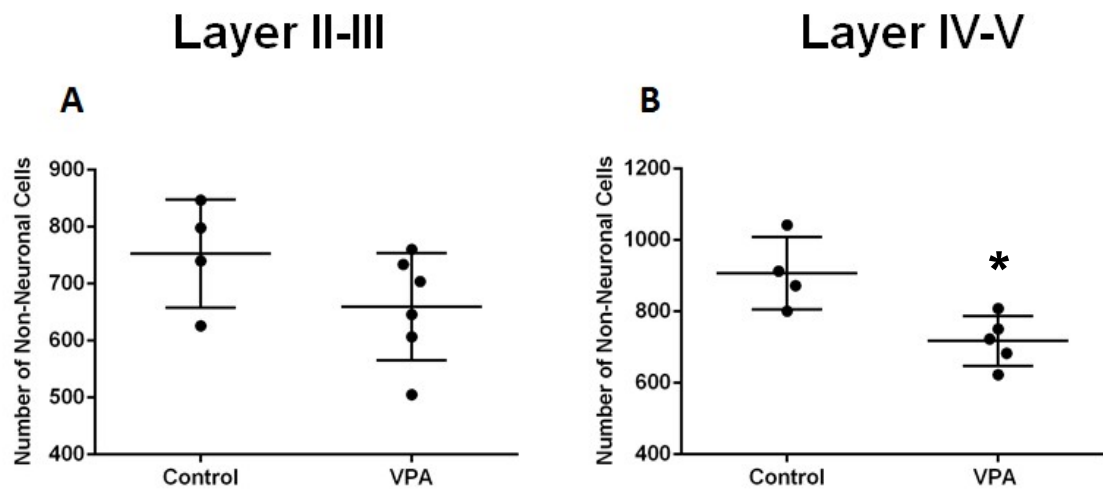
**Figure 2:** immunofluorescence image of Primary Somatosensory Area (magnification: 10x). Layer disorganization can be perceived in VPA group, in which the gap between layer II-III and IV-V (represented in control by the white dashed line) can no longer be noticed. In addition to that, columnar arrangement seemed to be impaired in VPA, since the neurons appeared to form disoriented groups, while in the control the vertical disposition is more easily seen.



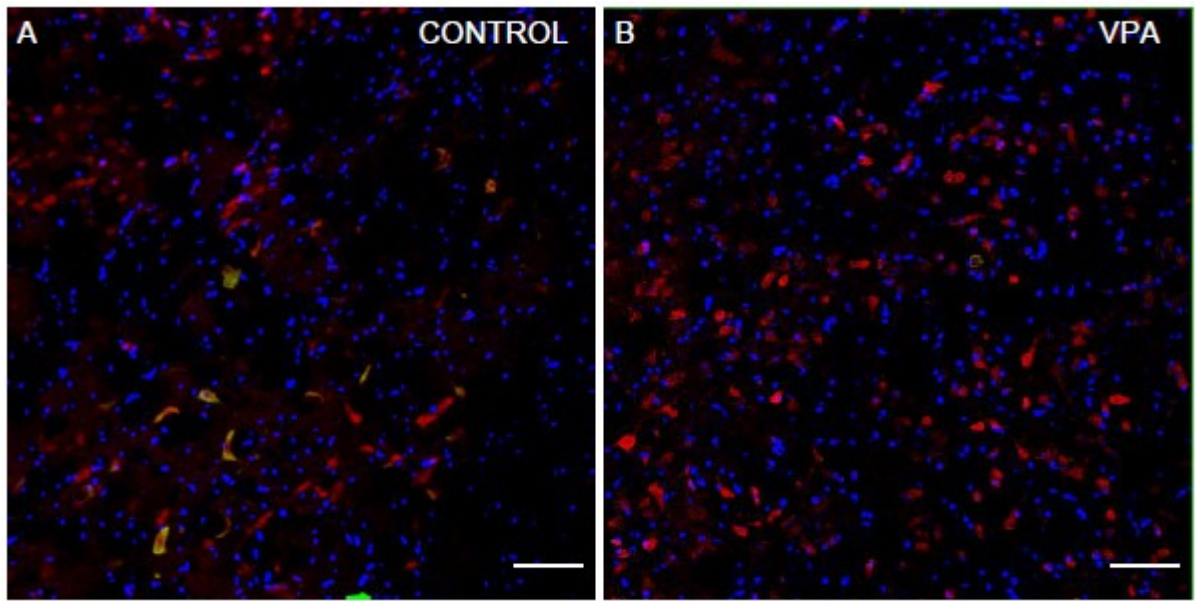
**Figure 3:** Immunofluorescence images from Primary Somatosensory Area. The increase in PV+ neurons (yellowish marked) number and density can be visualized in VPA group in layer II-III, while in the layer IV-V the same parameters appeared reduced in VPA group. Besides that, the laminar organization in VPA animals can also be visualized.



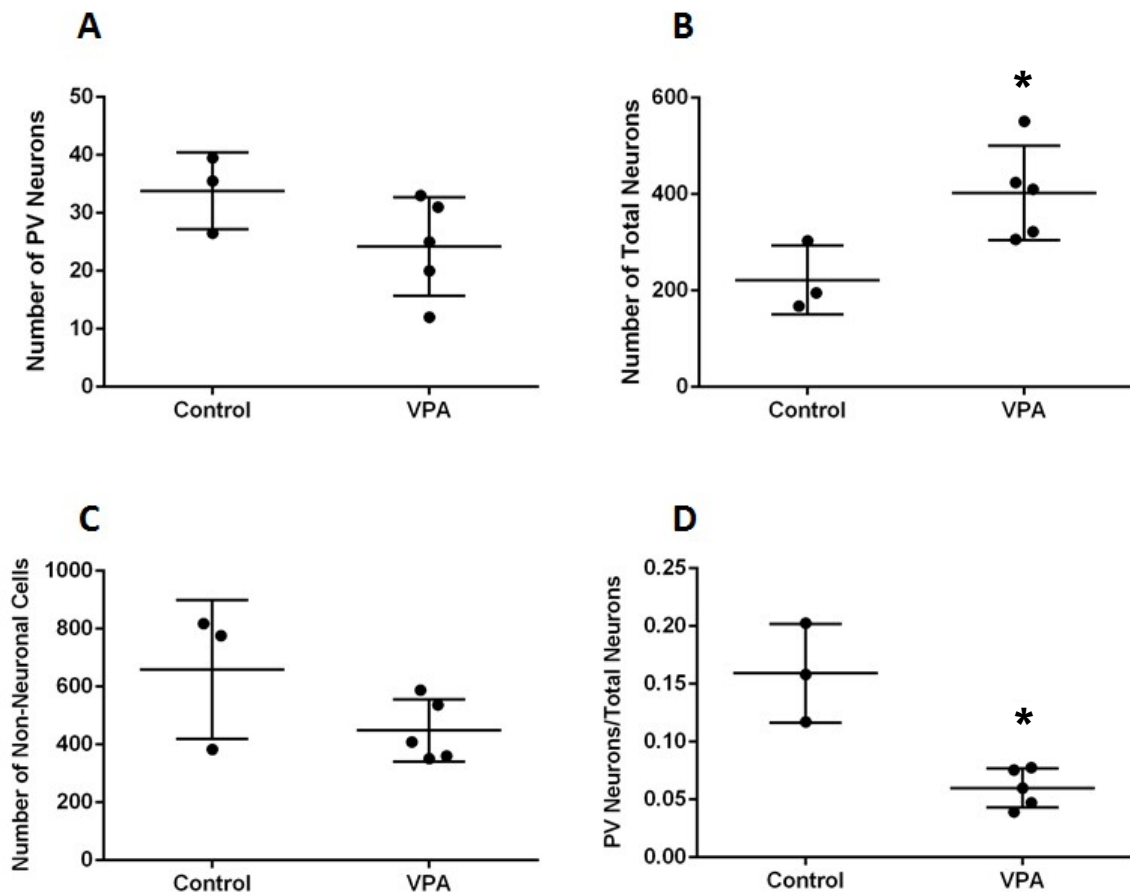
**Figure 4:** Results from immunofluorescence of Primary Somatosensory Area separated by layer. The number of total neurons showed no significant differences in layer II-III (B), IV-V (E) and in all layers together (H), demonstrating no neuronal loss in this region. Although number (G) and density (I) of PV neurons demonstrated no significant differences when analyzing all layers together, the isolation of II-III and IV-V layers showed: Increase in PV neuron number (A) and density (C) in VPA group in layer II-III, while in the layer IV-V VPA exhibited the opposite result with both reduction in PV number (D) and density (F). These data together suggest that PV cells may be affected by migration impairments promoted by VPA, since neuronal numbers remain unchanged observing the whole area. Data expressed as mean ± SD. \*p<0.05, \*\*p<0.01 (T Student's test, Welch).



**Figure 5:** Results from immunofluorescence of non-neuronal cells. Layer II-III showed no alteration (A), while a significant reduction was identified in VPA group in layer IV-V (B). Since glial cells have important roles in countless activities, this impairment may cause several homeostasis disruptions. Data expressed as mean $\pm$ SD . \* $p < 0.05$  (T Student's test, Welch).



**Figure 6:** Immunofluorescence image of Amygdala Region (magnification: 20x) demonstrating the reduction of PV+ neurons (yellowish marked) number and density in VPA group compared to control.



**Figure 7:** Results from immunofluorescence of Amygdala Region. The number of PV neurons (A) and non-neuronal cells (C) demonstrated no differences, while an important and significant reduction in the total number of neurons (B) and PV neurons density (D) was identified, contributing to clarify the role of VPA in sensory related structures. Data expressed as mean $\pm$ SD . \* $p$ <0.05 (T student's test, Welch).



## 6. CONCLUSÕES E PERSPECTIVAS

O presente trabalho demonstrou uma importante ação do tratamento pré-natal com ácido valproico em áreas relevantes para o processamento primário e integração de estímulos sensoriais. As alterações a nível de células gliais e de interneurônios inibitórios, mais especificamente os positivos para parvalbumina, na Área Somatossensorial Primária e na Região da Amígdala indica uma possível explicação para as hiper-responsividades e hiporresponsividades a diversos estímulos sensoriais identificadas na maioria dos indivíduos diagnosticados com TEA. Sob o ponto de vista eletrofisiológico, a depleção de neurônios GABAérgicos observada contribui para sustentar a hipótese geral de um desbalanço excitatório/inibitório, amplamente estudada no autismo. Assim, é necessário realizar testes de performance sensorial como o de estimulação de vibrissas a fim de correlacionar os possíveis dados obtidos. Além disso, avaliações de eletrofisiologia dessas regiões bem como detalhamento dos contatos sinápticos a nível de análise morfológica e quantitativa de espinhos além de quantificação proteica permitirão uma consolidação das conclusões desse trabalho no contexto do desequilíbrio excitatório-inibitório associado a alteração em interneurônios em regiões chave para o processamento sensorial.

**Tabela 1:** Resumo geral dos resultados obtidos nos animais do modelo animal de autismo induzido por exposição pré-natal ao ácido valproico em comparação com o controle.

<b>Região</b>	<b>Células Gliais</b>	<b>Neurônios totais</b>	<b>Densidade de Neurônios PV+</b>
<b>Camadas II-III da Área Somatossensorial Primária</b>	Sem diferença	Sem diferença	Aumento na densidade
<b>Camadas IV-V da Área Somatossensorial Primária</b>	Aumento na quantidade	Sem diferença	Redução na densidade
<b>Amígdala</b>	Sem diferença	Redução na quantidade	Redução na densidade

## 7. REFERÊNCIAS ADICIONAIS

- American Psychiatric Association. (2013). *DSM-V. American Journal of Psychiatry*.
- ANOMAL, Renata Figueiredo et al. Impaired processing in the primary auditory cortex of an animal model of autism. *Frontiers in systems neuroscience*, v. 9, 2015.
- Ashok AH, Baugh J, Yeragani VK. Paul Eugen Bleuler and the origin of the term schizophrenia. *Indian J Psychiatry* (2012) 54:95–6. doi:10.4103/0019-5545.94660
- Asperger, H. (1944), Die 'Autistischen Psychopathen' im Kindesalter, *Archiv fur Psychiatrie und Nervenkrankheiten*, 117, pp.76-136.
- Belmonte, M. K., Allen, G., Beckel-Mitchener, A., Boulanger, L. M., Carper, R. A., & Webb, S. J. (2004). Autism and abnormal development of brain connectivity. *The Journal of Neuroscience*, 24(42),9228–31.
- Burton BS (1882) On the propyl derivatives and decomposition products of ethylacetoacetate. *Am Chem J*: 385–39
- Casanova, M. F. (2015). The neuropathology of autism. In *The Molecular Basis of Autism* (pp. 153–171).
- Christensen, J., Grønberg, T. K., Sørensen, M. J., Schendel, D., Parner, E. T., Pedersen, L. H., & Vestergaard, M. (2013). Prenatal valproate exposure and risk of autism spectrum disorders and childhood autism. *Jama*, 309(16), 1696–703.
- Clery, H., Andersson, F., Bonnet-Brilhault, F., Philippe, A., Wicker, B., & Gomot, M. (2013). fMRI investigation of visual change detection in adults with autism. *NeuroImage: Clinical*, 2(1), 303–312.
- Coskun, M. A., Varghese, L., Reddoch, S., Castillo, E. M., Pearson, D. A., Loveland, K. A., ... Sheth, B. R. (2009). How somatic cortical maps differ in autistic and typical brains. *NeuroReport*, 20(2), 175–179
- Dichter, G. S. (2012). Functional magnetic resonance imaging of autism spectrum disorders. *Dialogues in Clinical Neuroscience*, 14(3), 319–351.
- Dietert, R. R., Dietert, J. M., & DeWitt, J. C. (2011). Environmental risk factors for autism. *Emerging Health Threats Journal*.
- DiLiberti, J. H., Farndon, P. a, Dennis, N. R., & Curry, C. J. (1984). The fetal valproate syndrome. *American Journal of Medical Genetics*, 19(3), 473–481.
- Ecker, C., Bookheimer, S. Y., & Murphy, D. G. M. (2015). Neuroimaging in autism spectrum disorder: Brain structure and function across the lifespan. *The Lancet Neurology*.

- El-Fishawy, P., & State, M. W. (2010). The genetics of autism: key issues, recent findings, and clinical implications. *The Psychiatric Clinics of North America*, 33(1), 83–105.
- Fatemi SH, Halt AR, Stary JM, Kanodia R, Schulz SC, Realmuto GR. Glutamic acid decarboxylase 65 and 67 kDa proteins are reduced in autistic parietal and cerebellar cortices. **Biological psychiatry**. 2002; 52(8):805–10.
- Fatemi SH, Reutiman TJ, Folsom TD, Thuras PD. GABA(A) receptor downregulation in brains of subjects with autism. **J Autism Dev Disord**. 2009; 39(2):223–30.
- Fombonne, E. (2009). Epidemiology of pervasive developmental disorders. *Pediatric Research*.
- Frith, U. (1989). *Autism: Explaining the enigma* (Vol. 1989). **Blackwell Scientific Publications: Oxford**.
- Galarreta, M., & Hestrin, S. (2001). Electrical synapses between GABA-releasing interneurons. *Nature Reviews. Neuroscience*, 2(6), 425–433.
- Geschwind, Daniel H. "Advances in autism." **Annual review of medicine** 60 (2009): 367.
- Gomot, M., Belmonte, M. K., Bullmore, E. T., Bernard, F. A., & Baron-Cohen, S. (2008). Brain hyper-reactivity to auditory novel targets in children with high-functioning autism. *Brain*, 131(9), 2479-2488.
- Gottfried, C., Bambini-Junior, V., Francis, F., Riesgo, R., & Savino, W. (2015). The impact of neuroimmune alterations in autism spectrum disorder. *Frontiers in Psychiatry*, 6(SEP).
- Han, S., Tai, C., Westenbroek, R.E., Yu, F.H., Cheah, C.S., Potter, G.B., Rubenstein, J.L., Scheuer, T., de la Iglesia, H.O., and Catterall, W.A. (2012). Autistic-like behaviour in Scn1a<sup>+/-</sup> mice and rescue by enhanced GABA-mediated neurotransmission. *Nature* 489, 385–390
- Hashemi, E., Ariza, J., Rogers, H., Noctor, S. C., & Martínez-Cerdeño, V. (2016). The Number of Parvalbumin-Expressing Interneurons Is Decreased in the Medial Prefrontal Cortex in Autism. *Cerebral Cortex (New York, N.Y. : 1991)*, bhw021-.
- Jia, X., & Kohn, A. (2011). Gamma rhythms in the brain. **PLoS Biology**, 9(4).
- Kanner, L. (1943), Autistic Disturbances of Affective Contact, **Nervous Child**, 2, pp.217-250.
- Kearney, J. A. (2015). Double Trouble: Impairment of Two Interneuron Types in a Dravet Mouse Model. *Epilepsy Currents*, 15(1), 47-49
- Kelsom, C., & Lu, W. (2013). Development and specification of GABAergic cortical interneurons. *Cell & Bioscience*, 3(1), 19.
- Lin, H. C., Gean, P. W., Wang, C. C., Chan, Y. H., & Chen, P. S. (2013). The amygdala excitatory/inhibitory balance in a valproate-induced rat autism model. *PLoS One*, 8(1), e55248.

- Mannion, A., & Leader, G. (2013). Comorbidity in autism spectrum disorder: A literature review. **Research in Autism Spectrum Disorders**.
- Marín, O., & Rubenstein, J. L. R. (2003). CELL MIGRATION IN THE FOREBRAIN. **Annual Review of Neuroscience**, 26(1), 441–483.
- Mier, D., Lis, S., Zygodnik, K., Sauer, C., Ulferts, J., Gallhofer, B., & Kirsch, P. (2014). Evidence for altered amygdala activation in schizophrenia in an adaptive emotion recognition task. **Psychiatry Research - Neuroimaging**, 221(3), 195–203.
- Moriceau, S., & Sullivan, R. M. (2005). Neurobiology of infant attachment. **Developmental Psychobiology**.
- Nelson, S. B., & Valakh, V. (2015). Excitatory/inhibitory balance and circuit homeostasis in autism spectrum disorders. **Neuron**, 87(4), 684-698
- Numis, A. L., Major, P., Montenegro, M. A., Muzykewicz, D. A., Pulsifer, M. B., & Thiele, E. A. (2011). Identification of risk factors for autism spectrum disorders in tuberous sclerosis complex. **Neurology**, 76(11), 981–987.
- Oblak AL, Gibbs TT, Blatt GJ. Decreased GABA(B) receptors in the cingulate cortex and fusiform gyrus in autism. **J Neurochem**. 2010; 114(5):1414–23.
- Paxinos, G., & Watson, C. (1997). The Rat Brain in Stereotaxic Coordinates. **Academic Press, San Diego**, 3rd.
- Rajmohan, V., & Mohandas, E. (2007). The limbic system. **Indian Journal of Psychiatry**, 49(2), 132–9.
- Ribeiro, S. H. B. (2007). Prevalência dos transtornos invasivos do desenvolvimento no município de Atibaia: um estudo piloto.
- Raghanti, Mary Ann, et al. "A comparative perspective on minicolumns and inhibitory GABAergic interneurons in the neocortex." **Front. Neuroanat** 4.3 (2010).
- Rodier, P. M., Ingram, J. L., Tisdale, B., Nelson, S., & Romano, J. (1996). Embryological origin for autism: Developmental anomalies of the cranial nerve motor nuclei. **Journal of Comparative Neurology**, 370(2), 247–261.
- Rubenstein, J. L. R., & Merzenich, M. M. (2003). Model of autism: increased ratio of excitation/inhibition in key neural systems. **Genes, Brain and Behavior**, 2(5), 255-267.
- Schneider, T., & Przewłocki, R. (2005). Behavioral alterations in rats prenatally exposed to valproic acid: animal model of autism. **Neuropsychopharmacology**, 30(1), 80–9.
- Shin, L. M., & Liberzon, I. (2010). The neurocircuitry of fear, stress, and anxiety disorders. **Neuropsychopharmacology : Official Publication of the American College of Neuropsychopharmacology**, 35(1), 169–191.

- Shinoda, Yo; SADAKATA, Tetsushi; FURUICHI, Teiichi. Animal models of autism spectrum disorder (ASD): a synaptic-level approach to autistic-like behavior in mice. **Experimental animals**
- Sohal, V. S., Zhang, F., Yizhar, O., & Deisseroth, K. (2009). Parvalbumin neurons and gamma rhythms enhance cortical circuit performance. **Nature**, 459(7247), 698–702.
- SOUSA, Juliana Alves Brandão Medeiros de. **Caracterização comportamental e distribuição de neurônios inibitórios em um modelo animal de autismo induzido por ácido valpróico**. 2013. Dissertação de Mestrado. Universidade Federal do Rio Grande do Norte.
- Speed, Haley E. et al. Autism-associated insertion mutation (InsG) of Shank3 exon 21 causes impaired synaptic transmission and behavioral deficits. **Journal of Neuroscience**, v. 35, n. 26, p. 9648-9665, 2015.
- Spence, S. J., & Schneider, M. T. (2009). The role of epilepsy and epileptiform EEGs in autism spectrum disorders. **Pediatric research**, 65(6), 599-606.
- Top, D. N., Stephenson, K. G., Doxey, C. R., Crowley, M. J., Kirwan, C. B., & South, M. (2016). Atypical Amygdala Response to Fear Conditioning in Autism Spectrum Disorder. **Biological Psychiatry: Cognitive Neuroscience and Neuroimaging**, 1(4), 308–315.
- van Steensel, F. J. A., Bögels, S. M., & Perrin, S. (2011). Anxiety Disorders in Children and Adolescents with Autistic Spectrum Disorders: A Meta-Analysis. **Clinical Child and Family Psychology Review**.
- Volk, D. W., & Lewis, D. A. (2014). Early developmental disturbances of cortical inhibitory neurons: contribution to cognitive deficits in schizophrenia. **Schizophrenia bulletin**, 40(5), 952-957.
- Volk, D. W., Matsubara, T., Li, S., Sengupta, E. J., Georgiev, D., Minabe, Y., ... Lewis, D. A. (2012). Deficits in transcriptional regulators of cortical parvalbumin neurons in schizophrenia. **American Journal of Psychiatry**, 169(10), 1082–1091.
- Willner, P. (1984). The validity of animal models of depression. **Psychopharmacology**.
- Xu X, Roby KD, Callaway EM (2010) Immunochemical characterization of inhibitory mouse cortical neurons: three chemically distinct classes of inhibitory cells. **J Comp Neurol** 518:389 – 404. CrossRef Medline
- Zalla, T., & Sperduti, M. (2013). The amygdala and the relevance detection theory of autism: an evolutionary perspective. **Frontiers in Human Neuroscience**, 7(December), 894.  
Disponível em: < <https://medlineplus.gov/ency/imagepages/19244.htm>> Acesso em: 20 de maio de 2017
- Disponível em:<[https://www.dartmouth.edu/~rswenson/NeuroSci/chapter\\_9.html](https://www.dartmouth.edu/~rswenson/NeuroSci/chapter_9.html)>Acesso em: 20 de maio de 2017
- Disponível em: <<https://www.cdc.gov/ncbddd/autism/data.html>> Acesso em: 20 de maio de 2017
- Disponível em: <<https://www.cdc.gov/ncbddd/autism/research.html>> Acesso em: 20 de maio de 2017

**ANEXO A:**

**Normas de Avaliação do Período Neuroscience**

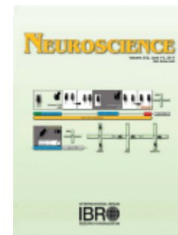


# NEUROSCIENCE

## AUTHOR INFORMATION PACK

### TABLE OF CONTENTS

●	<b>Description</b>	<b>p.1</b>
●	<b>Audience</b>	<b>p.1</b>
●	<b>Impact Factor</b>	<b>p.1</b>
●	<b>Abstracting and Indexing</b>	<b>p.1</b>
●	<b>Editorial Board</b>	<b>p.2</b>
●	<b>Guide for Authors</b>	<b>p.5</b>



ISSN: 0306-4522

### DESCRIPTION

*Neuroscience* publishes papers describing the results of original research on any aspect of the scientific study of the nervous system. Any paper, however short, will be considered for publication provided that it reports significant, new and carefully confirmed findings with full experimental details.  
IBRO-DEF-02.jpg

### AUDIENCE

Neuroscientists from all disciplines.

### IMPACT FACTOR

2015: 3.231 © Thomson Reuters Journal Citation Reports 2016

### ABSTRACTING AND INDEXING

BIOSIS  
Elsevier BIOBASE  
Chemical Abstracts  
Current Contents/ASCA  
Current Contents/BIOMED Database  
Current Contents/Life Sciences  
Current Contents/SciSearch Database  
Current Contents/Science Citation Index  
MEDLINE®  
EMBASE  
PASCAL/CNRS  
Scopus

## EDITORIAL BOARD

---

### **Chief Editor**

**J. Lerma**, Instituto de Neurociencias, Consejo Superior de Investigaciones Científicas, Universidad Miguel Hernández de Elche, 03550, San Juan de Alicante, Spain

### **Associate Editor**

**J.N. Sanes**, Dept. of Neuroscience, Brown University, 185 Meeting Street, Providence, Rhode Island, 02912-9089, USA

### **Board of Section Editors**

**A. Araque**, University of Minnesota, Minneapolis, Minnesota, USA

Synaptic physiology; glial cell biology; neurotransmitter receptors; signaling mechanisms.

**Y. Bozzi**, Università di Trento, Trento, Italy

Neurodevelopmental disorders; autism; epilepsy; gene expression; neurotransmitter receptors; signaling mechanisms; plasticity

**S. Canals**, Universidad Miguel Hernández, San Juan de Alicante, Spain

Neuroimaging; functional connectivity; synaptic plasticity; electrophysiology; learning and memory; drug addiction

**M.T. Carri**, Università di Roma "Tor Vergata", Roma, Italy

Neurodegeneration (AD, PD, ALS); oxidative stress and mitochondrial dysfunction; protein aggregation; RNA metabolism

**E. Coffey**, Turku Centre for Biotechnology, Turku, Finland

Molecular Neuroscience; neurodegenerative disease; kinase signalling; depression; cytoskeleton; proteomics

**K.E. Cullen**, Johns Hopkins University School of Medicine, Baltimore, Maryland, USA

**J. Fudge**, University of Rochester Medical Center, Rochester, New York, USA

Systems neuroscience; functional neuroanatomy; emotional processing; mood and anxiety disorders

**E. Gould**, Princeton University, Princeton, New Jersey, USA

Systems and Circuits; Human Neuroscience; structural plasticity; hormones, obesity and exercise in cognition.

**M. Heckmann**, Universität Würzburg, Würzburg, Germany

synaptic transmission, receptor channels and active zones

**A. Kania**, Institut de recherches cliniques de Montreal (IRCM), Montréal, Canada

Molecular mechanisms of neural fate specification, axon guidance, neuronal migration and connectivity.

**M. Knipper**, Eberhard-Karls-Universität Tübingen, Tübingen, Germany

Hearing deficit, tinnitus, hyperacusis, age-dependent hearing loss, deafness, BDNF, auditory circuits

**R. Kuner**, Ruprecht-Karls-Universität Heidelberg, Heidelberg, Germany

Sensory mechanisms; Pain; Development of peripheral and central nervous system.

**M. Moro**, Universidad Complutense de Madrid, Madrid, Spain

Disease-Oriented Neuroscience. Neuroprotection. Cerebral ischemia.

**R. Romo**, Universidad Nacional Autónoma de México (UNAM), Mexico City, Mexico

Neurobiology of perception, memory and decision making.

**S.R. Sesack**, University of Pittsburgh, Pittsburgh, Pennsylvania, USA

Tract-tracing and circuit analysis, cellular and subcellular localization of proteins involved in neurotransmission, ultrastructural measures of plasticity in response to drugs and environmental manipulations, physiological pharmacology

**G. Sperk**, Medizinische Universität Innsbruck, Innsbruck, Austria

System Neuroscience; Pharmacology; clinical drug actions; epileptogenesis; fear.

**M. Takada**, Kyoto University, Aichi, Japan

Behavioral and Cognitive Neuroscience. Primate research. Cortical processing.

### **Editorial Board**

**L. Acsády**, Institute of Experimental Medicine, Budapest, Hungary

**T. Arendt**, Universität Leipzig, Leipzig, Germany

**E. Aronica**, Academic Medical Centre (AMC), Amsterdam, Netherlands

**M. Barrot**, Centre National de la Recherche Scientifique (CNRS), Strasbourg, France

**M.D. Bevan**, Northwestern University, Chicago, Illinois, USA

**E. Bezard**, Université de Bordeaux, Bordeaux, France

**S. Bookheimer**, UCLA Health System, Los Angeles, California, USA

**P. Castillo**, Albert Einstein College of Medicine, Bronx, New York, USA

**L. Chelazzi**, Università degli Studi di Verona, Verona, Italy

**D. Choquet**, Université Bordeaux



**B. Christie**, University of Victoria, Victoria, British Columbia, Canada  
**A. Churchland**, Cold Spring Harbor Laboratory, Cold Spring Harbor, New York, USA  
**C. Conrad**, Arizona State University, Tempe, Arizona, USA  
**A. Contractor**, Northwestern University, Chicago, Illinois, USA  
**S. Denève**, École Normale Supérieure, Fontenay-aux-Roses, Cedex, France  
**M. DiLuca**, University of Milan, Milano, Italy  
**A. Draguhn**, Ruprecht-Karls-Universität Heidelberg, Heidelberg, Germany  
**F.E. Dudek**, University of Utah School of Medicine, Salt Lake City, Utah, USA  
**B. Firestein**, Rutgers University, Piscataway, New Jersey, USA  
**S. Floresco**, University of British Columbia, Vancouver, British Columbia, Canada  
**T.F. Freund**, Hungarian Academy of Sciences, Budapest, Hungary  
**M. Frotscher**, Universität Hamburg, Hamburg, Germany  
**L. Galea**, University of British Columbia, Vancouver, British Columbia, Canada  
**C.M. Gall**, University of California at Irvine, Irvine, California, USA  
**C. Giaume**, Collège de France, Paris, France  
**A. Giraud**, Université de Genève, Geneva 4, Switzerland  
**Y. Goda**, RIKEN Advanced Science Institute, Wako-Shi, Japan  
**S.G.N. Grant**, The Sanger Institute, Cambridge, UK  
**R. Gutierrez**, Centro de Investigación y de Estudios Avanzados (CINVESTAV), Mexico City, Mexico  
**I. Hanganu-Opatz**, Universität Hamburg, Hamburg, Germany  
**A. Hart**, Brown University, Providence, Rhode Island, USA  
**S. He**, Shanghai Jiao Tong University, Shanghai, China  
**O. Herreras**, Instituto Cajal, CSIC, Madrid, Spain  
**R.F. Hevner**, Seattle Children's Research Institute, Seattle, USA  
**M. Hill**, University of Calgary, Calgary, Alberta, Canada  
**E.C. Hirsch**, Unité Mixte de Recherche S975, Paris, France  
**P.R. Hof**, MSSM-Ichan Medical Institute, New York, New York, USA  
**R. Huganir**, Johns Hopkins University School of Medicine, Palo Alto, California, USA  
**R.L. Hyson**, Florida State University, Tallahassee, Florida, USA  
**N.Y.-Y. Ip**, Hong Kong University of Science and Technology, Kowloon, Hong Kong  
**T. Isa**, Kyoto University, Kyoto, Japan  
**D. Jaeger**, Emory University, Atlanta, Georgia, USA  
**P.H. Janak**, John Hopkins University, Baltimore, Maryland, USA  
**R-R. Ji**, Duke University Medical Center, Durham, North Carolina, USA  
**B.E. Jones**, McGill University, Montreal, Quebec, Canada  
**S. Kitazawa**, Osaka University, Osaka, Japan  
**M. Kokaia**, Lund University, Lund, Sweden  
**L. Lanfumey**, INSERM, Paris, France  
**H. Lassmann**, Medizinische Universität Wien, Wien, Austria  
**J.D. Levine**, University of California at San Francisco (UCSF), San Francisco, California, USA  
**S.G. Lisberger**, Duke University School of Medicine, Durham, North Carolina, USA  
**H. Luhmann**, Johannes Gutenberg Universität Mainz, Mainz, Germany  
**R.C. Malenka**, Stanford University School of Medicine, Palo Alto, California, USA  
**M.S. Malmierca**, Universidad de Salamanca, Salamanca, Spain  
**M. Maravall**, University of Sussex, Falmer, Brighton, England, UK  
**S. Martinez**, Instituto de Neurociencias de Alicante, San Juan de Alicante, Spain  
**C.M. McCormick**, Brock University, St Catharines, Ontario, Canada  
**T.A. Milner**, Weill Cornell Medicine, New York, New York, USA  
**M. Moita**, Champalimaud Research, Lisboa, Portugal  
**C. Mulle**, Université de Bordeaux, Bordeaux, France  
**A. Nobre**, University of Oxford, Oxford, UK  
**A. Pascual-Leone**, Harvard University, Lexington, Massachusetts, USA  
**D. Pietrobon**, University of Padova, Padova, Italy  
**P.M. Pilowsky**, The University of Sydney, Sydney, New South Wales, Australia  
**A. Planas**, Instituto de Investigaciones Biomedicas, Barcelona, Spain  
**M. Poo**, Chinese Academy of Sciences (CAS), Beijing, China  
**G.J. Quirk**, University of Puerto Rico School of Medicine, San Juan, Puerto Rico  
**Y. Rao**, Peking University, Beijing, China  
**T.E. Salt**, University College London (UCL), London, UK  
**H. Scharfman**, New York University, Orangeburg, New York, USA  
**R. Schmidt-Kastner**, Florida Atlantic University, Boca Raton, Florida, USA  
**W. Schulz**, University of Cambridge, Cambridge, UK  
**R. Shigemoto**, IST Austria, Klosterneuburg, Austria  
**A. Sirigu**, Centre National de la Recherche Scientifique (CNRS), Bron, France  
**J. Staiger**, Georg-August Universität Göttingen, Germany  
**C. Steinhäuser**, Rheinische Friedrich-Wilhelms-Universität Bonn, Bonn, Germany  
**C.L. Stuckey**, Medical College of Wisconsin, Milwaukee, Wisconsin, USA

**T.C. Südhof**, Howard Hughes Medical Institute (HHMI), University of Texas, Dallas, Texas, USA  
**M. Tanaka**, Hokkaido University, Sapporo, Japan  
**J.M. Tepper**, Rutgers University, Newark, New Jersey, USA  
**A. Todd**, University of Glasgow, Glasgow, Scotland, UK  
**R.W. Tsien**, New York University, New York, New York, USA  
**X.-J. Wang**, New York University Shanghai  
**N. Wenderoth**, ETH Zürich, Zurich, Switzerland  
**T. Wichmann**, Emory University, Atlanta, Georgia, USA  
**D.S. Zahm**, St. Louis University, St Louis, Missouri, USA  
**R.E. Zigmond**, Case Western Reserve University, Cleveland, Ohio, USA

***IBRO Reports Editor-in-Chief***

**Y.S. Chan**, The University of Hong Kong, Hong Kong, China

## GUIDE FOR AUTHORS

---

### INTRODUCTION

*Neuroscience* publishes the results of original research on any aspect of the scientific study of the nervous system. Papers most suitable for publication are those that report new observations that directly contribute to our understanding of how the nervous system works. Any paper, however short, will be considered for publication provided that it reports significant, new and carefully confirmed findings with full experimental details. The Editor-in-Chief, the Associate Editor, and the Section Editors will initially evaluate all submissions. Articles not estimated to represent strong candidates for publication will be returned to the authors without detailed review within 3-5 days. Otherwise, manuscripts will be sent to reviewers for rapid assessment.

*Neuroscience* does not have page or figure restrictions, and authors are encouraged to write complete papers that contain all the data necessary to present their findings persuasively.

### Editorial Organisation

The Chief and Associate Editors seek advice from Section Editors representing all major areas of research: Developmental Neuroscience Pain and Sensory Neuroscience Cellular and Molecular Neuroscience Behavioral and Cognitive Neuroscience Disease-Oriented Neuroscience Systems Neuroscience Theory and Innovative Approaches in Neuroscience

Each paper is typically evaluated by at least two Editors or ad hoc reviewers. Papers are accepted by the Chief and Associate Editors in consultation with the appropriate Section Editor.

#### **Editor-in-Chief:**

**Juan Lerma**, Instituto de Neurociencias, Consejo Superior de Investigaciones Científicas-Universidad Miguel Hernández, San Juan de Alicante, Spain; jlerma@umh.es

#### **Associate Editor:**

**Jerome N. Sanes**, Department of Neuroscience, Brown University, 185 Meeting St, Brown University, Box GL-N, Providence, RI 02912, USA; jnsanes-neuroscience@brown.edu

#### *Section Editors (and specialties):*

**Yuri Bozzi**, Center for Mind/Brain Sciences (CIMeC), University of Trento (Mattarello, Italy). *Molecular neuroscience and neuroprotection.*

**Santiago Canals**, Instituto de Neurociencias, CSIC-UMH (Alicante, Spain). *Behavioral and cognitive neuroscience.*

**Maria Teresa Carri**, University of Rome Tor Vergata, Department of Biology (Roma, Italy). *Molecular neuroscience and disease models.*

**Eleanor Coffey**, Turku Centre for Biotechnology (Turku, Finland). *Molecular neuroscience.*

**Julie Fudge**, University of Rochester Medical Center (Rochester NY, USA). *Systems neuroscience and functional neuroanatomy.*

**Manfred Heckmann**, Department of Neurophysiology, University of Würzburg (Würzburg, Germany). *Cellular and molecular neuroscience, neurophysiology.*

**Artur Kania**, Neural Circuit Development Research Unit, Institut de Recherches Cliniques de Montréal (Montréal, Canada). *Developmental neuroscience, stem cells and repair.*

**Marlies Knipper**, Hearing Research Centre Tbingen, THRC (Tbingen, Germany). *Sensory neuroscience.*

**Rohini Kuner**, Interdisciplinary Center of Neurosciences, University of Heidelberg (Heidelberg, Germany). *Pain mechanisms; sensory neuroscience.*

**Maria ngeles Moro**, Neurovascular Research Unit, Department of Pharmacology, School of Pharmacy, Universidad Complutense de Madrid (Madrid, Spain). *Disease-oriented neuroscience, neuroprotection, cerebral ischemia*.

**Ranulfo Romo**, Instituto de Fisiologia Celular, Universidad Nacional Autnoma de Mxico (Mxico DF, Mxico). *Cognitive neuroscience*.

**Susan Sesack**, University of Pittsburgh , Department of Neuroscience (Pittsburgh, PA, USA). Pharmacology, drugs of abuse, behavior.

**Gnther Sperk**, Medical University Innsbruck, Department of Pharmacology (Innsbruck, Austria). Systems neuroscience.

**Masahiko Takada**, Primate Research Institute, Kyoto University (Aichi, Japan). *Behavioral and cognitive neuroscience, primate research, cortical processing*.

### **The Neuroscience Peer Review Consortium**

*Neuroscience* is a member of the Neuroscience Peer Review Consortium (NPRC). The NPRC has been formed to reduce the time expended and, in particular, the duplication of effort by, and associated burden on reviewers involved in the peer review of original neuroscience research papers. It is an alliance of neuroscience journals that have agreed to accept manuscript reviews from other Consortium journals. By reducing the number of times that a manuscript is reviewed, the Consortium will reduce the load on reviewers and Editors, and speed the publication of research results.

If a manuscript has been rejected by another journal in the Consortium, authors can submit the manuscript to *Neuroscience* and indicate that the referees' reports from the first journal be made available to the Editors of *Neuroscience*.

It is the authors' decision as to whether or not to indicate that a set of referee's reports should be forwarded from the first journal to *Neuroscience* . If an author does not wish for this to happen, the manuscript can be submitted to *Neuroscience* without reference to the previous submission. No information will be exchanged between journals except at the request of authors. However, if the original referees' reports suggested that the paper is of high quality, but not suitable for the first journal, then it will often be to an author's advantage to indicate that referees' reports should be made available.

Authors should revise the original submission in accordance with the first journal's set of referee reports, reformat the paper to *Neuroscience's* specification and submit the paper to *Neuroscience* with a covering letter describing the changes that have been made, and informing the Editors that the authors will ask for the referee's reports to be forwarded from the first Consortium journal. The authors then must contact the first journal, and ask that reviews be forwarded, indicating they have submitted to *Neuroscience*, and providing the new manuscript ID number.

The Editors of *Neuroscience* will use forwarded referees' reports at their discretion. The Editors may use the reports directly to make a decision, or they may request further reviews if they feel such are necessary.

Visit <http://nprc.incf.org> for a list of Consortium journals, as well as further information on the scheme.

### **Types of Papers**

(a) *Research papers*. These are full-length papers describing original research. There are no specific page limits although authors are encouraged to be as concise as possible and to use as few, high quality illustrations as necessary to adequately document their findings. Former rapid reports that describe outstanding new discoveries fall under this category and should follow the same layout as research papers. All papers are handled rapidly.

(b) *Reviews*. These are short articles (3,000 to 10,000 words in length), not exhaustive reviews, that are intended to either draw attention to developments in a specific area of research, to bring together observations that seem to point the field in a new direction, to give the author's personal views on a controversial topic, or to direct soundly based criticism at some widely held dogma or

widely used technique in neuroscience. Reviews may also provide an historical perspective on an area of neuroscience research. Authors should make their Review understandable to a broad spectrum of neuroscientists. Potential authors are invited to submit a letter of interest to the Chief or Associate Editors or to a Section Editor indicating the topic of a potential Review. Proposals for reviews or commentaries should also contain an outline of the contents, including an abstract (<200 words), a list of 10 relevant articles including 5 from the proposer's own research, and a brief statement on why now is a good time to review the topic in question. Reviews will not be accepted for editorial processing unless pre-approved for submission.

(c) *Neuroscience Forefront Reviews*. These are invited reviews from a select list of scientists who have introduced new concepts, models, or methods in neurobiology. Forefront Reviews enable the authors to express their own opinions in a rigorous way. There is no page limit and the author/authors may choose the focus of the review as long as it remains scientifically sound. The reviews will be promoted through IBRO's websites and publications, and will be highly visible in the scientific community. Interest by a prominent scientist to contribute a Forefront Review should be sent to Jerome Sanes, Associate Editor, at [jnsanes-neuroscience@brown.edu](mailto:jnsanes-neuroscience@brown.edu).

(d) *Special Issues*. These are published as separate volumes with prominent neuroscientists as guest editors. Special Issues are devoted to specific topics, preferably "emergent topics" that open new fields in neurobiological research. The Special Issues are used actively in the promotion of *Neuroscience*.

A Special Issue is not a loose collection of topically related articles but a concerted attempt to provide an overview of the status of an emerging field. Cross references between the articles are strongly encouraged.

A Special Issue should normally contain 20-25 articles, corresponding to 200-300 printed pages in total. The articles may include original data. At least one of the articles (typically signed by the guest editors) should provide a general discussion of the implications of the recent advances in the field, and should attempt to identify the directions and challenges of future research.

Manuscripts are subjected to the review process according to the same high standards of quality as regular issues of *Neuroscience*. The Guest Editor(s) identify reviewers and take responsibility for the further editorial handling of the manuscripts, supported by the San Diego office. As for regular papers, the final decision on each article is taken by the Chief Editor.

Suggestions for special issues should be sent to Juan Lerma, Editor-in-Chief, at [jlerma@umh.es](mailto:jlerma@umh.es). They should contain an outline of the contents, including an abstract (<200 words), a list of articles with preliminary titles and contributors, and a brief statement on why.

(e) *Perspectives*. These are invited commentaries (typically <1,000 words) on current developments and trends in neuroscience research or public activities. A Perspective could highlight one or more recently published article, in any journal, that appears to set a new standard for a field within neuroscience or could recognize national or international events that influence the neuroscience community. Typically, the Chief or Associate Editor will identify authors to contribute a Perspective. However, potential authors are invited to submit a letter of interest to the Chief or Associate Editor indicating the topic of a potential Perspective.

(f) *Letters to the Editor*. We welcome readers to submit formal comments on the content of articles published in *Neuroscience*. Such comments should provide constructive scientific remarks. Readers may submit these comments as a Letter to the Editor, which should be concise, no more than 500 words, and we will transmit them to the author(s) of the commented-upon paper for their optional reply.

The main Editors of *Neuroscience* will consider the significance of these articles, and whether to proceed with soliciting the opinions of the authors of the commented-upon paper. We expect Letters to the Editor to fall within the spirit of constructive scientific discourse and supported, as needed by References, which should appear in the format used in *Neuroscience*. Authors should not include unpublished data in a Letter to the Editor. Submitting authors assume full responsibility for the accuracy of their content. Letters to the Editor will appear in the print and on-line version of *Neuroscience*, and as such will be fully citable in bibliographic services, for example PubMed.

(g) *Commentaries*. These are invited commentaries (typically <500 words) on a paper published in the same *Neuroscience* issue, which deserves further comment to call the attention of readers not primarily interested on the paper's topic. Commentaries could include one figure summarizing the main findings.

## **BEFORE YOU BEGIN**

### **Ethics in Publishing**

For information on **Ethics in Publishing** and Ethical guidelines for journal publication see <http://www.elsevier.com/publishingethics> and <http://www.elsevier.com/ethicalguidelines>

All submissions to *Neuroscience* must contain experiments that conform to the ethical standards printed below. To confirm their agreement with this, authors are required to include the following statement in their cover letter indicating their agreement with these standards: "I have read and have abided by the statement of ethical standards for manuscripts submitted to Neuroscience." A list of ethical standards is *not* required in the cover letter.

### **Policy and ethics**

The authors declare that all experiments on human subjects were conducted in accordance with the Declaration of Helsinki <http://www.wma.net/en/30publications/10policies/b3/index.html> and that all procedures were carried out with the adequate understanding and written consent of the subjects.

The authors also certify that formal approval to conduct the experiments described has been obtained from the human subjects review board of their institution and could be provided upon request.

If the studies deal with animal experiments, the authors certify that they were carried out in accordance with the National Institute of Health Guide for the Care and Use of Laboratory Animals (NIH Publications No. 80-23) revised 1996 or the UK Animals (Scientific Procedures) Act 1986 and associated guidelines, or the European Communities Council Directive of 24 November 1986 (86/609/EEC).

The authors also certify that formal approval to conduct the experiments described has been obtained from the animal subjects review board of their institution and could be provided upon request.

The authors further attest that all efforts were made to minimize the number of animals used and their suffering.

If the ethical standard governing the reported research is different from those guidelines indicated above, the authors must provide information in the submission cover letter about which guidelines and oversight procedures were followed.

The Editors reserve the right to return manuscripts in which there is any question as to the appropriate and ethical use of human or animal subjects.

### **Declaration of interest**

All authors must disclose any financial and personal relationships with other people or organizations that could inappropriately influence (bias) their work. Examples of potential conflicts of interest include employment, consultancies, stock ownership, honoraria, paid expert testimony, patent applications/registrations, and grants or other funding. If there are no conflicts of interest then please state this: 'Conflicts of interest: none'. [More information](#).

### **Submission declaration and verification**

Submission of an article implies that the work described has not been published previously (except in the form of an abstract or as part of a published lecture or academic thesis or as an electronic preprint, see '[Multiple, redundant or concurrent publication](#)' section of our ethics policy for more information), that it is not under consideration for publication elsewhere, that its publication is approved by all authors and tacitly or explicitly by the responsible authorities where the work was carried out, and that, if accepted, it will not be published elsewhere in the same form, in English or in any other language, including electronically without the written consent of the copyright-holder. To verify originality, your article may be checked by the originality detection service [CrossCheck](#).

### *Contributors*

Each author is required to declare his or her individual contribution to the article: all authors must have materially participated in the research and/or article preparation, so roles for all authors should be described. The statement that all authors have approved the final article should be true and included in the disclosure.

### *Addition, deletion, or rearrangement of author names in the authorship of accepted manuscripts*

*Before the accepted manuscript is published in an online issue*, requests to add or remove an author, or to rearrange the author names, must be sent to the Journal Manager from the corresponding author of the accepted manuscript and must include: The reason the name should be added or removed or the author names rearranged. Written confirmation (email, fax, letter) from all authors that they agree with the addition, removal or rearrangement. In the case of addition or removal of authors, this includes confirmation from the author being added or removed.

Requests that are not sent by the corresponding author will be forwarded by the Journal Manager to the corresponding author, who must follow the procedure as described above. Note that: Journal Managers will inform the Journal Editors of any such requests. Publication of the accepted manuscript in an online issue is suspended until authorship has been agreed.

### *After the accepted manuscript is published in an online issue*

Any requests to add, delete, or rearrange author names in an article published in an online issue will follow the same policies as noted above and result in a corrigendum.

### **Changes to authorship**

Authors are expected to consider carefully the list and order of authors **before** submitting their manuscript and provide the definitive list of authors at the time of the original submission. Any addition, deletion or rearrangement of author names in the authorship list should be made only **before** the manuscript has been accepted and only if approved by the journal Editor. To request such a change, the Editor must receive the following from the **corresponding author**: (a) the reason for the change in author list and (b) written confirmation (e-mail, letter) from all authors that they agree with the addition, removal or rearrangement. In the case of addition or removal of authors, this includes confirmation from the author being added or removed.

Only in exceptional circumstances will the Editor consider the addition, deletion or rearrangement of authors **after** the manuscript has been accepted. While the Editor considers the request, publication of the manuscript will be suspended. If the manuscript has already been published in an online issue, any requests approved by the Editor will result in a corrigendum.

### *Article transfer service*

This journal is part of our Article Transfer Service. This means that if the Editor feels your article is more suitable in one of our other participating journals, then you may be asked to consider transferring the article to one of those. If you agree, your article will be transferred automatically on your behalf with no need to reformat. Please note that your article will be reviewed again by the new journal. [More information](#).

### **Copyright**

Upon acceptance of an article, authors will be asked to complete a 'Journal Publishing Agreement' (see [more information](#) on this). An e-mail will be sent to the corresponding author confirming receipt of the manuscript together with a 'Journal Publishing Agreement' form or a link to the online version of this agreement.

Subscribers may reproduce tables of contents or prepare lists of articles including abstracts for internal circulation within their institutions. [Permission](#) of the Publisher is required for resale or distribution outside the institution and for all other derivative works, including compilations and translations. If excerpts from other copyrighted works are included, the author(s) must obtain written permission from the copyright owners and credit the source(s) in the article. Elsevier has [preprinted forms](#) for use by authors in these cases.

For open access articles: Upon acceptance of an article, authors will be asked to complete an 'Exclusive License Agreement' ([more information](#)). Permitted third party reuse of open access articles is determined by the author's choice of [user license](#).

### **Author rights**

As an author you (or your employer or institution) have certain rights to reuse your work. [More information](#).

#### *Elsevier supports responsible sharing*

Find out how you can [share your research](#) published in Elsevier journals.

#### **Role of the funding source**

You are requested to identify who provided financial support for the conduct of the research and/or preparation of the article and to briefly describe the role of the sponsor(s), if any, in study design; in the collection, analysis and interpretation of data; in the writing of the report; and in the decision to submit the article for publication. If the funding source(s) had no such involvement then this should be stated.

#### *Funding body agreements and policies*

Elsevier has established a number of agreements with funding bodies which allow authors to comply with their funder's open access policies. Some funding bodies will reimburse the author for the Open Access Publication Fee. Details of [existing agreements](#) are available online.

#### **Open access**

This journal offers authors a choice in publishing their research:

##### **Open access**

- Articles are freely available to both subscribers and the wider public with permitted reuse.
- An open access publication fee is payable by authors or on their behalf, e.g. by their research funder or institution.

##### **Subscription**

- Articles are made available to subscribers as well as developing countries and patient groups through our [universal access programs](#).
- No open access publication fee payable by authors.

Regardless of how you choose to publish your article, the journal will apply the same peer review criteria and acceptance standards.

For open access articles, permitted third party (re)use is defined by the following [Creative Commons user licenses](#):

##### *Creative Commons Attribution (CC BY)*

Lets others distribute and copy the article, create extracts, abstracts, and other revised versions, adaptations or derivative works of or from an article (such as a translation), include in a collective work (such as an anthology), text or data mine the article, even for commercial purposes, as long as they credit the author(s), do not represent the author as endorsing their adaptation of the article, and do not modify the article in such a way as to damage the author's honor or reputation.

##### *Creative Commons Attribution-NonCommercial-NoDerivs (CC BY-NC-ND)*

For non-commercial purposes, lets others distribute and copy the article, and to include in a collective work (such as an anthology), as long as they credit the author(s) and provided they do not alter or modify the article.

The open access publication fee for this journal is **USD 2400**, excluding taxes. Learn more about Elsevier's pricing policy: <https://www.elsevier.com/openaccesspricing>.

##### *Green open access*

Authors can share their research in a variety of different ways and Elsevier has a number of green open access options available. We recommend authors see our [green open access page](#) for further information. Authors can also self-archive their manuscripts immediately and enable public access from their institution's repository after an embargo period. This is the version that has been accepted for publication and which typically includes author-incorporated changes suggested during submission, peer review and in editor-author communications. Embargo period: For subscription articles, an appropriate amount of time is needed for journals to deliver value to subscribing customers before an article becomes freely available to the public. This is the embargo period and it begins from the date the article is formally published online in its final and fully citable form. [Find out more](#).

This journal has an embargo period of 12 months.



#### *Language (usage and editing services)*

Please write your text in good English (American or British usage is accepted, but not a mixture of these). Authors who feel their English language manuscript may require editing to eliminate possible grammatical or spelling errors and to conform to correct scientific English may wish to use the [English Language Editing service](#) available from Elsevier's WebShop.

#### **Submission**

Our online submission system guides you stepwise through the process of entering your article details and uploading your files. The system converts your article files to a single PDF file used in the peer-review process. Editable files (e.g., Word, LaTeX) are required to typeset your article for final publication. All correspondence, including notification of the Editor's decision and requests for revision, is sent by e-mail.

#### *Submission address*

Please submit your article via <http://ees.elsevier.com/nsc>.

Authors are strongly encouraged to use this Web-based submission system. However, for those who are unable to submit via the Web, please contact [neuroscience@journal-office.com](mailto:neuroscience@journal-office.com) or *Neuroscience* Editorial Office, 525 B Street, Suite 1800, San Diego, CA 92101, USA; FAX: 619-699-6859.

#### **Referees**

It is in your best interest to suggest some suitable reviewers and we strongly request that you do so. Suggested reviewers should not have co-authored a publication in the past 4 years or have an active collaboration with submitting authors. You may suggest up to 6 reviewers. Note that the editor retains the sole right to decide whether or not the suggested reviewers are used.

#### **Additional information**

All manuscripts are subject to any modifications required by the Editorial Office to conform to Journal policy.

#### *Cover illustrations*

Authors are encouraged to submit visually and scientifically interesting figure(s) representative of their data, though not necessarily as they appear in the manuscript, for potential cover illustrations (see specific instructions for submission of cover art under *PREPARATION / Color Artwork* below). The use of illustrations for journal covers is at the discretion of the Editors; only those related to articles accepted for publication will be considered. At the end of each year, all published covers will automatically be considered in a competition for the year's best cover illustration, and will be judged on their aesthetic value and scientific interest. Submitted cover images not created by the author group must include the reprint permission and source. The author(s) of the winning image will receive USD 500 from Elsevier.

#### *IBRO Reports*

Please note that because *Neuroscience* is highly selective, we offer some authors who are not accepted in *Neuroscience* the option to have their papers considered by our sister journal, *IBRO Reports*.

The primary goal of this process is to shorten the time to publication, reduce the burden upon reviewers and increase the opportunity for the author to be offered a venue for publication. This transfer entails the editor of *IBRO Reports* having direct electronic access to your review. This will not alter the confidentiality of the process.

### **PREPARATION**

#### **Peer review**

This journal operates a single blind review process. All contributions will be initially assessed by the editor for suitability for the journal. Papers deemed suitable are then typically sent to a minimum of two independent expert reviewers to assess the scientific quality of the paper. The Editor is responsible for the final decision regarding acceptance or rejection of articles. The Editor's decision is final. [More information on types of peer review.](#)

#### *Use of word processing software*

It is important that the file be saved in the native format of the word processor used. The text should be in single-column format. Keep the layout of the text as simple as possible. Most formatting codes will be removed and replaced on processing the article. In particular, do not use the word

processor's options to justify text or to hyphenate words. However, do use bold face, italics, subscripts, superscripts etc. When preparing tables, if you are using a table grid, use only one grid for each individual table and not a grid for each row. If no grid is used, use tabs, not spaces, to align columns. The electronic text should be prepared in a way very similar to that of conventional manuscripts (see also the [Guide to Publishing with Elsevier](#)). Note that source files of figures, tables and text graphics will be required whether or not you embed your figures in the text. See also the section on Electronic artwork.

To avoid unnecessary errors you are strongly advised to use the 'spell-check' and 'grammar-check' functions of your word processor.

### **Article structure**

Manuscripts should be written in English in a concise and understandable style. Technical jargon or "laboratory slang" should not be used. It is the responsibility of the corresponding author to ensure that the manuscript is written in a style that is grammatically correct and free of spelling or other typographical errors.

All manuscripts must be typewritten with **1.5 line-spacing** throughout and with margins at least 2.5 cm wide. Pages should be numbered in succession, the title page being no. 1.

The Editorial Office reserves the right to revise the wording of manuscripts accepted for publication in the journal.

Each submission should be accompanied by a cover letter, briefly explaining the conceptual advance provided by the findings and their significance to a broad readership.

### **Subdivision**

Divide your article into sections according to the headings listed below. Main sections (Introduction, Experimental Procedures, Results, etc.) and sub-section headings should appear on their own separate line. Use the section and sub-section names for internal cross-referencing: do not just refer to "the text".

**Research papers** should be organized in the following four main sections: Introduction, Experimental Procedures, Results, Discussion

**Reviews and Forefront Reviews** should have an introductory section, followed by several information presentation sections and then end with a conclusion section. Section headings should be used to organize the presentation of information.

### **Introduction**

This should provide the scientific rationale for the research that is reported. No results should be reported but it should finish with a succinct description of the main finding and conclusion. The heading "Introduction" should be used.

### **Experimental procedures**

Procedures used in the research should be described in sufficient detail to permit the replication of the work by others. Previously published procedures should be referenced and briefly summarized. The source of all materials, including animals and human tissue, must be provided. The location of each supplier should be detailed on first use in the text. The author(s) also agree(s) to make freely available to colleagues in academic research any clones of cells, nucleic acids, antibodies, etc. that were used in the research reported and that are not available from commercial suppliers. Authors must clearly describe all manipulations made to digital data that were collected as images, and images which have been scanned and printed for publication.

### **Results**

This section presents findings without discussion of their significance. Subsections should be used in order to present results in an organized fashion.

### **Discussion**

This section presents the authors' interpretations of their findings and an assessment of their significance in relation to previous work. Avoid repetition of material presented in the Results section. The Results and Discussion sections may *not* be combined.

## Conclusions

The main conclusions of the study may be presented in a short Conclusions section, which may stand alone or form a subsection of the Discussion section.

## Glossary

Please supply, as a separate list, the definitions of field-specific terms used in your article.

## Appendices

Material appearing in Appendices should augment the main manuscript narrative, by providing details otherwise not readily amenable to include in the main narrative. Examples of material that could appear in an Appendix include, but are not limited to: mathematical derivations; results of genetic screens; and lengthy reports of neuroimaging results. If there is more than one appendix, they should be identified as A, B, etc. Formulae and equations in appendices should be given separate numbering: Eq. (A.1), Eq. (A.2), etc.; in a subsequent appendix, Eq. (B.1) and so on. Similarly for tables and figures: Table A.1; Fig. A.1, etc. Appendices should not be used to extend the main narrative similar to the Supplementary Information sections permitted by other journals. Any data essential to support conclusions should be included in figures, tables, and within the main manuscript narrative.

## Essential title page information

- **Title.** Concise and informative. Titles are often used in information-retrieval systems. Avoid abbreviations and formulae where possible.
- **Author names and affiliations.** Please clearly indicate the given name(s) and family name(s) of each author and check that all names are accurately spelled. Present the authors' affiliation addresses (where the actual work was done) below the names. Indicate all affiliations with a lower-case superscript letter immediately after the author's name and in front of the appropriate address. Provide the full postal address of each affiliation, including the country name and, if available, the e-mail address of each author.
- **Corresponding author.** Clearly indicate who will handle correspondence at all stages of refereeing and publication, also post-publication. **Ensure that the e-mail address is given and that contact details are kept up to date by the corresponding author.**
- **Present/permanent address.** If an author has moved since the work described in the article was done, or was visiting at the time, a 'Present address' (or 'Permanent address') may be indicated as a footnote to that author's name. The address at which the author actually did the work must be retained as the main, affiliation address. Superscript Arabic numerals are used for such footnotes.

## Abstract

A concise and factual abstract is required. The abstract should state briefly in a single paragraph (in <250 words) the purpose of the research and the principal results obtained. The abstract should conclude with a final statement summarizing the major conclusions in such a way that the implications of the work to the field would be clear to a general neuroscience reader. An abstract is often presented separately from the article, so it must be able to stand alone. For this reason, References should be avoided, but if essential, then cite the author(s) and year(s). Also, non-standard or uncommon abbreviations should be avoided, but if essential they must be defined at their first mention in the abstract itself.

## Graphical abstract

Although a graphical abstract is optional, its use is encouraged as it draws more attention to the online article. The graphical abstract should summarize the contents of the article in a concise, pictorial form designed to capture the attention of a wide readership. Graphical abstracts should be submitted as a separate file in the online submission system. Image size: Please provide an image with a minimum of 531 × 1328 pixels (h × w) or proportionally more. The image should be readable at a size of 5 × 13 cm using a regular screen resolution of 96 dpi. Preferred file types: TIFF, EPS, PDF or MS Office files. You can view [Example Graphical Abstracts](#) on our information site.

Authors can make use of Elsevier's Illustration and Enhancement service to ensure the best presentation of their images and in accordance with all technical requirements: [Illustration Service](#).

## Highlights

Highlights are mandatory for this journal. They consist of a short collection of bullet points that convey the core findings of the article and should be submitted in a separate file in the online submission system. Please use 'Highlights' in the file name and include 3 to 5 bullet points (maximum 125 characters, including spaces, per bullet point). These could be used for dissemination of article findings in social networks. See <http://www.elsevier.com/highlights> for examples.

### **Keywords**

Immediately after the abstract, provide a maximum of 6 keywords, using American spelling and avoiding general and plural terms and multiple concepts (avoid, for example, 'and', 'of'). Be sparing with abbreviations: only abbreviations firmly established in the field may be eligible. These keywords will be used for indexing purposes.

### **Abbreviations**

The excessive use of abbreviations in the text is strongly discouraged. In order to aid communication between scientists of different disciplines, authors should only use abbreviations sparingly and should always define the abbreviation when first used in the text by placing it in parentheses after the full term, e.g. acetylcholinesterase (AChE). The abbreviations should then be used consistently thereafter and appear at least twice in the text. A comprehensive list of the abbreviations used should be put on a separate page that follows the title page.

### **Acknowledgements**

Collate acknowledgements in a separate section at the end of the article before the references and do not, therefore, include them on the title page, as a footnote to the title or otherwise. List here those individuals who provided help during the research (e.g., providing language help, writing assistance or proof reading the article, etc.). It is the corresponding author's responsibility to insure that individuals who are acknowledged for assistance or for providing comments on the manuscript are agreeable to being acknowledged in this way. At the end, briefly indicate how each author contributed to the work.

#### *Formatting of funding sources*

List funding sources in this standard way to facilitate compliance to funder's requirements:

Funding: This work was supported by the National Institutes of Health [grant numbers xxxx, yyyy]; the Bill & Melinda Gates Foundation, Seattle, WA [grant number zzzz]; and the United States Institutes of Peace [grant number aaaa].

It is not necessary to include detailed descriptions on the program or type of grants and awards. When funding is from a block grant or other resources available to a university, college, or other research institution, submit the name of the institute or organization that provided the funding.

If no funding has been provided for the research, please include the following sentence:

This research did not receive any specific grant from funding agencies in the public, commercial, or not-for-profit sectors.

#### *Units*

Follow internationally accepted rules and conventions: use the international system of units (SI). If other units are mentioned, please give their equivalent in SI.

### **Nomenclature and units**

Follow internationally accepted rules and conventions: use the international system of units (SI). If other quantities are mentioned, give their equivalent in SI. You are urged to consult IUGS: Nomenclature for geological time scales/rock names: <http://www.iugs.org/> for further information.

Symbols for physical units should be restricted to the Systems Internationale (S.I.) Units. Drug names should be the official or approved names; trade names or common names may be given in brackets where the drug is first mentioned. The manufacturer's name must be given. The doses of the drugs should be given as unit weight/unit body weight, e.g. mmol/kg or mg/kg.

### **Artwork**

#### *Electronic artwork*

- Figures should be the smallest size that will convey the essential scientific information. Three standard widths are used for figures: 1 column, 82 mm; 1.5 column, 120 mm; and 2 column, 174 mm. Please keep these widths in mind at the time of composing figures. Different panels should be labeled with capital letters, and the same font (Helvetica or Arial) should be used for any text; ensure that the font size will be readily readable in a published article. Please avoid excessive spacing between histogram bars and between figure panels.
- Number the illustrations according to their sequence in the text.
- Use a logical naming convention for your artwork files.
- Provide captions to illustrations separately.

- Produce images near to the desired size of the printed version.
- Submit each figure as a separate file.

A detailed guide on electronic artwork is available on our website:

<http://www.elsevier.com/artworkinstructions>

**You are urged to visit this site; some excerpts from the detailed information are given here.**

#### *Formats*

Regardless of the application used, when your electronic artwork is finalised, please "save as" or convert the images to one of the following formats (note the resolution requirements for line drawings, halftones, and line/halftone combinations given below):

EPS: Vector drawings. Embed the font or save the text as "graphics".

TIFF: color or grayscale photographs (halftones): always use a minimum of 300 dpi.

TIFF: Bitmapped line drawings: use a minimum of 1000 dpi.

TIFF: Combinations bitmapped line/half-tone (color or grayscale): a minimum of 500 dpi is required.

DOC, XLS or PPT: If your electronic artwork is created in any of these Microsoft Office applications please supply "as is".

- Do not supply embedded graphics in your wordprocessor (spreadsheet, presentation) document;
- Do not supply files that are optimised for screen use (like GIF, BMP, PICT, WPG); the resolution is too low;
- Do not supply files that are too low in resolution;
- Do not submit graphics that are disproportionately large for the content.

#### *Color artwork*

Please make sure that artwork files are in an acceptable format (TIFF (or JPEG), EPS (or PDF), or MS Office files) and with the correct resolution. If, together with your accepted article, you submit usable color figures then Elsevier will ensure, at no additional charge, that these figures will appear in color online (e.g., ScienceDirect and other sites) regardless of whether or not these illustrations are reproduced in color in the printed version. **For color reproduction in print, you will receive information regarding the costs from Elsevier after receipt of your accepted article.** Please indicate your preference for color: in print or online only. [Further information on the preparation of electronic artwork.](#)

#### *Cover art*

Illustrations to be considered for the cover should be related to the authors' submitted article and be representative of their data, but need not necessarily be as they appear in the manuscript. Cover art should be formatted to occupy the entire 8.5 X 11 inch cover and should be submitted in digital format (TIFF, Photoshop, JPEG or Powerpoint) with a resolution of at least 300 dpi. Please also include a descriptive text with your cover art submission. The files should be uploaded to a specified FTP site. Please contact the Editorial Office at [neuroscience@journal-office.com](mailto:neuroscience@journal-office.com) for instructions. For authors who wish to postal mail a CD with the cover art, please send it to: Neuroscience Editorial Office, 525 B Street, Suite 1700, San Diego, CA 92101, U.S.A. Please ensure that the manuscript reference number is included on all materials.

#### *Figure captions*

Ensure that each illustration has a caption. Supply captions separately, not attached to the figure. A caption should comprise a brief title (**not** on the figure itself) and a description of the illustration. Keep text in the illustrations themselves to a minimum but explain all symbols and abbreviations used.

#### *Text graphics*

Text graphics may be embedded in the text at the appropriate position. See further under Electronic artwork.

#### **Tables**

Please submit tables as editable text and not as images. Tables can be placed either next to the relevant text in the article, or on separate page(s) at the end. Number tables consecutively in accordance with their appearance in the text and place any table notes below the table body. Be sparing in the use of tables and ensure that the data presented in them do not duplicate results described elsewhere in the article. Please avoid using vertical rules and shading in table cells.

#### **References**

The reference list should be included at the end of the main text. A paper which has been accepted for publication but which has not appeared may be cited in the reference list with the abbreviated name of the journal followed by the words "in press". See Reference Style below.

#### *Citation in text*

Please ensure that every reference cited in the text is also present in the reference list (and vice versa). Any references cited in the abstract must be given in full. Unpublished results and personal communications are not recommended in the reference list, but may be mentioned in the text. If these references are included in the reference list they should follow the standard reference style of the journal and should include a substitution of the publication date with either 'Unpublished results' or 'Personal communication'. Citation of a reference as 'in press' implies that the item has been accepted for publication.

Personal Communications may be used only when written authorization from the communicator is submitted with the original manuscript; they may be mentioned only in the text and in the following form: (G.H. Orwell, Department of Psychiatry, University of Washington, personal communication). Unpublished or submitted experiments by one of the authors may be mentioned only in the text, not in the References. Initials, as well as surnames, must be given for authors whose unpublished experiments are quoted: (M.L. King, unpublished observations).

#### *Web references*

As a minimum, the full URL should be given and the date when the reference was last accessed. Any further information, if known (DOI, author names, dates, reference to a source publication, etc.), should also be given. Web references can be listed separately (e.g., after the reference list) under a different heading if desired, or can be included in the reference list.

#### *Data references*

This journal encourages you to cite underlying or relevant datasets in your manuscript by citing them in your text and including a data reference in your Reference List. Data references should include the following elements: author name(s), dataset title, data repository, version (where available), year, and global persistent identifier. Add [dataset] immediately before the reference so we can properly identify it as a data reference. The [dataset] identifier will not appear in your published article.

#### *Reference to arXiv*

As with unpublished results and personal communications, references to arXiv documents are not recommended in the reference list. Please make every effort to obtain the full reference of the published version of an arXiv document. If a reference to an arXiv document must be included in the references list it should follow the standard reference style of the journal and should include a substitution of the volume and page numbers with 'arXiv:YYMM.NNNN' or 'arXiv:arch-ive/YYMMNNN' for articles submitted to arXiv before April 2007.

#### *References in a special issue*

Please ensure that the words 'this issue' are added to any references in the list (and any citations in the text) to other articles in the same Special Issue.

#### *Reference management software*

Most Elsevier journals have their reference template available in many of the most popular reference management software products. These include all products that support [Citation Style Language styles](#), such as [Mendeley](#) and [Zotero](#), as well as [EndNote](#). Using the word processor plug-ins from these products, authors only need to select the appropriate journal template when preparing their article, after which citations and bibliographies will be automatically formatted in the journal's style. If no template is yet available for this journal, please follow the format of the sample references and citations as shown in this Guide.

Users of Mendeley Desktop can easily install the reference style for this journal by clicking the following link:

<http://open.mendeley.com/use-citation-style/neuroscience>

When preparing your manuscript, you will then be able to select this style using the Mendeley plug-ins for Microsoft Word or LibreOffice.

#### **Reference style**

In the text, references should be quoted as the name of the first author and year in chronological order. Multiple authors are indicated by "et al.", except when there are only two authors, in which case both names are written. For example, The pattern of the pathology instead represents a synaptically connected network of neurons (Braak and Braak, 1991; Morris, 1997). This hypothesis was recently proposed by Nagy et al. (1997).

The reference list should be on a separate page at the end of the manuscript, **in alphabetical order** and arranged as follows: authors' names and initials, year, title of the article, abbreviated title of the journal, volume, first and last page numbers. Journal titles should be abbreviated according to the rules adopted in the fourth edition of the World List of Scientific Periodicals (Butterworths, 1965). **Note that first and last pages are given in full.** For example, Nagy ZA, Esiri MM, Cato A-M, Smith AD (1997), Cell cycle markers in the hippocampus in Alzheimer's disease. *Acta Neuropath* 94:6-15.

References to books should include the authors' names and initials, year, title of book, volume, publisher, place of publication and page numbers. Where relevant, the title of a paper within a book, and the editor's name(s) should be given. For example, Morris JH (1997) Alzheimer's disease. In: *The neuropathology of dementia*, vol. 2 (Esiri MM, Morris JH, eds), pp 70-121. Cambridge: Cambridge University Press.

#### *Journal abbreviations source*

Journal names should be abbreviated according to the [List of Title Word Abbreviations](#).

#### **Video**

Elsevier accepts video material and animation sequences to support and enhance your scientific research. Authors who have video or animation files that they wish to submit with their article are strongly encouraged to include links to these within the body of the article. This can be done in the same way as a figure or table by referring to the video or animation content and noting in the body text where it should be placed. All submitted files should be properly labeled so that they directly relate to the video file's content. In order to ensure that your video or animation material is directly usable, please provide the files in one of our recommended file formats with a preferred maximum size of 150 MB. Video and animation files supplied will be published online in the electronic version of your article in Elsevier Web products, including [ScienceDirect](#). Please supply 'stills' with your files: you can choose any frame from the video or animation or make a separate image. These will be used instead of standard icons and will personalize the link to your video data. For more detailed instructions please visit our [video instruction pages](#). Note: since video and animation cannot be embedded in the print version of the journal, please provide text for both the electronic and the print version for the portions of the article that refer to this content.

#### **Supplementary data**

Neuroscience discourages the use of electronic supplementary material unless strictly necessary to enhance your scientific research. Neuroscience accepts electronic supplementary sound clips, videos, and other formats that cannot be embedded in standard PDF files. Appendices providing supplementary information to the main article are also acceptable. Supplementary files supplied will be published online alongside the electronic version of your article in Elsevier Web products, including ScienceDirect: [www.sciencedirect.com](http://www.sciencedirect.com). In order to ensure that your submitted material is directly usable, please provide the data in one of our recommended file formats. Authors should submit the material in electronic format together with the article and supply a concise and descriptive caption for each file. For more detailed instructions please visit our artwork instruction pages at [www.elsevier.com/artworkinstructions](http://www.elsevier.com/artworkinstructions).

*For Neuroscience, authors are allowed to post supplementary material for review, but for publication supplementary material will be restricted to formats that cannot be published in the standard form of a PDF, such as sound clips and movies.*

#### *Data linking*

If you have made your research data available in a data repository, you can link your article directly to the dataset. Elsevier collaborates with a number of repositories to link articles on ScienceDirect with relevant repositories, giving readers access to underlying data that give them a better understanding of the research described.

There are different ways to link your datasets to your article. When available, you can directly link your dataset to your article by providing the relevant information in the submission system. For more information, visit the [database linking page](#).

For [supported data repositories](#) a repository banner will automatically appear next to your published article on ScienceDirect.

In addition, you can link to relevant data or entities through identifiers within the text of your manuscript, using the following format: Database: xxxx (e.g., TAIR: AT1G01020; CCDC: 734053; PDB: 1XFN).

## ARTICLE ENRICHMENTS

### AudioSlides

The journal encourages authors to create an AudioSlides presentation with their published article. AudioSlides are brief, webinar-style presentations that are shown next to the online article on ScienceDirect. This gives authors the opportunity to summarize their research in their own words and to help readers understand what the paper is about. [More information and examples are available](#). Authors of this journal will automatically receive an invitation e-mail to create an AudioSlides presentation after acceptance of their paper.

### Antibody data

Antibody Data is the reference application linking to information about the antibodies mentioned in the article, based on the [NIF Antibody Registry](#). Authors are encouraged to include relevant antibody identifiers in their articles (e.g. Antibody Registry: AB\_878537 or RRID: AB\_878537) if appropriate. [More information](#).

### 3D neuroimaging

You can enrich your online articles by providing 3D neuroimaging data in NIfTI format. This will be visualized for readers using the interactive viewer embedded within your article, and will enable them to: browse through available neuroimaging datasets; zoom, rotate and pan the 3D brain reconstruction; cut through the volume; change opacity and color mapping; switch between 3D and 2D projected views; and download the data. The viewer supports both single (.nii) and dual (.hdr and .img) NIfTI file formats. Recommended size of a single uncompressed dataset is maximum 150 MB. Multiple datasets can be submitted. Each dataset will have to be zipped and uploaded to the online submission system via the '3D neuroimaging data' submission category. Please provide a short informative description for each dataset by filling in the 'Description' field when uploading a dataset. Note: all datasets will be available for downloading from the online article on ScienceDirect. If you have concerns about your data being downloadable, please provide a video instead. [More information](#).

### Interactive plots

This journal enables you to show an Interactive Plot with your article by simply submitting a data file. [Full instructions](#).

### Submission checklist

It is hoped that this list will be useful during the final checking of an article prior to sending it to the journal's Editor for review. Please consult this Guide for Authors for further details of any item.

#### Ensure that the following items are present:

One Author designated as corresponding Author:

- E-mail address
- Full postal address
- Telephone and fax numbers

All necessary files have been uploaded

- Keywords
- All figure captions
- All tables (including title, description, footnotes)

Further considerations

- Manuscript has been "spellchecked" and "grammar-checked"
- References are in the correct format for this journal
- All references mentioned in the Reference list are cited in the text, and vice versa
- Cover letter includes your agreement to the ethical standards: **"I have read and have abided by the statement of ethical standards for manuscripts submitted to Neuroscience," as well as the other statement that all authors have approved the final article.**
- Permission has been obtained for use of copyrighted material from other sources (including the Web)
- Color figures are clearly marked as being intended for color reproduction on the Web (free of charge) and in print or to be reproduced in color on the Web (free of charge) and in black-and-white in print
- If only color on the Web is required, black and white versions of the figures are also supplied for printing purposes

For any further information please visit our customer support site at [service.elsevier.com](http://service.elsevier.com).

**See also the IBRO Website** <http://www.ibro.org>



## **AFTER ACCEPTANCE**

### **Online proof correction**

Corresponding authors will receive an e-mail with a link to our online proofing system, allowing annotation and correction of proofs online. The environment is similar to MS Word: in addition to editing text, you can also comment on figures/tables and answer questions from the Copy Editor. Web-based proofing provides a faster and less error-prone process by allowing you to directly type your corrections, eliminating the potential introduction of errors.

If preferred, you can still choose to annotate and upload your edits on the PDF version. All instructions for proofing will be given in the e-mail we send to authors, including alternative methods to the online version and PDF.

We will do everything possible to get your article published quickly and accurately. Please use this proof only for checking the typesetting, editing, completeness and correctness of the text, tables and figures. Significant changes to the article as accepted for publication will only be considered at this stage with permission from the Editor. It is important to ensure that all corrections are sent back to us in one communication. Please check carefully before replying, as inclusion of any subsequent corrections cannot be guaranteed. Proofreading is solely your responsibility.

### **Offprints**

The corresponding author will, at no cost, receive 25 free paper offprints, or alternatively a customized [Share Link](#) providing 50 days free access to the final published version of the article on [ScienceDirect](#). The Share Link can be used for sharing the article via any communication channel, including email and social media. For an extra charge, paper offprints can be ordered via the offprint order form which is sent once the article is accepted for publication. Both corresponding and co-authors may order offprints at any time via Elsevier's [Webshop](#). Corresponding authors who have published their article open access do not receive a Share Link as their final published version of the article is available open access on ScienceDirect and can be shared through the article DOI link.

See also the IBRO Website [www.ibro.org](http://www.ibro.org)

## **AUTHOR INQUIRIES**

Visit the [Elsevier Support Center](#) to find the answers you need. Here you will find everything from Frequently Asked Questions to ways to get in touch.

You can also [check the status of your submitted article](#) or find out [when your accepted article will be published](#).

© Copyright 2014 Elsevier | <http://www.elsevier.com>

**ANEXO B:**

**Carta de Aprovação do Comitê de Ética**



**HCPA - HOSPITAL DE CLÍNICAS DE PORTO ALEGRE  
GRUPO DE PESQUISA E PÓS-GRADUAÇÃO**

**COMISSÃO DE ÉTICA NO USO DE ANIMAIS**

A Comissão de Ética no Uso de Animais (CEUA/HCPA) analisou o projeto:

**Projeto:** 140367

**Data da Versão do Projeto:** 13/08/2014

**Pesquisadores:**

RUDIMAR DOS SANTOS RIESGO  
GUSTAVO DELLA FLORA NUNES  
KAMILA CASTRO GROKOSKI  
MELLANIE FONTES DUTRA DA SILVA  
CARMEM GOTTFRIED  
DIEGO MOURA BARONIO

**Título:** Modelo animal de autismo por exposição pré-natal ao ácido valpróico: Análise de sinapses inibitórias e excitatórias

Este projeto foi APROVADO em seus aspectos éticos e metodológicos de acordo com as Diretrizes e Normas Nacionais e Internacionais, especialmente a Lei 11.794 de 08/10/2008, que estabelece procedimentos para o uso científico de animais.

- Os membros da CEUA/HCPA não participaram do processo de avaliação de projetos onde constam como pesquisadores.
- Toda e qualquer alteração do Projeto deverá ser comunicada à CEUA/HCPA.
- O pesquisador deverá apresentar relatórios semestrais de acompanhamento e relatório final ao CEUA/HCPA.

Porto Alegre, 07 de outubro de 2014.

Profª Iraci Lucena da Silva Torres  
Coordenadora CEUA/HCPA