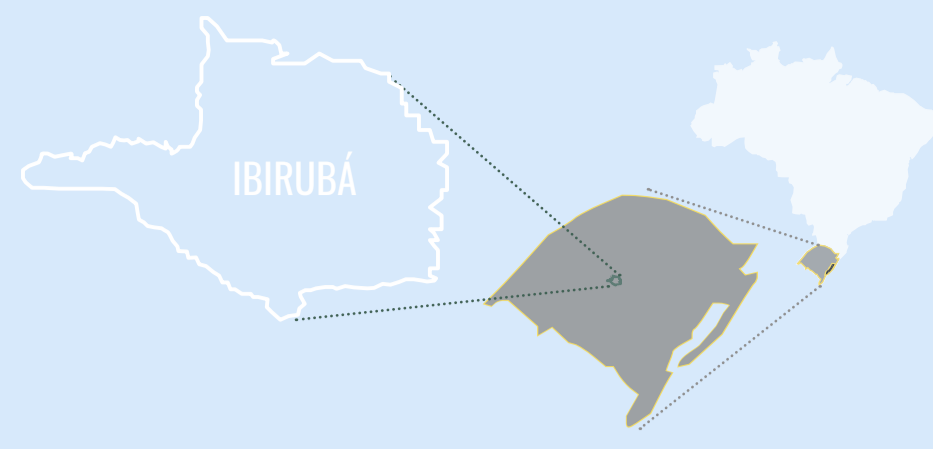


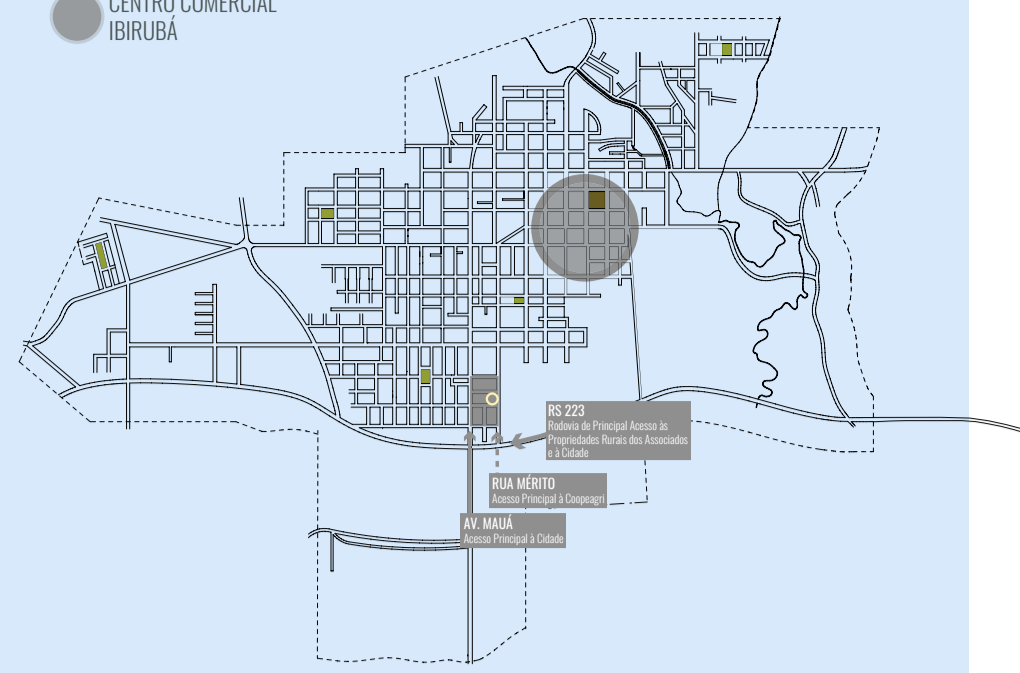
# CULTIVAR E ALIMENTAR: ESPAÇO COOPERATIVO DE AGRICULTURA FAMILIAR

RUTI LUÍZA CONRAD \* ORIENTADORA ANA ELÍSIA COSTA \* TCC 2018-01

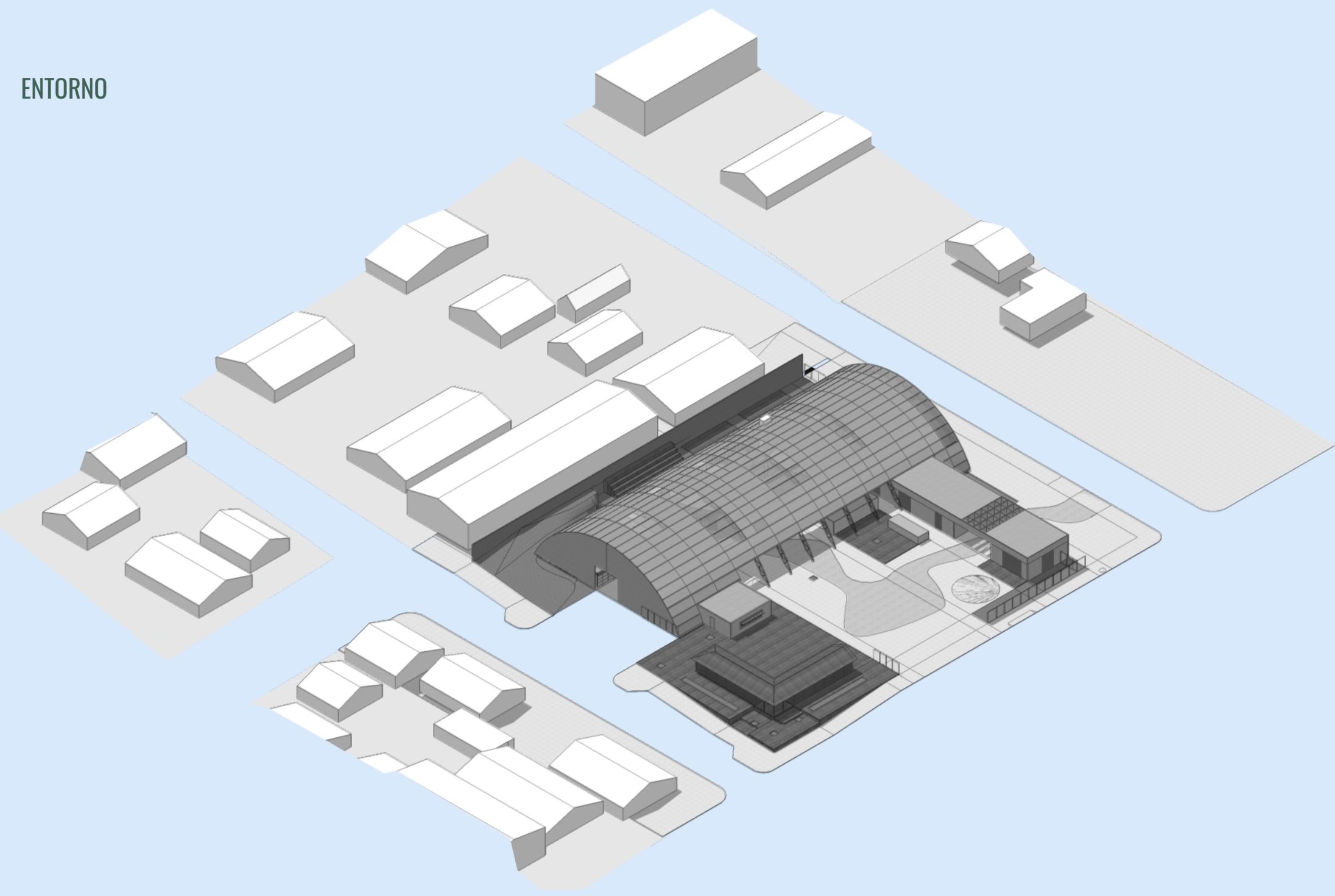
LOCALIZAÇÃO



RELAÇÕES COOPEAGRI - CIDADE



ENTORNO



ENTORNO

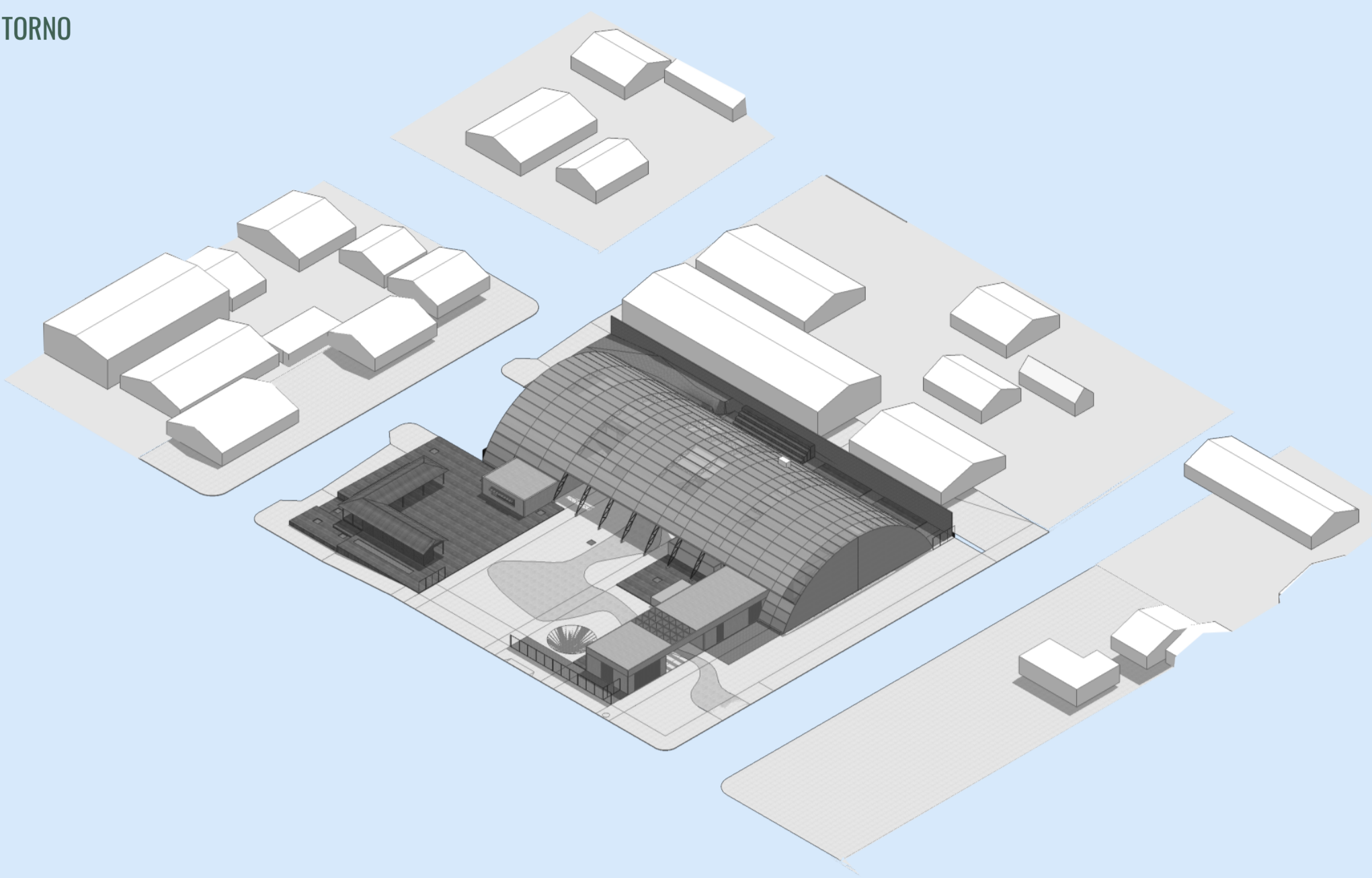
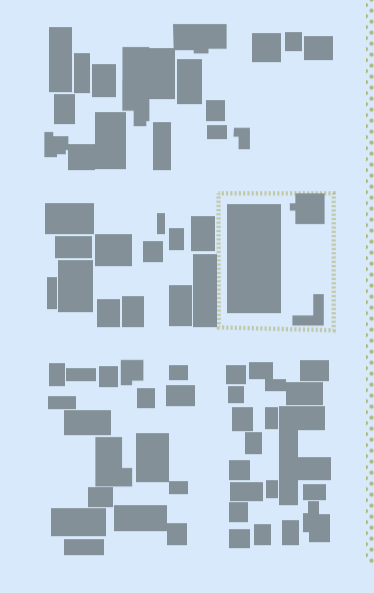
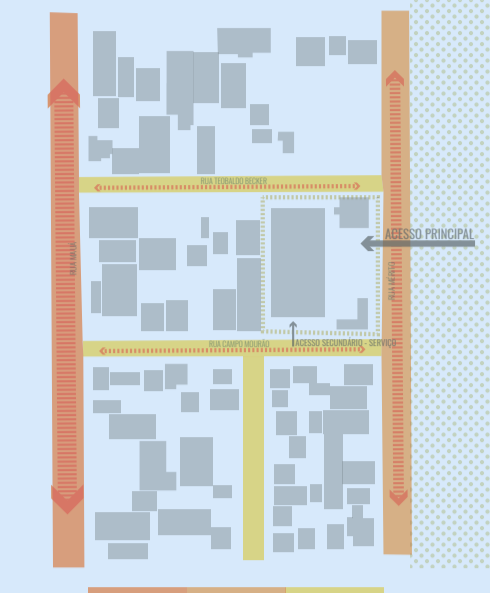


FIGURA-FUNDO



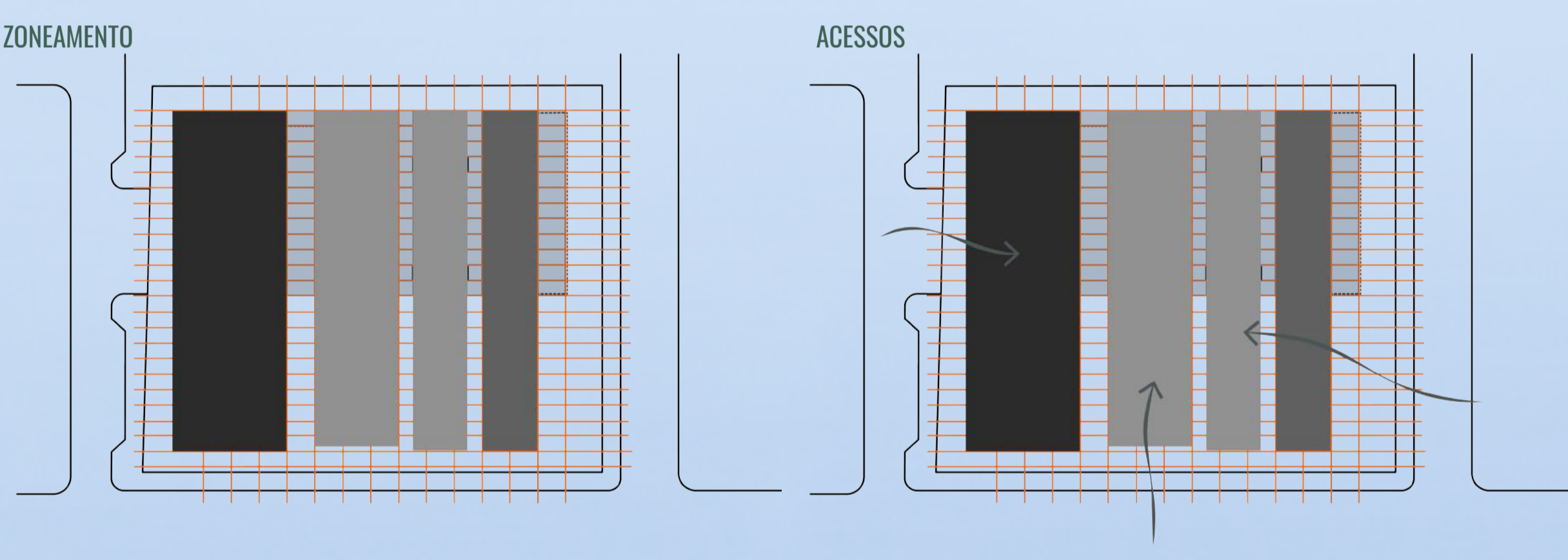
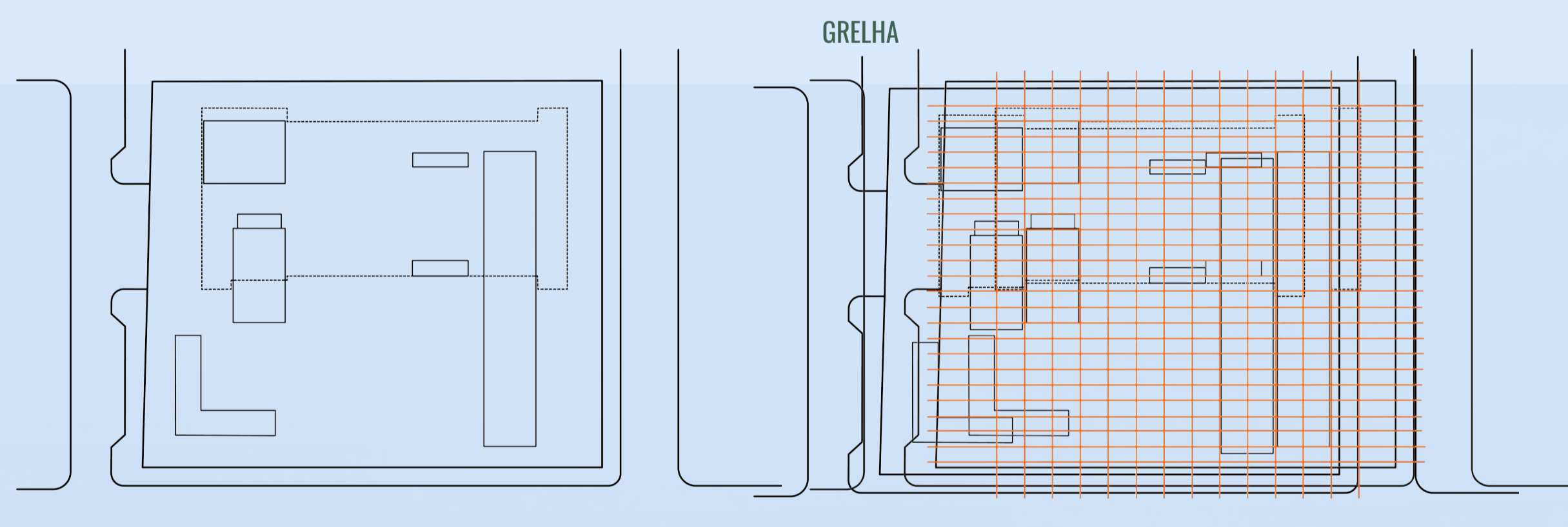
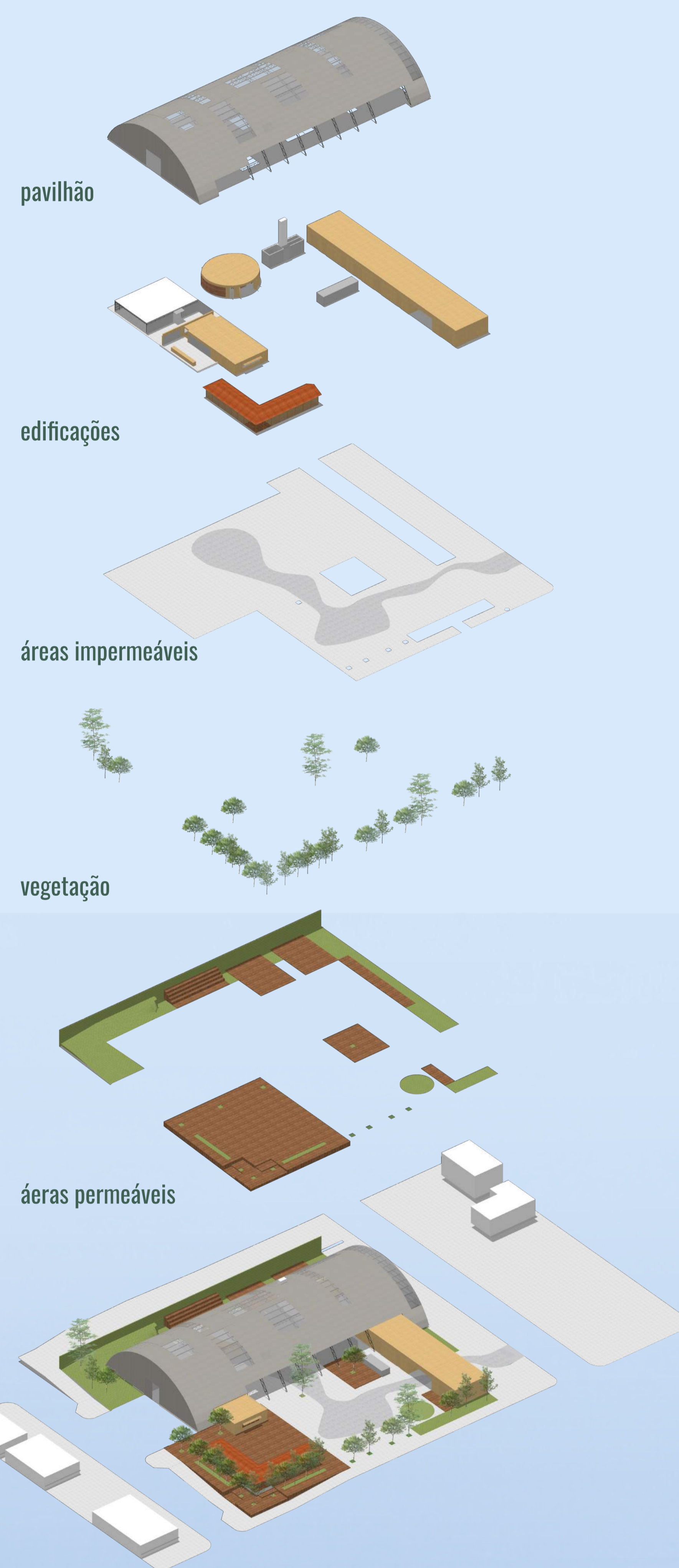
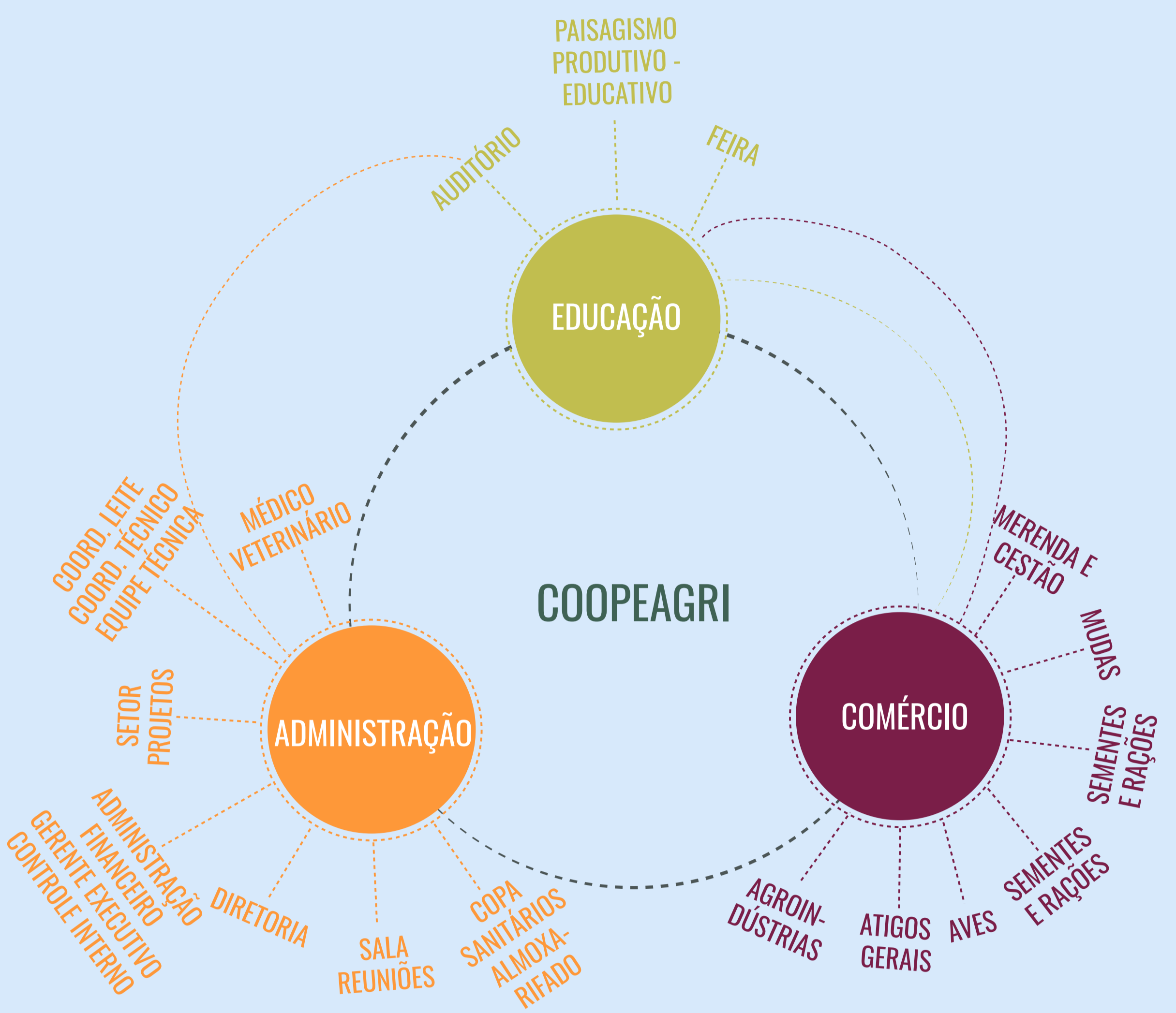
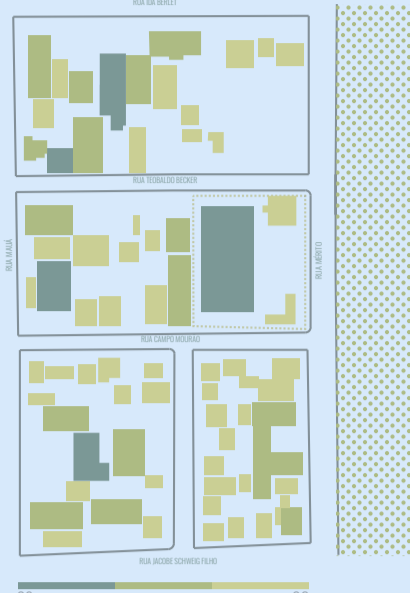
HIERARQUIA VIÁRIA E ACESSOS



USOS



ALTURA DAS EDIFICAÇÕES



Desde 2009, por meio da Lei nº 11.947/2009, que versa sobre o Programa Nacional de Alimentação Escolar (PNAE), a Agricultura Familiar passou a fornecer, no mínimo, 30% dos gêneros alimentícios servidos nas merendas da Rede Pública de Ensino.

A Coopeagri, atualmente, fornece alimentos da agricultura familiar para 21 escolas em sua cidade sede, e para escolas em mais três municípios próximos: Tapera, Selbach e 15 de Novembro. Ibirubá, inclusive, investe mais do que o valor obrigatório nas merendas dessa natureza, tendo até mesmo uma escola particular participando do sistema. Tais números demonstram a crescente importância que essa atividade vem tendo dentro da cooperativa e se traduz em mais uma oportunidade de crescimento. Por outro lado, vindo ao encontro dos valores da instituição, esta atividade, além de proporcionar uma nova oportunidade de comercialização dos produtos dos agricultores, potencialmente promove uma efetiva ação educativa.

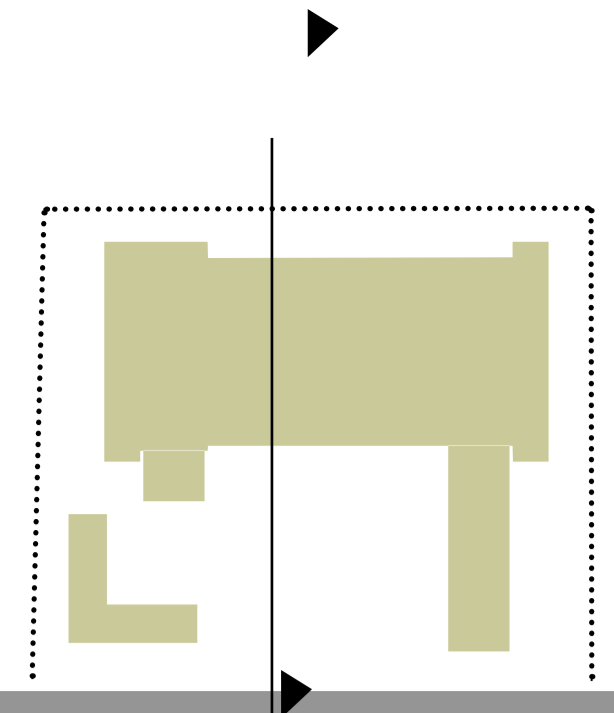
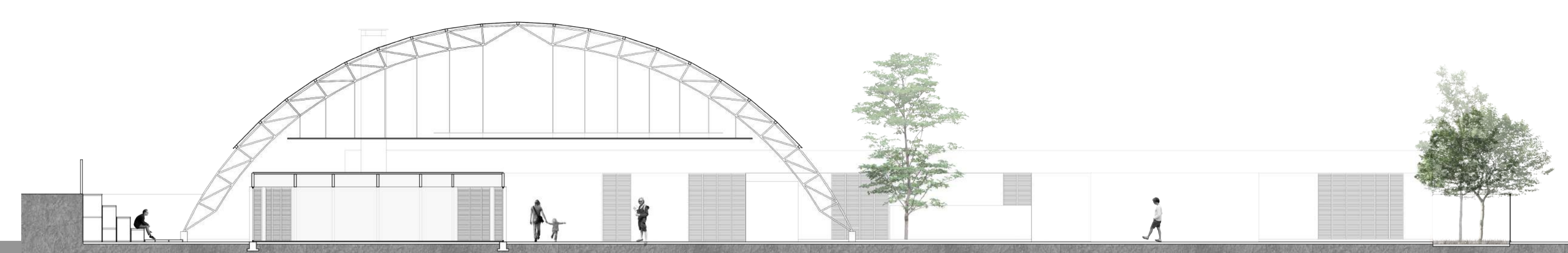




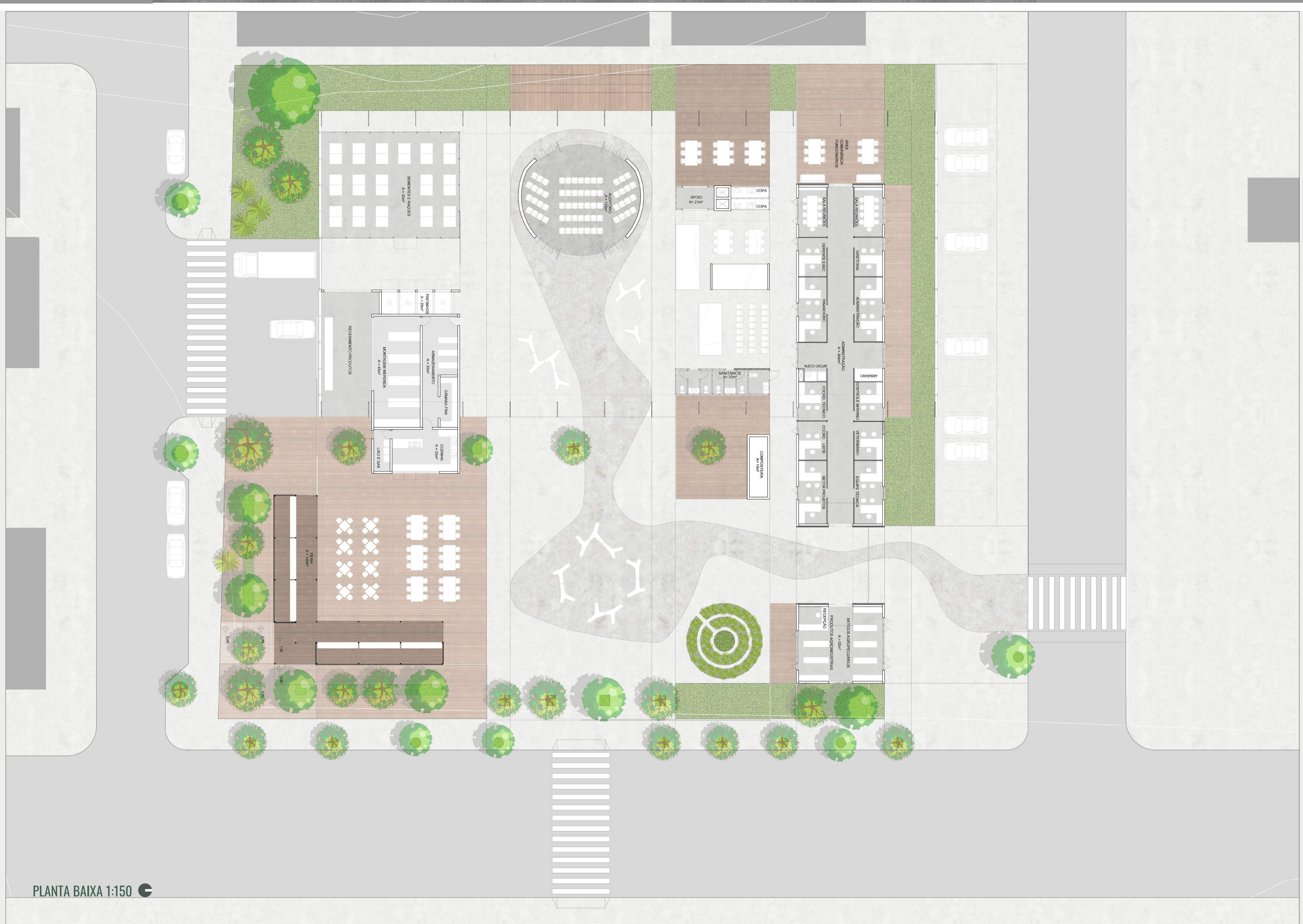
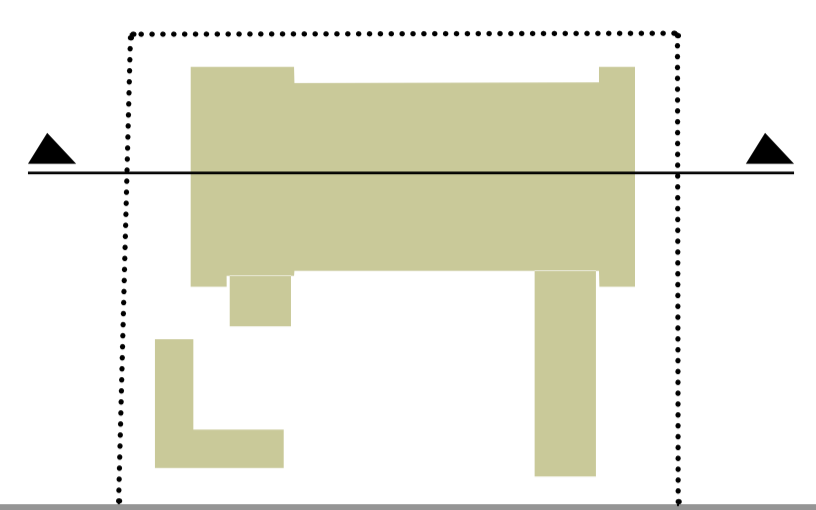
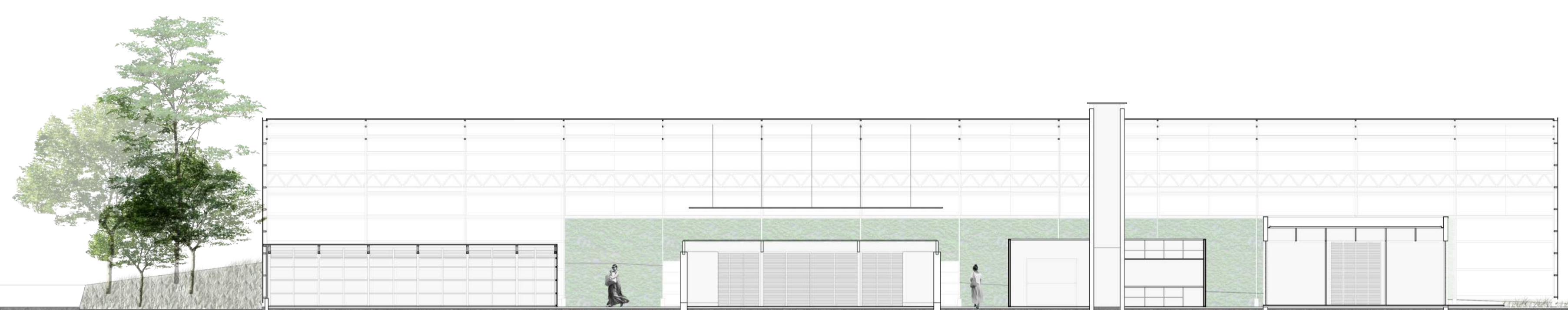
IMPLANTAÇÃO 1:150



CORTE TRANSVERSAL 1:150

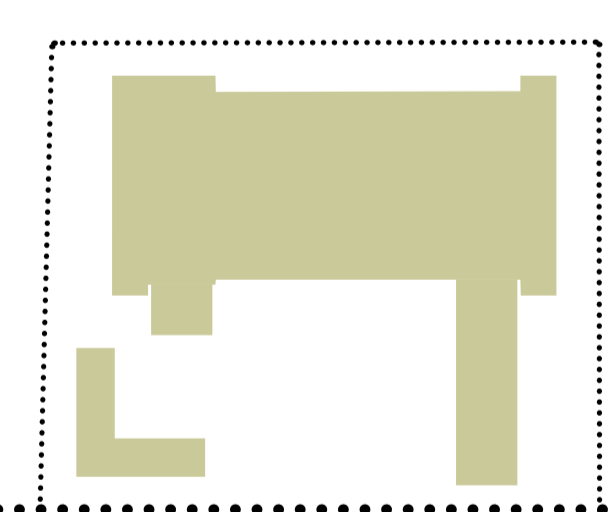
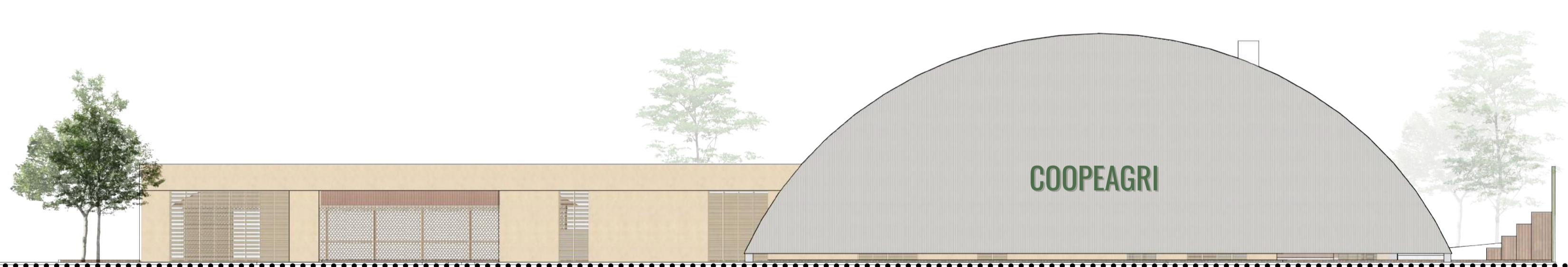


CORTE LONGITUDINAL 1:150

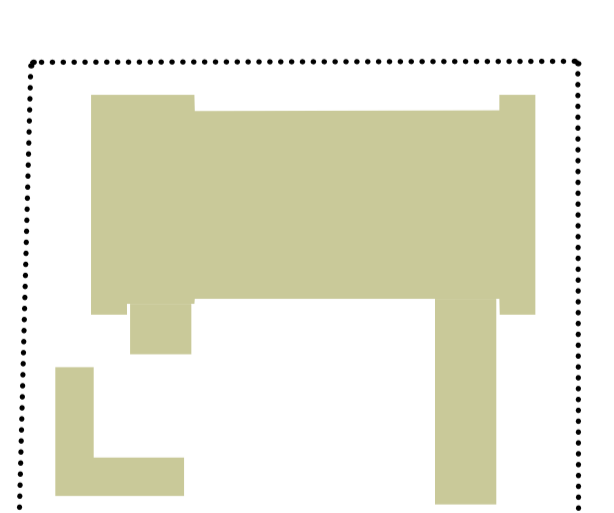
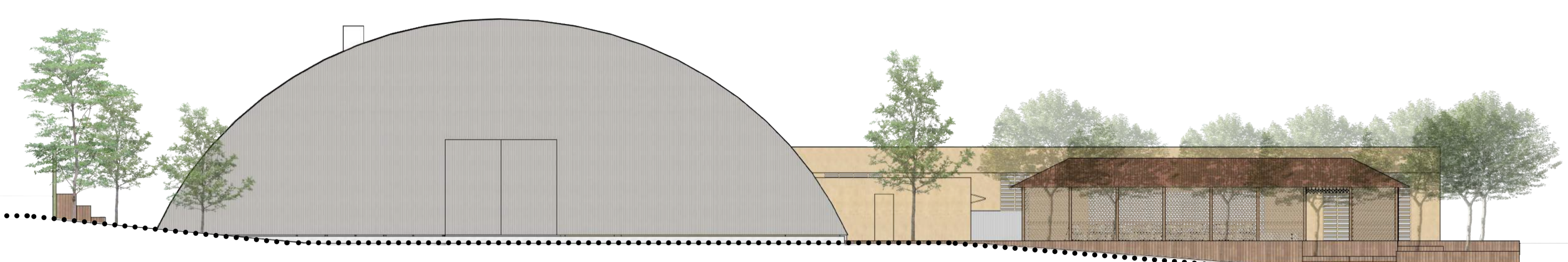


PLANTA BAIXA 1:150

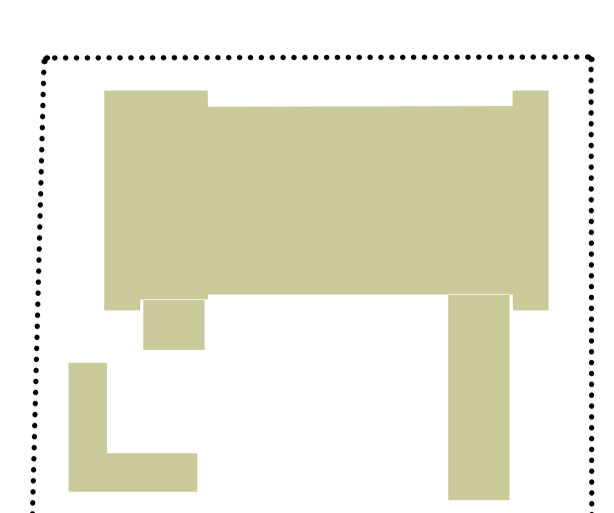
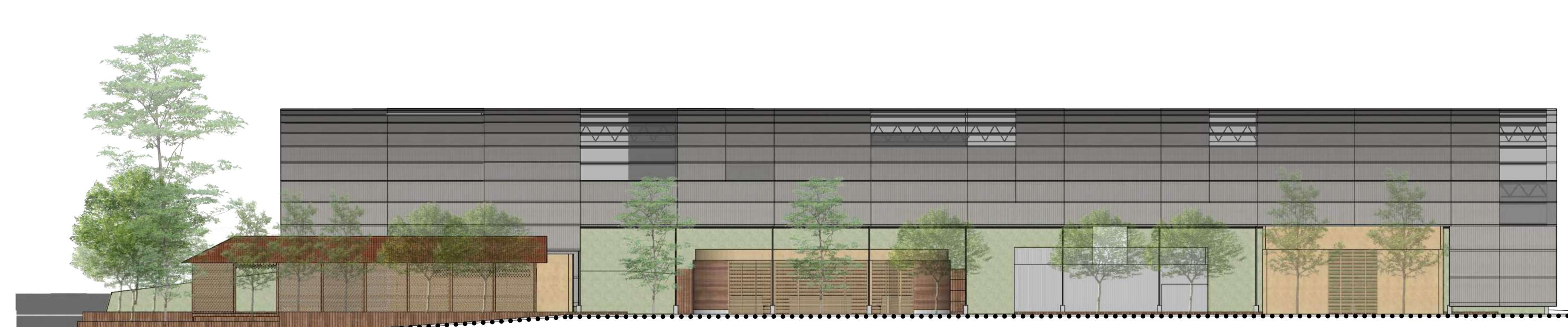
FACHADA NORTE 1:150



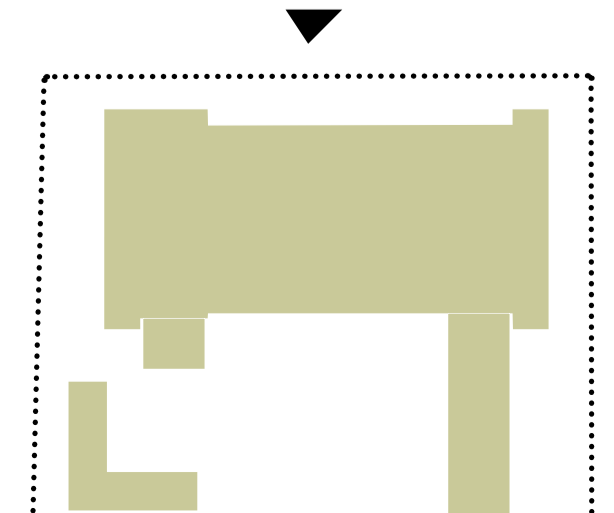
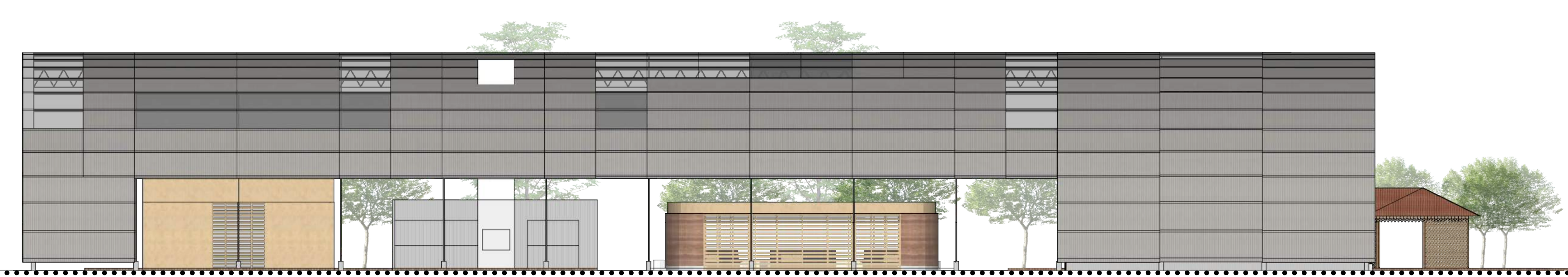
FACHADA SUL 1:150

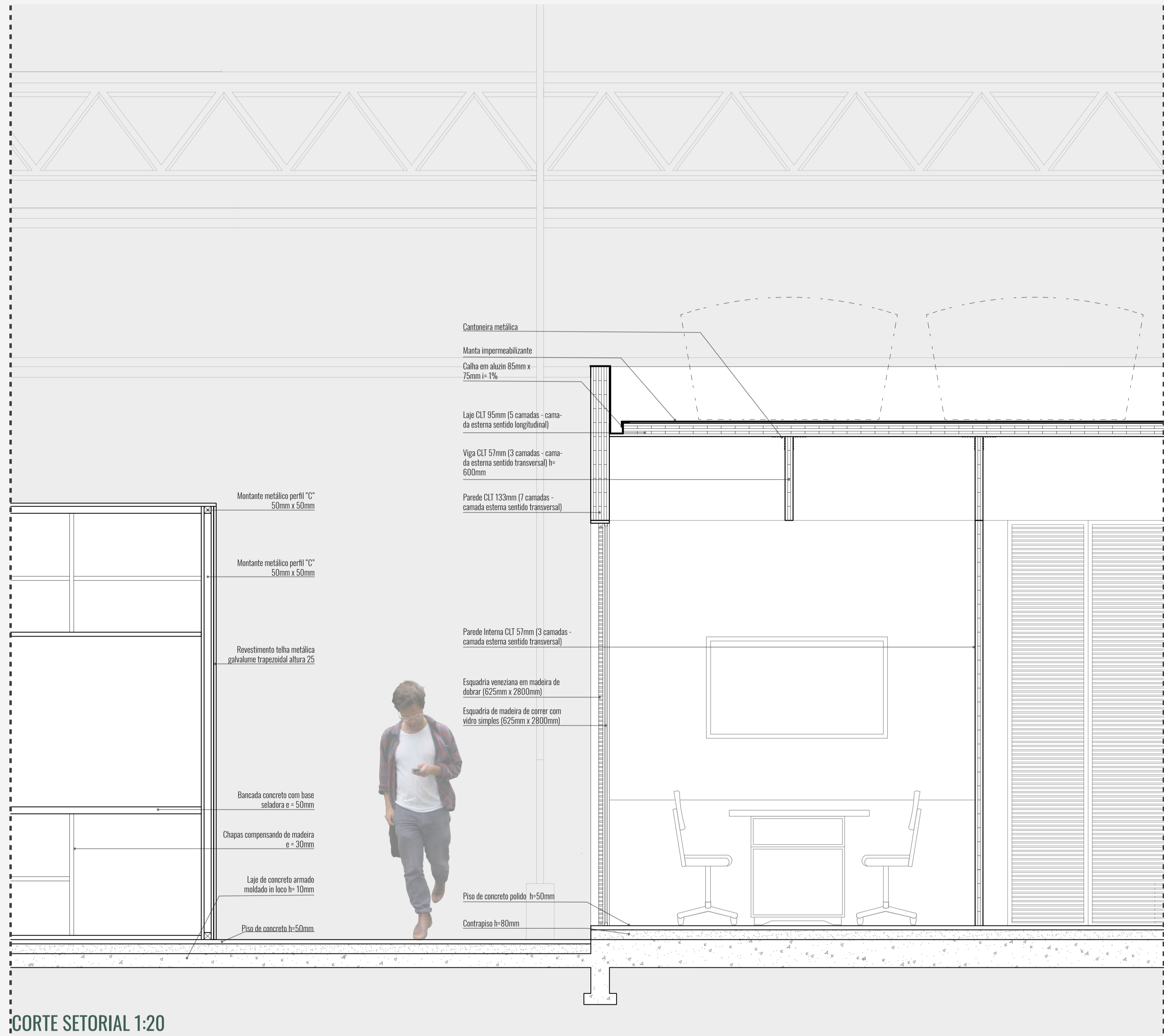
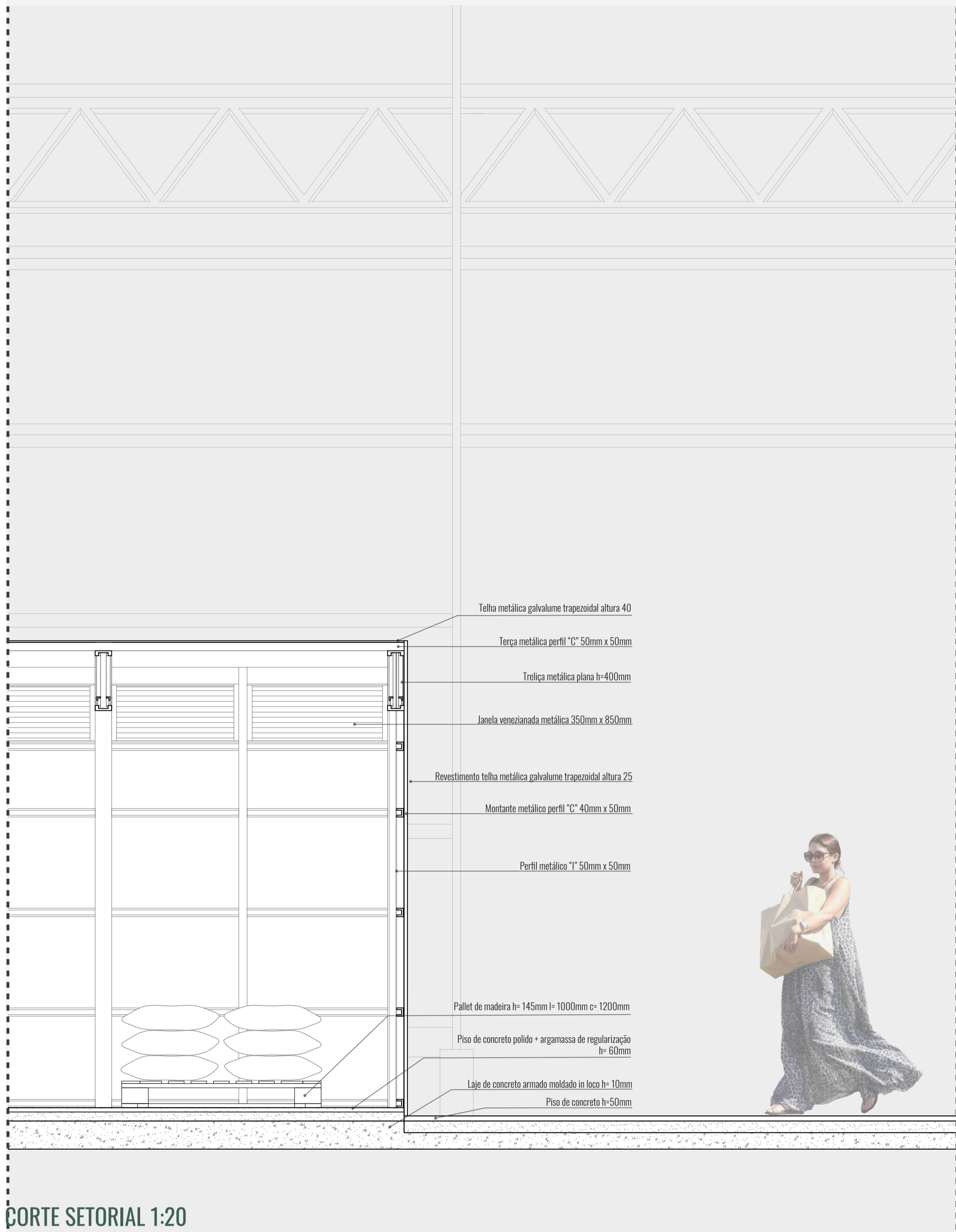


FACHADA LESTE 1:150



FACHADA OESTE 1:150





CORTE SETORIAL 1:20

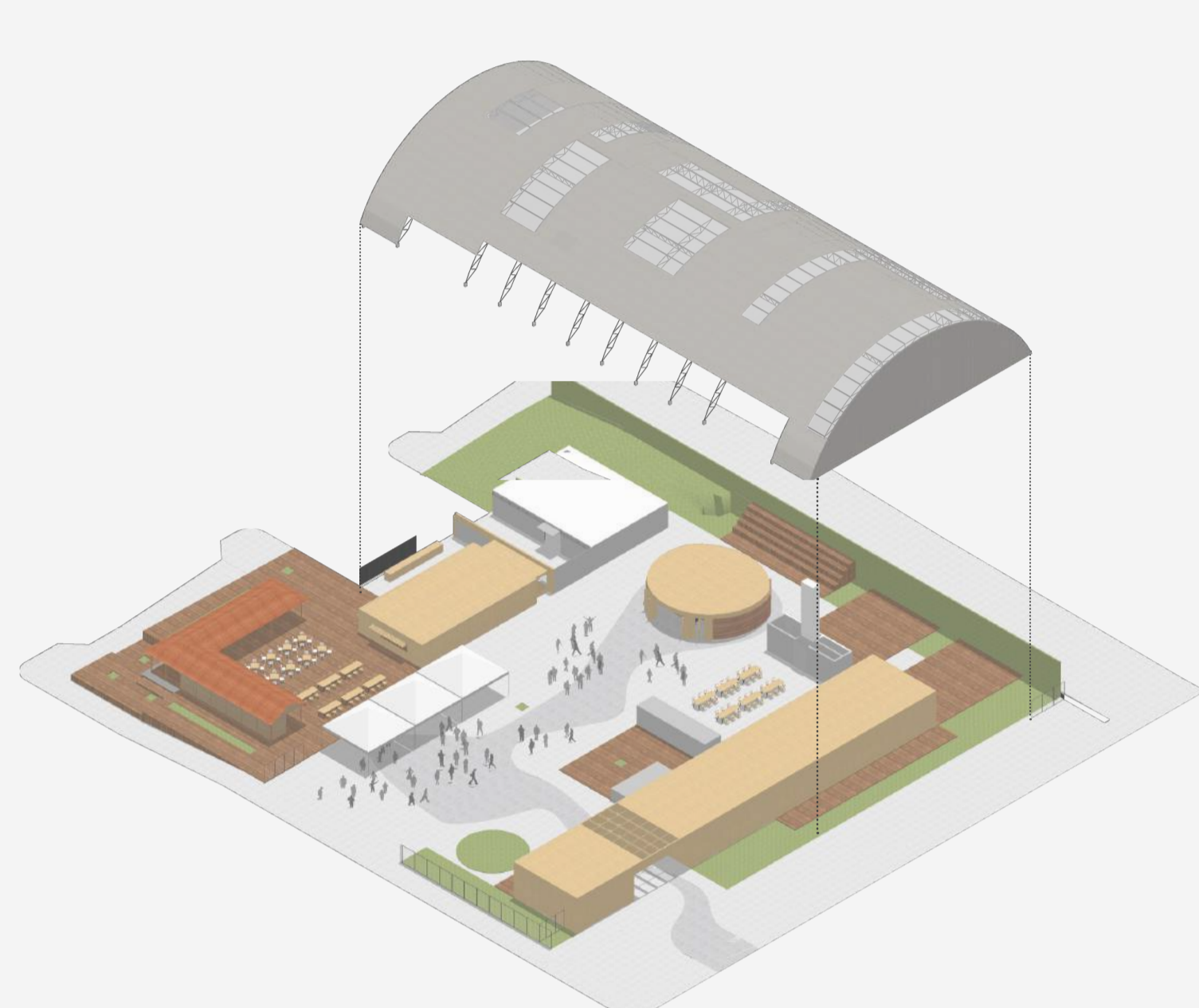
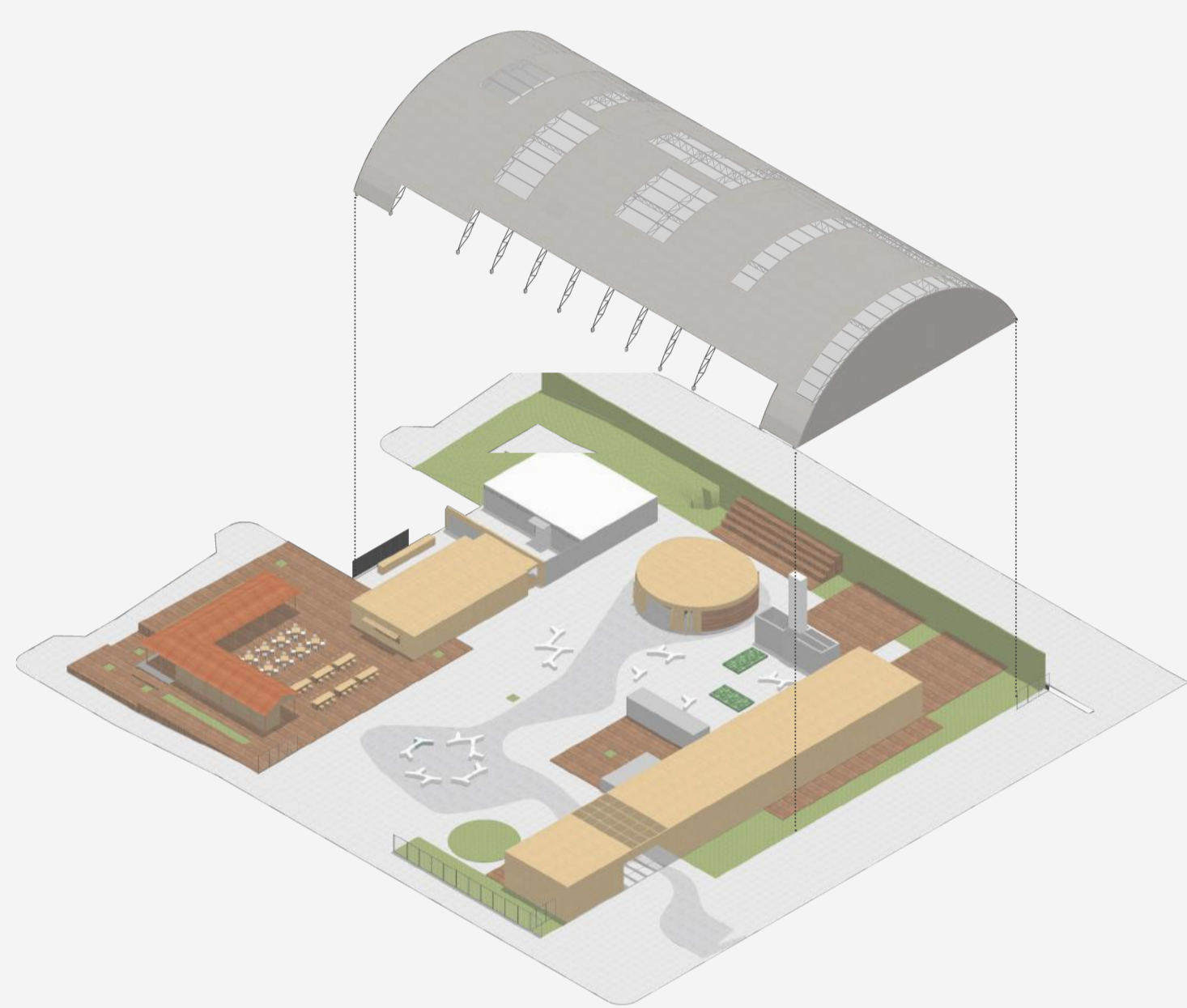
CORTE SETORIAL 1:20



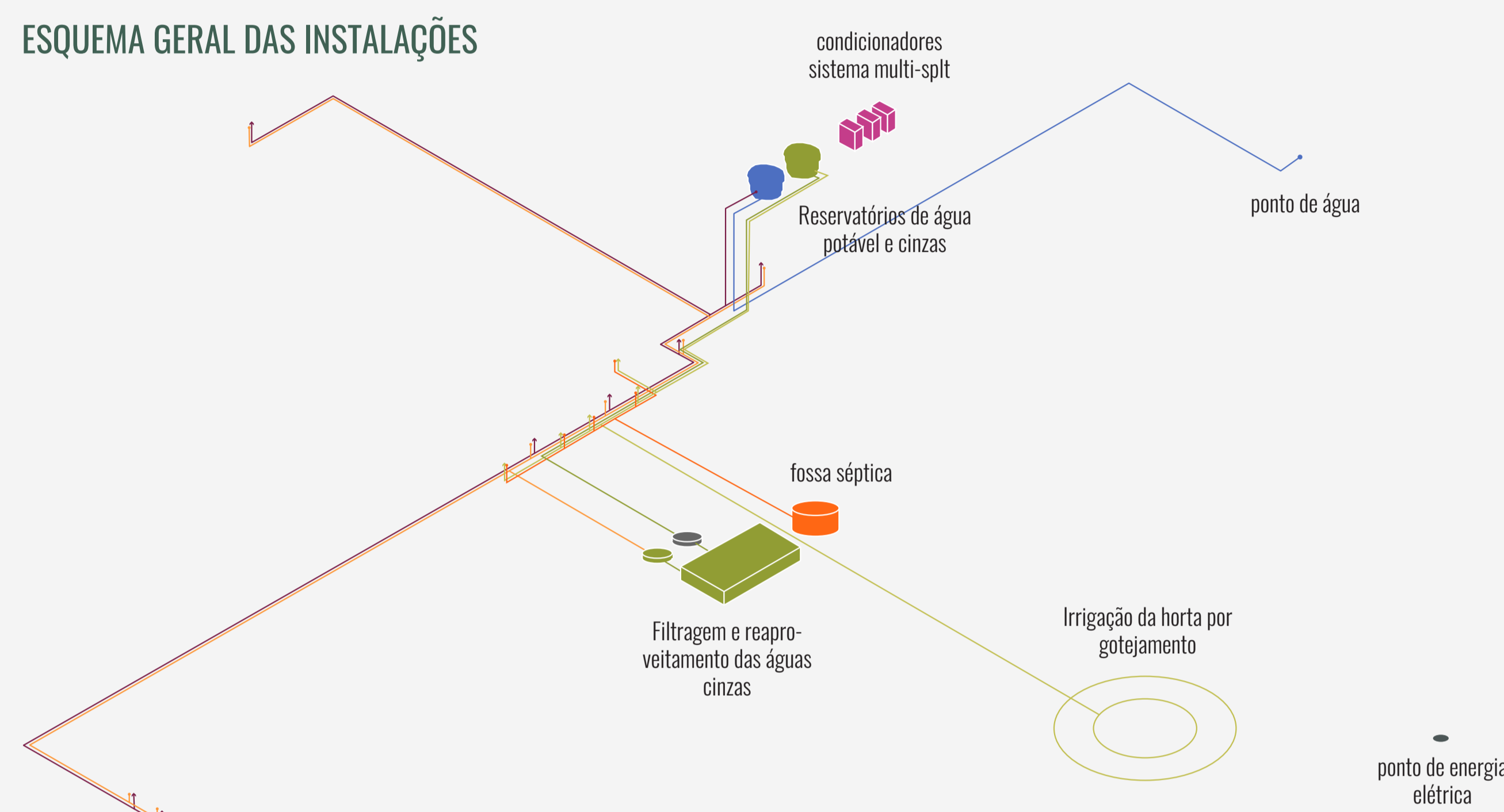


DIA SEM EVENTO: BANCOS E PALLETS COM MUDAS

DIA COM EVENTO: POSSIBILIDADE DE MONTAGEM DE TENDAS, FLEXIBILIDADE.



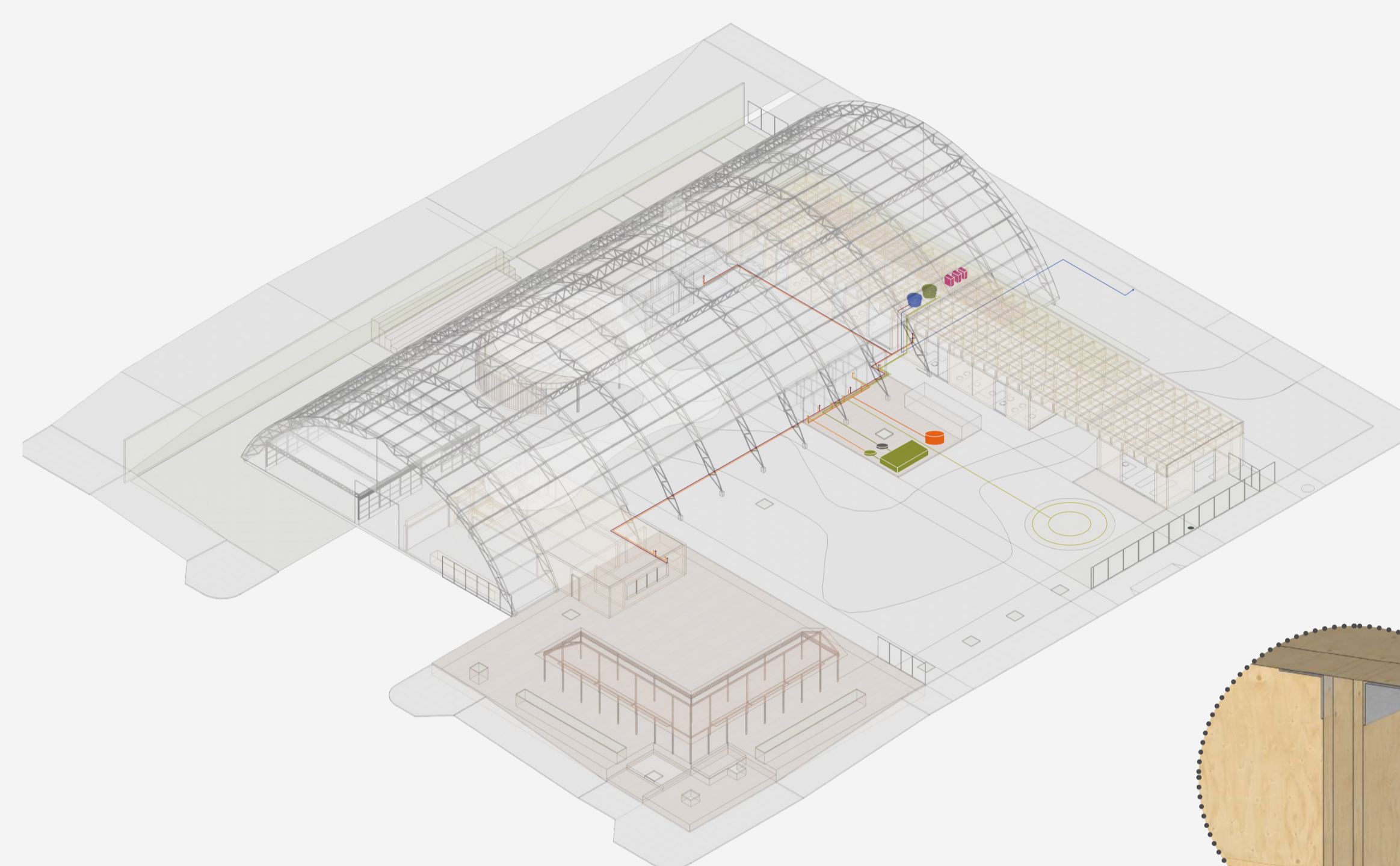
ESQUEMA GERAL DAS INSTALAÇÕES



Maiores aproveitamentos:  
 - Maior aproveitamento de luz solar  
 - Maior aproveitamento da água  
 - Maior aproveitamento do solo

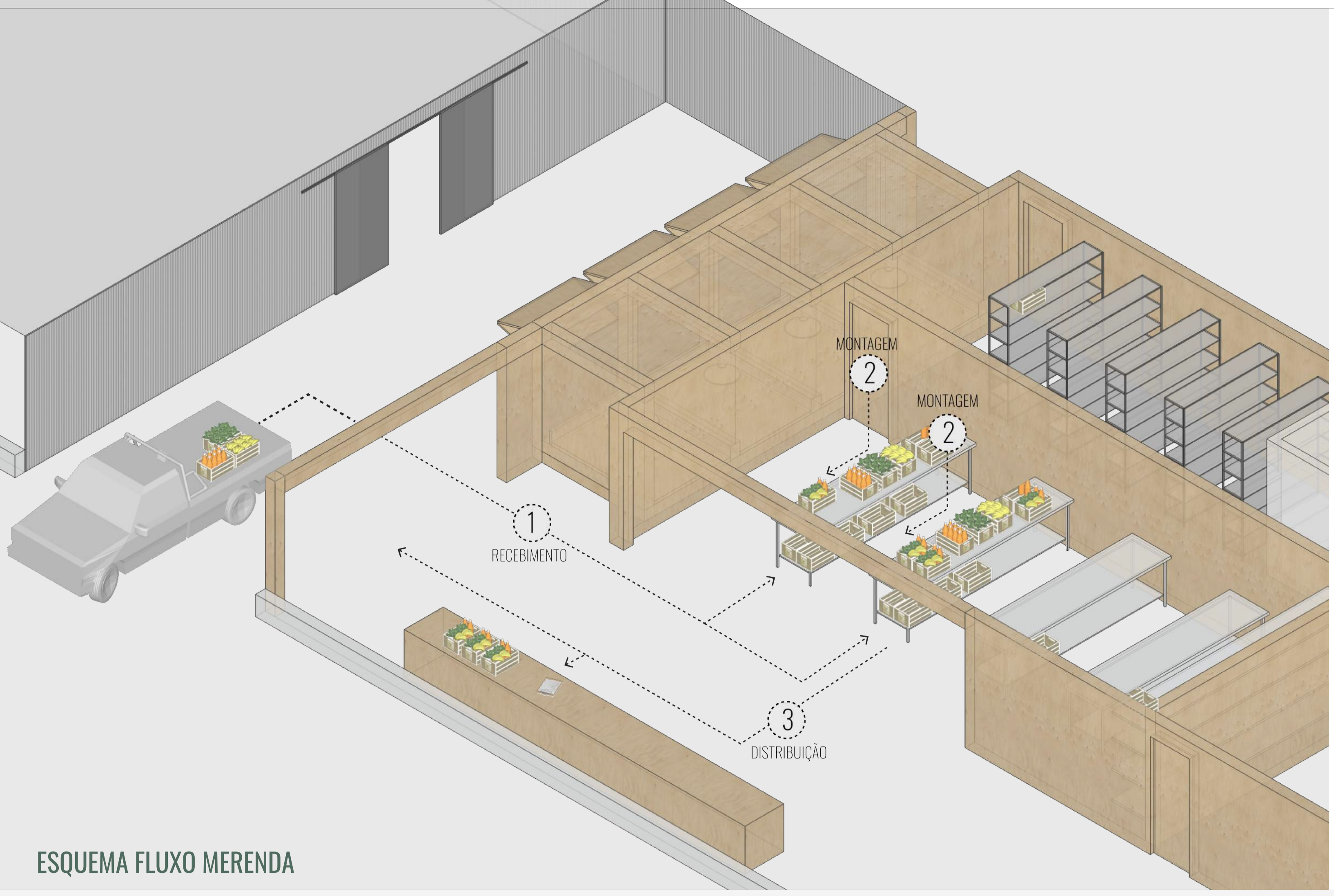


DETALHAMENTO PAISAGÍSTICO - HORTA REDONDA

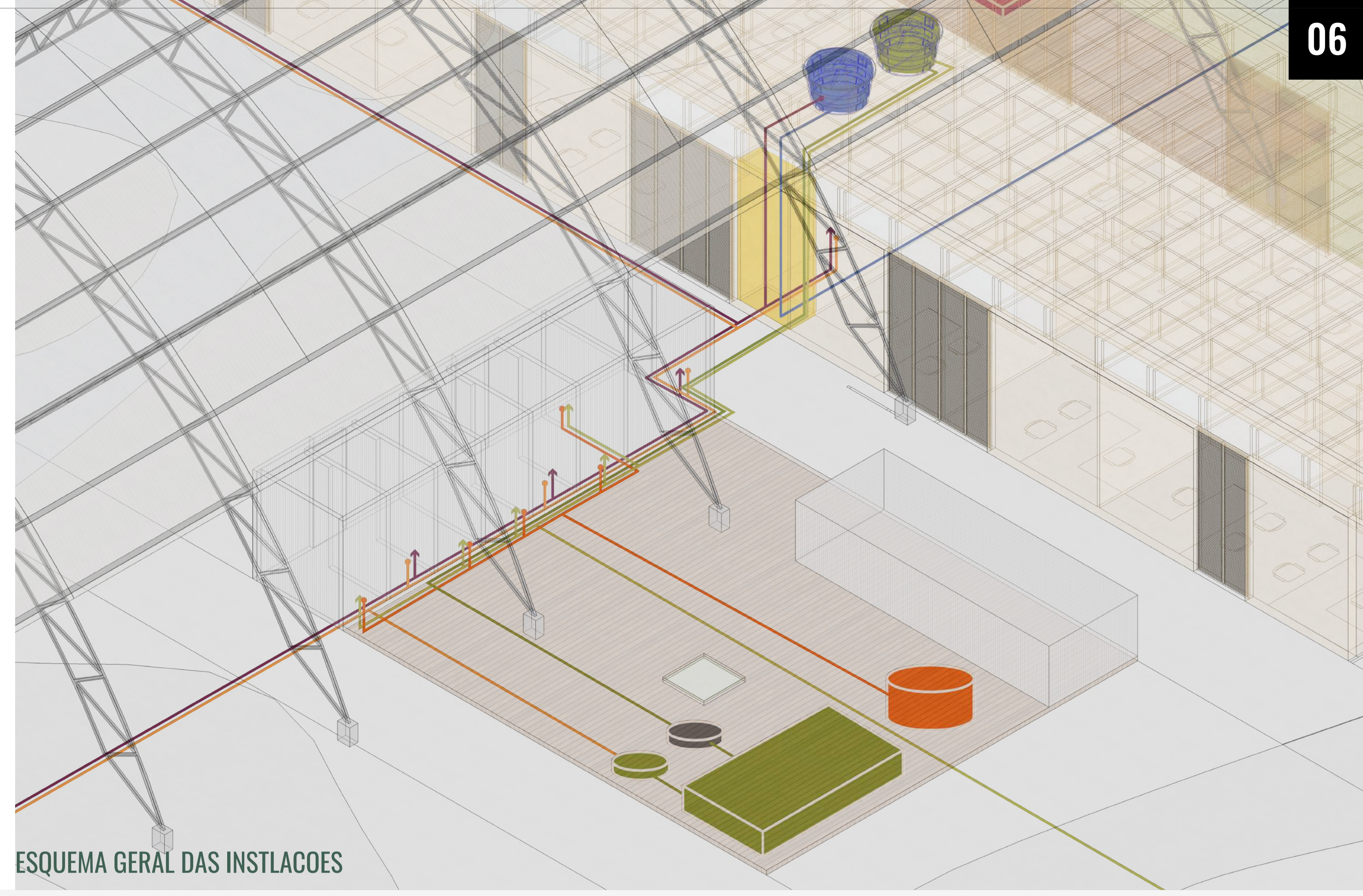


detalhe da viga dupla para abrigar instalações elétricas



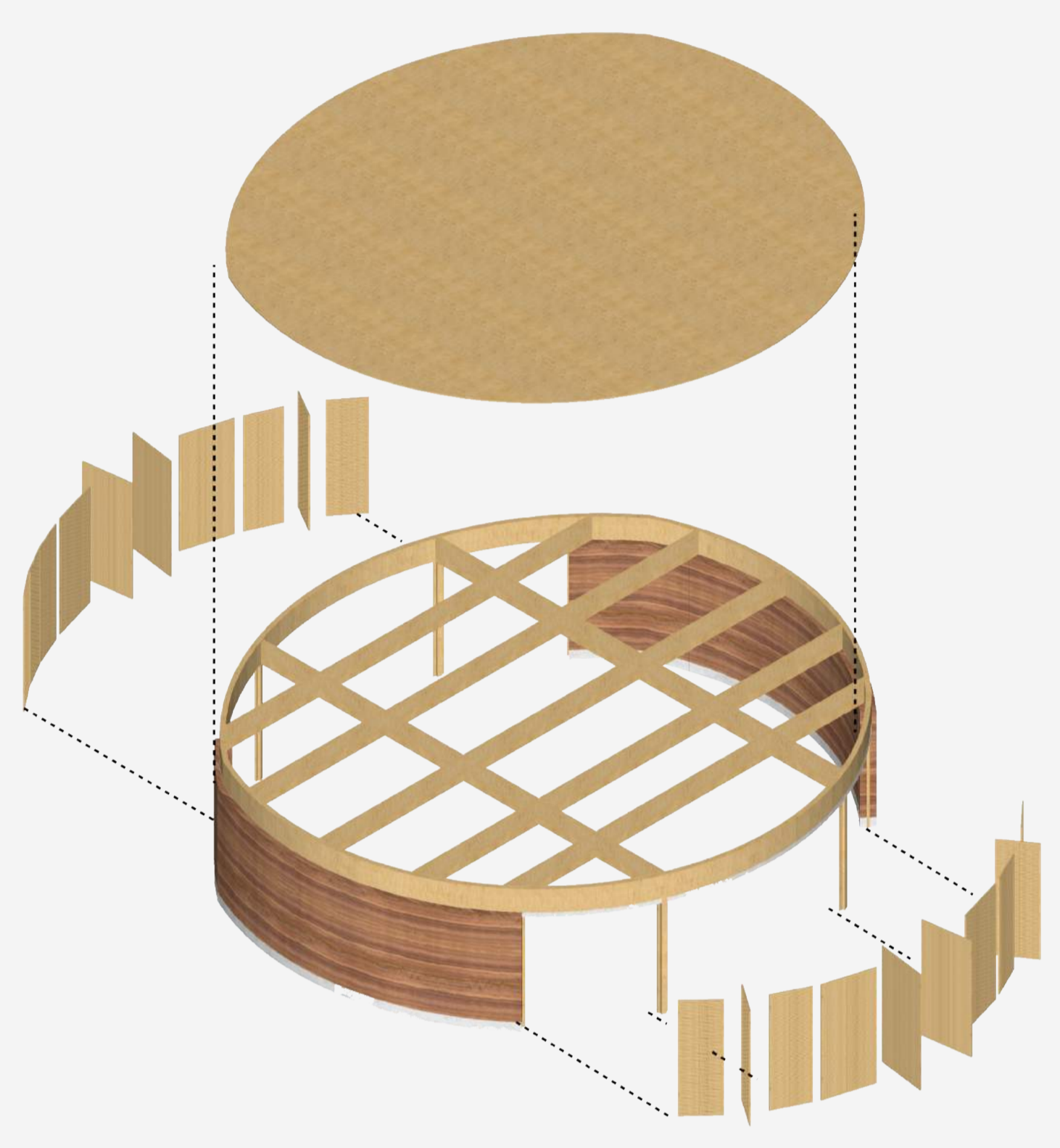


ESQUEMA FLUXO MERENDA



ESQUEMA GERAL DAS INSTALACOES

DETALHE MATERIALIDADE AUDITORIO



PLANTA FORRO

